

# ZyXEL Wireless LAN Solution

*In this fast moving world, rapid access to electronic information at the right place and the right time has become a key factor in achieving success both at home and in the office. ZyXEL's broadband Internet access and seamless wireless connectivity provides you with a treasure trove of information and knowledge, enriching your domestic life and helping you make quick and smart decisions in business.*



## **ZyXEL Prestige 316 Series & ZyAIR Series**

### **Broadband Sharing Gateway with Wireless LAN**



#### ***A Mobile Network for the Home, Office and Campus***

No longer are you tied to the desk in the office or classroom. Never again will you trip on network wires connected to your workstations. Now you can take your laptop and enjoy network access almost anywhere. Now you are truly mobile.

#### ***Unplugging the Wire***

The wireless LAN offers quick and easy access to traditional-wired Ethernet LAN in an office or home. The wireless LAN is also an extension of existing Ethernet LANs, which extends your network connection and provides the ultimate advantage of mobility.

#### ***Seamless Connectivity and Security***

ZyXEL's wireless solution allows you to share network resources and equipment, including access to email servers or the Internet, anytime and anywhere. ZyXEL's wireless product series allows you to communicate efficiently with quality, reliability, and security.

#### ***Flexible and Easy to Implement***

The wireless LAN brings down cabling costs and connects without sacrificing network performance. Gone are the days of pulling cables through walls and ceilings, installation has just become easier and more efficient.

#### ***Compatible and Scalable***

The ZyAIR wireless solution is based on the IEEE 802.11b standard and is IEEE 802.11 compatible. In addition to extending the network structure, you can add new access points as desired and the ZyAIR's seamless roaming capability will bring you the convenience of accessing the network almost anywhere.

**ZyXEL**  
TOTAL INTERNET ACCESS SOLUTION

# Prestige 316/Prestige 316E

More Than Just a Broadband Sharing Gateway. 11Mbps Wireless Access Point Built-in!

## Broadband Sharing Gateway With Wireless LAN



The Prestige 316 series, the Prestige 316 and the Prestige 316E, is ZyXEL's first Wireless LAN solution designed for home/office/campus customers. It brings users the high-speed wireless experience and makes their network more effective.

The Prestige 316 series combines advanced wireless technology with rich routing functions, giving you a broadband sharing gateway with an access point. This allows the user to maximize network efficiency while minimizing your network investment and maintenance costs.



### Features

#### Wireless LAN

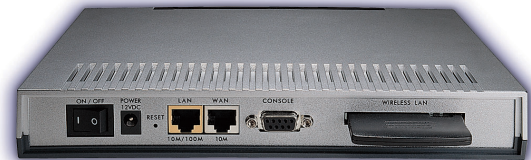
- Built-in 11Mbps Wireless Access Point
- Support Bridge mode and Infrastructure mode
- IEEE 802.11b compliant
- 1, 2, 5.5, 11Mbps data rate and auto fallback
- Wires Equivalent Privacy (WEP) wireless data encryption
- Seamless roaming within Wireless LAN infrastructure
- Optional External Antenna (the Prestige 316E only)

#### Broadband Sharing Gateway

- Broadband connection via DSL/Cable modem
- IP routing support
- Single User Account/Network Address Translation
- DHCP client and server for IP management
- PPP over Ethernet and PPTP client support for DSL connection
- IP Multicast
- IP Alias
- Support Dynamic Domain Name Server
- Call scheduling and budget management

#### Network Management

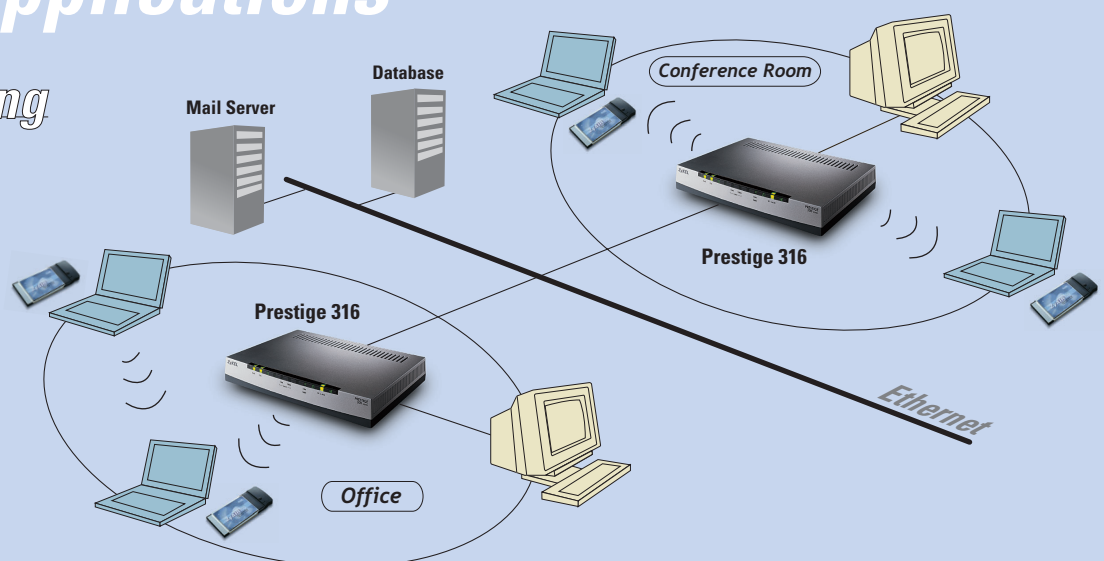
- Web based GUI configurator
- Telnet and local console management
- Built-in Command Line Interpreter (CLI)
- SNMP support for remote management
- Syslog for connection logs recording
- FTP/TFTP firmware upgrade, configuration backup/restore



## Wireless Applications

### Office Networking

- ▶ Presentation
- ▶ Real time database retrieving
- ▶ Printer sharing
- ▶ E-Mail receiving/sending
- ▶ Internet/Intranet access
- ▶ File sharing



## ZyAIR series

# Network Connection Anytime and Anywhere

The ZyAIR series complies with the IEEE 802.11b standard, which saves time and cabling costs, allowing users to create a high-speed wireless network environment.

### Series model

- ZyAIR 100: PCMCIA card
- ZyAIR PCI: PCI adaptor
- ZyAIR 110: Wireless USB

### Features

- Ad-Hoc mode for a peer-to-peer connection
- Infrastructure mode for communicating via the Prestige 316/the Prestige 316E
- Seamless roaming capability
- Wired Equivalent Privacy (WEP) data encryption

### Design your wireless network

- **Evaluate your wireless network**
  - Find out the number of notebooks and desktops, which require a wireless connection
  - Determine the number of Access Point required. Each Access Point can cover a 20~30-user indoor environment, a small office, or a department
- **Organize your wireless network**
  - For notebook: ZyAIR 100 / ZyAIR 110
  - For desktop: ZyAIR 100 / ZyAIR 110 / ZyAIR 100 + ZyAIR PCI adaptor
  - For home/small office: one Prestige 316 / Prestige 316E
  - For multiple offices: one Prestige 316 / Prestige 316E for every 20~30 connections



ZyAIR 100



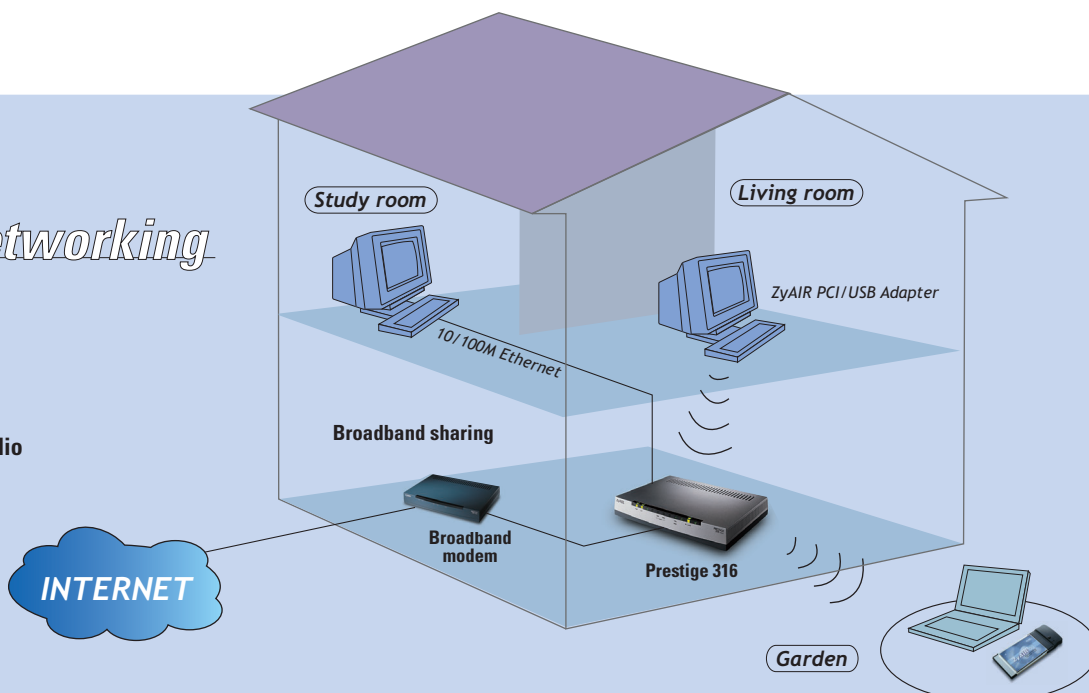
ZyAIR100 + PCI Adaptor



USB Adapter

## Home Networking

- ▶ Internet access
- ▶ Online Gaming
- ▶ File sharing
- ▶ Printer sharing
- ▶ Stream video / audio
- ▶ Web applications



# ZyXEL Wireless LAN Solution



## TOTAL INTERNET ACCESS SOLUTION

### Corporate Headquarters

#### ZyXEL Communications Co.

Tel: +886-3-578-3942

Fax: +886-3-578-2439

Email: sales@zyxel.com.tw

support@zyxel.com.tw

<http://www.zyxel.com>

<http://www.zyxel.com.tw>

### North America

#### ZyXEL Communications, Inc.

Tel: +1-714-632-0882

Fax: +1-714-632-0858

Email: sales@zyxel.com

support@zyxel.com

<http://www.zyxel.com>

### Scandinavia

#### ZyXEL Communications A/S

Tel: +45-3955-0700

Fax: +45-3955-0707

Email: sales@zyxel.dk

support@zyxel.dk

<http://www.zyxel.dk>

### Germany

#### ZyXEL Deutschland GmbH.

Tel: +49-2405-6909-0

Fax: +49-2405-6909-99

Email: sales@zyxel.de

support@zyxel.de

<http://www.zyxel.de>

### Austria

#### ZyXEL Communications Services GmbH.

Tel: +43-1-494-8677-0

Fax: +43-1-494-8678

Email: sales@zyxel.at

support@zyxel.at

<http://www.zyxel.at>

### Malaysia

#### ZyXEL Communications Co. (M) Sdn Bhd

Tel: 603-795-44-688

Fax: 603-795-34-407

Email: sales@zyxel.com.my

support@zyxel.com.my

<http://www.zyxel.com.my>

## The Prestige 316 / Prestige 316E Wireless Access Point

Technical Specifications

Product	Prestige 316	Prestige 316E
Wireless Specifications	<ul style="list-style-type: none"> <li>• IEEE 802.11b and IEEE 802.11 compliance</li> <li>• Direct Sequence Spread Spectrum</li> <li>• Wired Equivalent Privacy</li> <li>• Roaming per IEEE 802.11 specification</li> </ul>	
Data Rate	11M/5.5M/2M/1M, with auto rate selection	
Bridging	<ul style="list-style-type: none"> <li>• Transparent bridging between Ethernet and Wireless LAN</li> <li>• Transparent bridging between Access Points</li> </ul>	
Network architecture	<ul style="list-style-type: none"> <li>• Ad-Hoc mode</li> <li>• Infrastructure mode</li> <li>• Roaming</li> </ul>	<ul style="list-style-type: none"> <li>• Access Point to Access Point</li> <li>• Via Access Point</li> <li>• Between Access Points</li> </ul>
Antenna	Built-in diversity antenna	Built-in omni antenna with optional external antenna
Range / Coverage	11Mbps 395 feet / 120M	395 feet / 120M
(Open space)	5.5Mbps 525 feet / 160M	525 feet / 160M
	2Mbps 660 feet / 200M	660 feet / 200M
	1Mbps 890 feet / 270M	890 feet / 270M
Power Consumption	TX: <450mA RX: <350mA	
Output Power	12 +/-1 dBm	12 +/-1 dBm
Power Supply	12VDC	12VDC
Operating frequency/Channels	<ul style="list-style-type: none"> <li>• North America: Channel 1~11</li> <li>• Europe: Channel 1~13</li> <li>• France: Channel 10~13</li> <li>• Spain: Channel 12~13</li> <li>• Japan: Channel 1~14</li> </ul>	2.412~2.462 GHz 2.412~2.472 GHz 2.457~2.472 GHz 2.457~2.462 GHz 2.412~2.484 GHz
LED Indicator	<ul style="list-style-type: none"> <li>• Power</li> <li>• System</li> <li>• Power</li> <li>• LAN 10M/100Mbps</li> <li>• WAN 10M</li> <li>• W-LAN</li> </ul>	
Operating environment	<ul style="list-style-type: none"> <li>• Temperature: 0~40°C</li> <li>• Humidity: 5~90%</li> </ul>	

## ZyAIR series

Technical Specifications

Product	ZyAIR 100	ZyAIR PCI Adapter	ZyAIR 110
Interface type	PCMCIA card	PCI card bus adapter	USB
Specifications	<ul style="list-style-type: none"> <li>• IEEE 802.11b compliance</li> <li>• 11M, 5.5M, 2M, 1Mbps auto rate selection</li> <li>• WEP data encryption</li> <li>• Output power: 13dBm</li> <li>• Power: 3.3V/5V</li> </ul>	<ul style="list-style-type: none"> <li>• Support 95/97 PC card-16</li> <li>• Support 95/97 PC card-Cardbus</li> <li>• PC 97/98/99</li> <li>• PCI local bus specification 2.2</li> </ul>	<ul style="list-style-type: none"> <li>• USB specification 1.0</li> <li>• Operating voltage: 5V+/-10%</li> <li>• USB powered</li> </ul>
System requirements	PCMCIA slot, or Cardbus slot	PCI slot	USN interface
OS support	Windows 95/98/ME/NT/2000/CE	Windows 95/98/ME/NT/2000	Windows 98/ME/2000
Dimension	• 124mm(L)x54mm(W)x8.5mm(H)	• 140mm(L)x98mm(W)	126mm(L)x65mm(W)x33.5mm(H)
Operating environment	<ul style="list-style-type: none"> <li>• Temperature: 0~55°C</li> <li>• Humidity: 5~90 %</li> </ul>	<ul style="list-style-type: none"> <li>• Temperature: 0~70°C</li> <li>• Humidity: 5~80 %</li> </ul>	<ul style="list-style-type: none"> <li>• Temperature: 0~55°C</li> <li>• Humidity: 5~80 %</li> </ul>