



# SAP NetWeaver Developer Workplace SR1 (SPS06) – part 4 (NWDS SPS06 to SPS09)

## Before you start

Please check the document called **SAP NetWeaver Developer Workplace SR1 (SPS06) – part 4a (NWDS SPS06 to SPS09)** in order to see if any updated information is available to the information included in this document.

You will now update the SAP NetWeaver Developer Studio from support package stack **SPS06 to SPS09**. Use the information below along with the publicly released SAP document called **SAP NetWeaver 2004s Support Package Stack Guide – SPS09** paying close attention to the information contained in section 2.6.2 Updating Development Infrastructure -> Updating the Developer Workplace -> SAP NetWeaver Developer Studio and Local SAP NetWeaver Application Server Java with the later being explained in **SAP NetWeaver Developer Workplace SR1 (SPS06) – part 5 (JSPM SPS06 to SPS09)**.

## Updating the SAP NetWeaver Developer Studio from support package stack SPS06 to SPS09

IMPORTANT: Stop all SAP applications including the SAP NetWeaver Developer Studio, the local SAP J2EE engine and database, and any other SAP tools etc.

Download all the relevant **SAP NetWeaver 2004s** J2EE support packages from the SAP service market place. As your source stack enter 06 (02/2006) and as your target stack enter 09 (09/2006). Make use of the SAP Software Download Manager and add all the support packages you need to your Download basket in order to ensure that the JSPM can upgrade your system properly (see examples depicted below).

## A) Choose your Source Stack and Target Stack (Step 1 of 3):

SAP Software Distribution Center

SAP Installations & Upgrades

SAP Support Packages

Database Patches

Download Basket

Additional Download Info

You are here:

SAP Software Distribution Center

Download

Support Packages and Patches

Search for Support Packages and Patches

Entry by Application Group

My Company's Application Components

Archive for Support Packages and Patches

SAP Support Packages in Detail

SAP Support Package Stacks

Installations and Upgrades

Content

Database Patches (from other vendors)

SAP Cryptographic Software

SAP Connectors

Search for all Categories

Ordering SAP-Software

Download Basket

Copyright Privacy Imprint

Support Package Stacks

SAP NETWEAVER 2004S

Step 1 of 3 - Choose your Source and Target Stack

Please choose the Source Stack and then the Target Stack

Remark: The Source Stack is not mandatory so if you do not know it, leave the field empty

Target Stack09 (09/2006)Show Stack Information

Source Stack06 (02/2006)Show Stack Information

Restrict according to Usage

Usage Selection

☒ Development Infrastructure

☒ Application Server Java

Select All

☐ Application Server ABAP

☐ Mobile Infrastructure

Deselect All

☐ Process Integration (XI)

☒ Enterprise Portal

☐ Business Intelligence

Next Step

Additional Information

SAP NetWeaver 2004s - Support Package Stack Download

This is the download summary for SAP NetWeaver 2004s Support Package Stacks.  
General information about SAP Support Package Stacks can be found under Quick Link [/sp-stacks](#).

Please read the documentation specified for each SP Stack **before** you apply any Support Packages or Patches of the selected SP Stack.  
A link to the corresponding documentation of

SAP NetWeaver 2004s Support Package Stacks

## B) Choose Configuration (Step 2 of 3):

SAP Software Distribution Center	SAP Installations & Upgrades	SAP Support Packages	Database Patches	Download Basket	Additional Download Info						
<b>You are here:</b>											
<ul style="list-style-type: none"><li>SAP Software Distribution Center<ul style="list-style-type: none"><li>Download<ul style="list-style-type: none"><li>Support Packages and Patches<ul style="list-style-type: none"><li>Search for Support Packages and Patches</li><li><b>Entry by Application Group</b><ul style="list-style-type: none"><li>My Company's Application Components<ul style="list-style-type: none"><li>Archive for Support Packages and Patches</li></ul></li><li>SAP Support Packages in Detail</li><li>SAP Support Package Stacks</li><li>Installations and Upgrades</li><li>Content</li><li>Database Patches (from other vendors)</li><li>SAP Cryptographic Software</li><li>SAP Connectors</li></ul></li><li>Search for all Categories</li><li>Ordering SAP-Software</li><li>Download Basket</li></ul></li></ul></li></ul></li></ul>						<b>Support Package Stacks</b>					
<b>SAP NETWEAVER 2004S Support Package Stack 09 (09/2006)</b>											
<b>Step 2 of 3 - Choose Configuration</b>											
Please choose for each of the component versions listed below the configuration (DB-System, Operating-System, others) you need for your implemented solution. Please make sure that you always select: <ul style="list-style-type: none"><li>the OS-independent (#OS independent) and</li><li>the DB-independent installation (#Database independent)</li></ul> in addition to your specific DB and OS installation.											
<a href="#">Previous Step</a> <a href="#">Next Step</a>											
<b>ConfigTree</b>											
<ul style="list-style-type: none"><li>SAP IGS 7.00 for Application Server Java, Enterprise Portal, Development Infrastructure (From SP001 To SP005 or higher (Recommendation: SP005))</li><li>SAP KERNEL 7.00 32-BIT UNICODE for Application Server Java, Enterprise Portal, Development Infrastructure (From SP041 To SP075 or higher (Recommendation: SP075))</li><li>SAP KERNEL 7.00 64-BIT UNICODE for Application Server Java, Enterprise Portal, Development Infrastructure (From SP041 To SP075 or higher (Recommendation: SP075))</li><li>TREX 7.00 for Search and Classif. (TREX) (From SP006 To SP024 or higher (Recommendation: SP024))</li></ul>											
<a href="#">Previous Step</a> <a href="#">Next Step</a> <a href="#">Expand All</a> <a href="#">Collapse All</a>											

SAP Software Distribution Center	SAP Installations & Upgrades	SAP Support Packages	Database Patches	Download Basket	Additional Download Info						
<b>You are here:</b>											
<ul style="list-style-type: none"><li>SAP Software Distribution Center<ul style="list-style-type: none"><li>Download<ul style="list-style-type: none"><li>Support Packages and Patches<ul style="list-style-type: none"><li>Search for Support Packages and Patches</li><li><b>Entry by Application Group</b><ul style="list-style-type: none"><li>My Company's Application Components<ul style="list-style-type: none"><li>Archive for Support Packages and Patches</li></ul></li><li>SAP Support Packages in Detail</li><li>SAP Support Package Stacks</li><li>Installations and Upgrades</li><li>Content</li><li>Database Patches (from other vendors)</li><li>SAP Cryptographic Software</li><li>SAP Connectors</li></ul></li><li>Search for all Categories</li><li>Ordering SAP-Software</li><li>Download Basket</li></ul></li></ul></li></ul></li></ul>						<b>Support Package Stacks</b>					
<b>SAP NETWEAVER 2004S Support Package Stack 09 (09/2006)</b>											
<b>Step 2 of 3 - Choose Configuration</b>											
Please choose for each of the component versions listed below the configuration (DB-System, Operating-System, others) you need for your implemented solution. Please make sure that you always select: <ul style="list-style-type: none"><li>the OS-independent (#OS independent) and</li><li>the DB-independent installation (#Database independent)</li></ul> in addition to your specific DB and OS installation.											
<a href="#">Previous Step</a> <a href="#">Next Step</a>											
<b>ConfigTree</b>											
<ul style="list-style-type: none"><li><input checked="" type="checkbox"/> SAP IGS 7.00 for Application Server Java, Enterprise Portal, Development Infrastructure (From SP001 To SP005 or higher (Recommendation: SP005))<ul style="list-style-type: none"><li><input type="checkbox"/> AIX 64bit</li><li><input type="checkbox"/> HP-UX on IA64 64bit</li><li><input type="checkbox"/> HP-UX on PA-RISC 64bit</li><li><input type="checkbox"/> Linux on Power 64bit</li><li><input type="checkbox"/> Linux on IA32 32bit</li><li><input type="checkbox"/> Linux on IA64 64bit</li><li><input type="checkbox"/> Linux on x86_64 64bit</li><li><input checked="" type="checkbox"/> Windows Server on IA32 32bit</li><li><input type="checkbox"/> Windows Server on IA64 64bit</li><li><input type="checkbox"/> Windows Server on x64 64bit</li><li><input type="checkbox"/> OS400 V5R2M0</li><li><input type="checkbox"/> Linux on zSeries 64bit</li><li><input type="checkbox"/> Solaris on x64_64 64bit</li><li><input type="checkbox"/> Solaris on SPARC 64bit</li></ul></li><li><input checked="" type="checkbox"/> SAP KERNEL 7.00 32-BIT UNICODE for Application Server Java, Enterprise Portal, Development Infrastructure (From SP041 To SP075 or higher (Recommendation: SP075))<ul style="list-style-type: none"><li>Linux on IA32 32bit<ul style="list-style-type: none"><li><input type="checkbox"/> DB2 UDB</li><li><input type="checkbox"/> #Database independent</li><li><input type="checkbox"/> MaxDB</li><li><input type="checkbox"/> ORACLE</li></ul></li><li>Windows Server on IA32 32bit<ul style="list-style-type: none"><li><input type="checkbox"/> DB2/990</li><li><input type="checkbox"/> DB2/400</li><li><input type="checkbox"/> DB2 UDB</li><li><input checked="" type="checkbox"/> #Database independent</li><li><input checked="" type="checkbox"/> MaxDB</li><li><input type="checkbox"/> MS SQL SERVER</li><li><input type="checkbox"/> ORACLE</li></ul></li></ul></li><li>SAP KERNEL 7.00 64-BIT UNICODE for Application Server Java, Enterprise Portal, Development Infrastructure (From SP041 To SP075 or higher (Recommendation: SP075))</li><li>TREX 7.00 for Search and Classif. (TREX) (From SP006 To SP024 or higher (Recommendation: SP024))</li></ul>											
<a href="#">Previous Step</a> <a href="#">Next Step</a> <a href="#">Expand All</a> <a href="#">Collapse All</a>											

**C) Downloadable Support Packages (Step 3 of 3):**

You need to select all packages relevant to your installation, including the SAP tool called SAPCAR (see section **A.2.1 SAPCAR** in the **SAP NetWeaver 2004s Support Package Stack Guide – SPS09**).



Which support packages need to be selected, are described in the **SAP NetWeaver 2004s Support Package Stack Guide – SPS09** (the name of the guide at the time of this writing). In the future SPS09 will be followed by SPS10, 11, 12 etc).

You need to read through the stack guide, paying close attention to the information contained in section **2.6.2 Updating Development Infrastructure -> Updating the Developer Workplace -> SAP NetWeaver Developer Studio and Local SAP NetWeaver Application Server Java**.

It is also a good idea, to generate or create a support package stack XML file, as described in **SAP note 884537 - Benefit and use of the Support Package Stack XML**.

You need the SAP extraction file called SAPCAR -> SAPCAR\_0-10003694 in order to extract a file called JIDE09\_0-10003480.SAR (this file contains the upgrade files in order for you to upgrade from SPS06 to SPS09). See examples, depicted below.

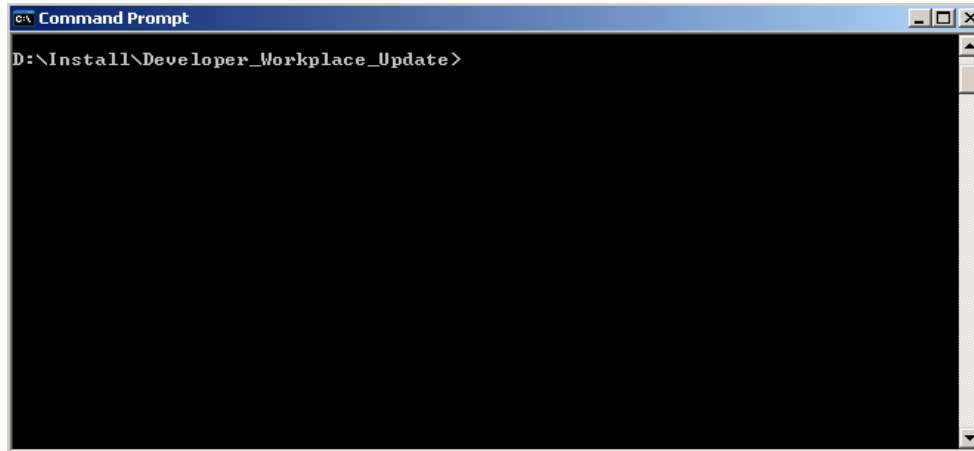
Name	Size	Type	Date Modified	Attributes
SDMKIT09_0-10003463.JAR	9,621 KB	Executable Jar File	9/13/2006 3:00 PM	A
ADSSAP09_0-10003001	1 KB	File	9/13/2006 2:43 PM	A
BASSETABLES09_0-10003462	1 KB	File	9/13/2006 3:04 PM	A
BIMMR09_0-10002782	1 KB	File	9/13/2006 2:54 PM	A
BIUDI09_0-10002781	1 KB	File	9/13/2006 3:00 PM	A
CAF09_0-10003464	1 KB	File	9/13/2006 2:56 PM	A
CAFUM09_0-10003478	1 KB	File	9/13/2006 3:02 PM	A
CAFUM09_0-10003472	1 KB	File	9/13/2006 3:03 PM	A
CORETOOLS09_0-10003456	1 KB	File	9/13/2006 2:48 PM	A
DICBS09_0-10003500	1 KB	File	9/13/2006 3:01 PM	A
DICMS09_0-10003499	1 KB	File	9/13/2006 3:01 PM	A
DIDTR09_0-10003501	1 KB	File	9/13/2006 2:59 PM	A
EPBC09_0-10003473	1 KB	File	9/13/2006 3:02 PM	A
EPBC09_0-10003489	1 KB	File	9/13/2006 3:00 PM	A
EPBUILD09_0-10003786	1 KB	File	9/13/2006 3:03 PM	A
EPPSERV09_0-10003474	1 KB	File	9/13/2006 2:54 PM	A
EPWDC09_0-10003557	1 KB	File	9/13/2006 3:01 PM	A
IGSEXE_5-10003070	2 KB	File	9/13/2006 3:00 PM	A
JIDE09_0-10003480	1 KB	File	9/13/2006 3:11 PM	A
JLOGVIEW09_0-10003465	1 KB	File	9/13/2006 2:58 PM	A
JSPM09_0-10003470	1 KB	File	9/13/2006 2:57 PM	A
KMCBC09_0-10003491	1 KB	File	9/13/2006 3:01 PM	A
KMCCM09_0-10003492	1 KB	File	9/13/2006 2:56 PM	A
KMCCOLL09_0-10003493	1 KB	File	9/13/2006 2:59 PM	A
KMKWJIKS09_0-10003021	1 KB	File	9/13/2006 3:03 PM	A
LMPORAL09_0-10003487	1 KB	File	9/13/2006 3:05 PM	A
LMTTOOLS09_0-10003486	1 KB	File	9/13/2006 2:52 PM	A
NETPDK09_0-10004046	1 KB	File	9/13/2006 3:02 PM	A
RTC09_0-10003494	1 KB	File	9/13/2006 3:03 PM	A
RTCSTREAM09_0-10003488	1 KB	File	9/13/2006 3:03 PM	A
SAPBUILD09_0-10003479	1 KB	File	9/13/2006 2:57 PM	A
SAPCAR_0-10003694	2,672 KB	File	9/13/2006 1:44 PM	A
SAPEU09_0-10003026	1 KB	File	9/13/2006 2:50 PM	A
SAPEXE_75-20000972	58 KB	File	9/13/2006 2:46 PM	A

Name	Size	Type	Date Modified	Attributes
SAPJTECHS09_0-10003467	1 KB	File	9/13/2006 2:49 PM	A
SDMKIT09_0-10003463	1 KB	File	9/13/2006 3:00 PM	A
UMEADMIN09_0-10003471	1 KB	File	9/13/2006 3:02 PM	A
UWLJWF09_0-10003490	1 KB	File	9/13/2006 2:59 PM	A
VCBASE09_0-10003602	1 KB	File	9/13/2006 3:02 PM	A
VCFLX09_0-10003616	1 KB	File	9/13/2006 2:58 PM	A
VCFRAMEWORK09_0-10003624	1 KB	File	9/13/2006 3:02 PM	A
VCKITGP09_0-10003617	1 KB	File	9/13/2006 3:05 PM	A
VCKITXX09_0-10003615	1 KB	File	9/13/2006 3:04 PM	A
WDEXTENSION09_0-10003618	1 KB	File	9/13/2006 3:02 PM	A
IGSEXE_5-10003070.SAR	9,942 KB	SAR File	9/13/2006 3:00 PM	A
JIDE09_0-10003480.SAR	474,812 KB	SAR File	9/13/2006 3:11 PM	A
SAPEXE_75-20000972.SAR	157,251 KB	SAR File	9/13/2006 2:46 PM	A
SAPEXEDB_75-10003442.SAR	5,518 KB	SAR File	9/13/2006 3:01 PM	A
SAPEXEDB_75-10003443.SAR	6,502 KB	SAR File	9/13/2006 3:01 PM	A
ADSSAP09_0-10003001.SCA	375,485 KB	SCA File	9/13/2006 2:43 PM	A
BASSETABLES09_0-10003462....	27 KB	SCA File	9/13/2006 3:04 PM	A
BIMMR09_0-10002782.SCA	38,453 KB	SCA File	9/13/2006 2:54 PM	A
BIUDI09_0-10002781.SCA	10,081 KB	SCA File	9/13/2006 3:00 PM	A
CAF09_0-10003464.SCA	37,170 KB	SCA File	9/13/2006 2:56 PM	A
CAFUM09_0-10003478.SCA	1,913 KB	SCA File	9/13/2006 3:02 PM	A
CAFUM09_0-10003472.SCA	805 KB	SCA File	9/13/2006 3:03 PM	A
CORETOOLS09_0-10003456....	77,468 KB	SCA File	9/13/2006 2:48 PM	A
DICBS09_0-10003500.SCA	9,032 KB	SCA File	9/13/2006 3:01 PM	A
DICMS09_0-10003499.SCA	8,314 KB	SCA File	9/13/2006 3:01 PM	A
DIDTR09_0-10003501.SCA	11,035 KB	SCA File	9/13/2006 2:59 PM	A

Copy the above two files (SAPCAR\_0-10003694 and JIDE09\_0-10003480.SAR) into a separate directory called, for example, D:\Install\Developer\_Workplace\_Update. You can rename SAPCAR\_0-10003694 to SAPCAR.EXE.

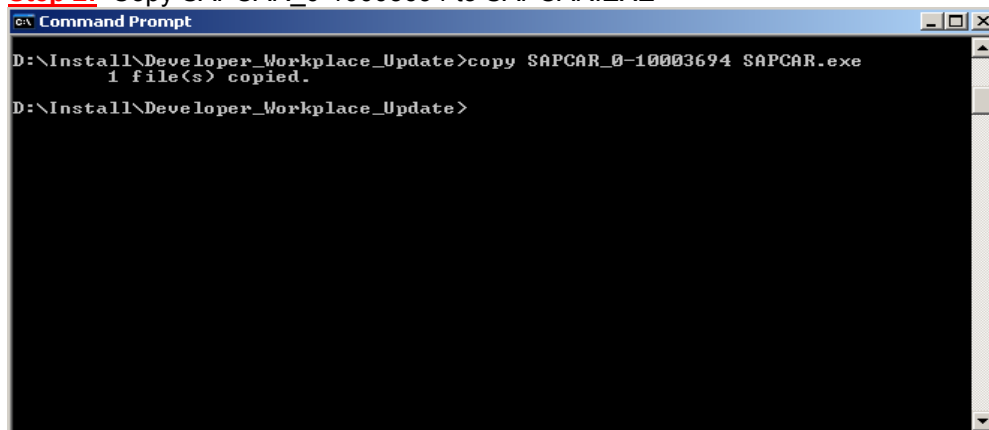
Now follow the instructions below.

**Step 1:** Change to the directory where SAPCAR\_0-10003694 and JIDE09\_0-10003480.SAR are located.



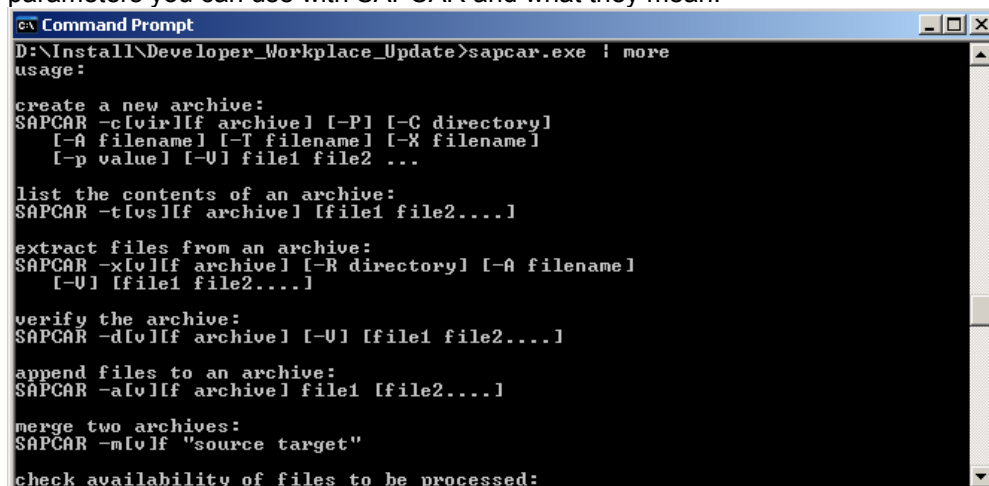
```
Command Prompt
D:\Install\Developer_Workplace_Update>
```

**Step 2:** Copy SAPCAR\_0-10003694 to SAPCAR.EXE



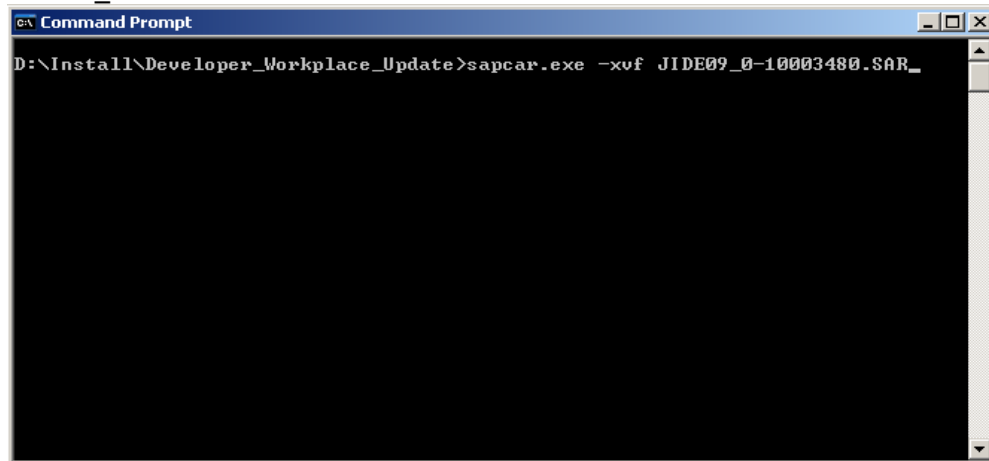
```
Command Prompt
D:\Install\Developer_Workplace_Update>copy SAPCAR_0-10003694 SAPCAR.exe
1 file(s) copied.
D:\Install\Developer_Workplace_Update>
```

**Step 3:** By typing SAPCAR.EXE | more at the command prompt, you receive a list of parameters you can use with SAPCAR and what they mean.

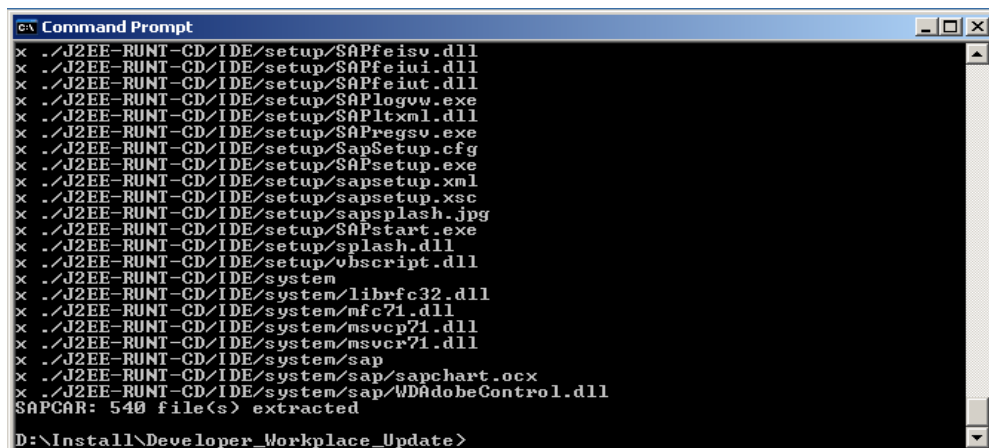


```
Command Prompt
D:\Install\Developer_Workplace_Update>sapcar.exe | more
usage:
create a new archive:
SAPCAR -c[vlr]lf archive] [-P] [-C directory]
[-A filename] [-T filename] [-X filename]
[-p value] [-U] file1 file2 ...
list the contents of an archive:
SAPCAR -t[vs]lf archive] [file1 file2....]
extract files from an archive:
SAPCAR -x[vl]lf archive] [-R directory] [-A filename]
[-U] [file1 file2....]
verify the archive:
SAPCAR -d[vl]lf archive] [-U] [file1 file2....]
append files to an archive:
SAPCAR -a[vl]lf archive] file1 [file2....]
merge two archives:
SAPCAR -m[vl]f "source target"
check availability of files to be processed:
```

**Step 4:** Extract the file JIDE09\_0-10003480.SAR with the command SAPCAR.exe -xvf JIDE09\_0-10003480.SAR

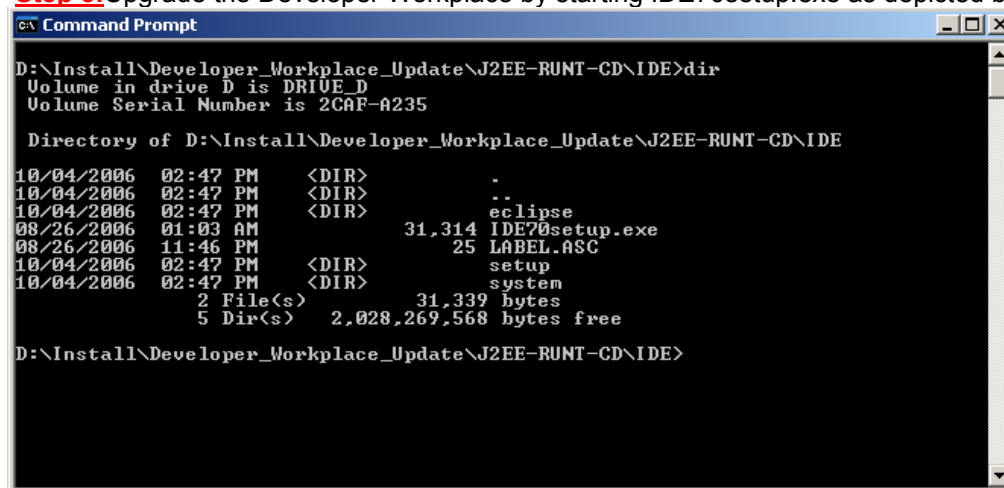


```
CA\ Command Prompt
D:\Install\Developer_Workplace_Update>sapcar.exe -xvf JIDE09_0-10003480.SAR_
```



```
CA\ Command Prompt
x ./J2EE-RUNT-CD\IDE\setup\SAPfeisu.dll
x ./J2EE-RUNT-CD\IDE\setup\SAPfeiu.dll
x ./J2EE-RUNT-CD\IDE\setup\SAPfeiu.dll
x ./J2EE-RUNT-CD\IDE\setup\SAPlogvw.exe
x ./J2EE-RUNT-CD\IDE\setup\SAPltxml.dll
x ./J2EE-RUNT-CD\IDE\setup\SAPregsv.exe
x ./J2EE-RUNT-CD\IDE\setup\SapSetup.cfg
x ./J2EE-RUNT-CD\IDE\setup\SAPsetup.exe
x ./J2EE-RUNT-CD\IDE\setup\sapsetup.xml
x ./J2EE-RUNT-CD\IDE\setup\sapsetup.xsc
x ./J2EE-RUNT-CD\IDE\setup\sapsplash.jpg
x ./J2EE-RUNT-CD\IDE\setup\SAPstart.exe
x ./J2EE-RUNT-CD\IDE\setup\splash.dll
x ./J2EE-RUNT-CD\IDE\setup\vbscript.dll
x ./J2EE-RUNT-CD\IDE\system
x ./J2EE-RUNT-CD\IDE\system\librfc32.dll
x ./J2EE-RUNT-CD\IDE\system\mfc71.dll
x ./J2EE-RUNT-CD\IDE\system\msvcp71.dll
x ./J2EE-RUNT-CD\IDE\system\msvcr71.dll
x ./J2EE-RUNT-CD\IDE\system\sap
x ./J2EE-RUNT-CD\IDE\system\sap\sapchart.ocx
x ./J2EE-RUNT-CD\IDE\system\sap\WDAAdobeControl.dll
SAPCAR: 540 file(s) extracted
D:\Install\Developer_Workplace_Update>
```

**Step 5:** Upgrade the Developer Workplace by starting IDE70setup.exe as depicted below.



```
CA\ Command Prompt
D:\Install\Developer_Workplace_Update\J2EE-RUNT-CD\IDE>dir
Volume in drive D is DRIVE_D
Volume Serial Number is 2CAF-A235

Directory of D:\Install\Developer_Workplace_Update\J2EE-RUNT-CD\IDE

10/04/2006  02:47 PM    <DIR>          .
10/04/2006  02:47 PM    <DIR>          ..
10/04/2006  02:47 PM    <DIR>          eclipse
08/26/2006  01:03 AM             31,314 IDE70setup.exe
08/26/2006  11:46 PM             25 LABEL.ASC
10/04/2006  02:47 PM    <DIR>          setup
10/04/2006  02:47 PM    <DIR>          system
                2 File(s)              31,339 bytes
                5 Dir(s)        2,028,269,568 bytes free
D:\Install\Developer_Workplace_Update\J2EE-RUNT-CD\IDE>
```

```
CA Select Command Prompt
D:\Install\Developer_Workplace_Update\J2EE-RUNT-CD\IDE>dir
Volume in drive D is DRIVE_D
Volume Serial Number is 2CAF-A235

Directory of D:\Install\Developer_Workplace_Update\J2EE-RUNT-CD\IDE

10/04/2006  02:47 PM  <DIR>      .
10/04/2006  02:47 PM  <DIR>      ..
10/04/2006  02:47 PM  <DIR>      eclipse
08/26/2006  01:03 AM      31,314 IDE70setup.exe
08/26/2006  11:46 PM      25 LABEL.ASC
10/04/2006  02:47 PM  <DIR>      setup
10/04/2006  02:47 PM  <DIR>      system
                2 File(s)      31,339 bytes
                5 Dir(s)  2,028,269,568 bytes free

D:\Install\Developer_Workplace_Update\J2EE-RUNT-CD\IDE>
```

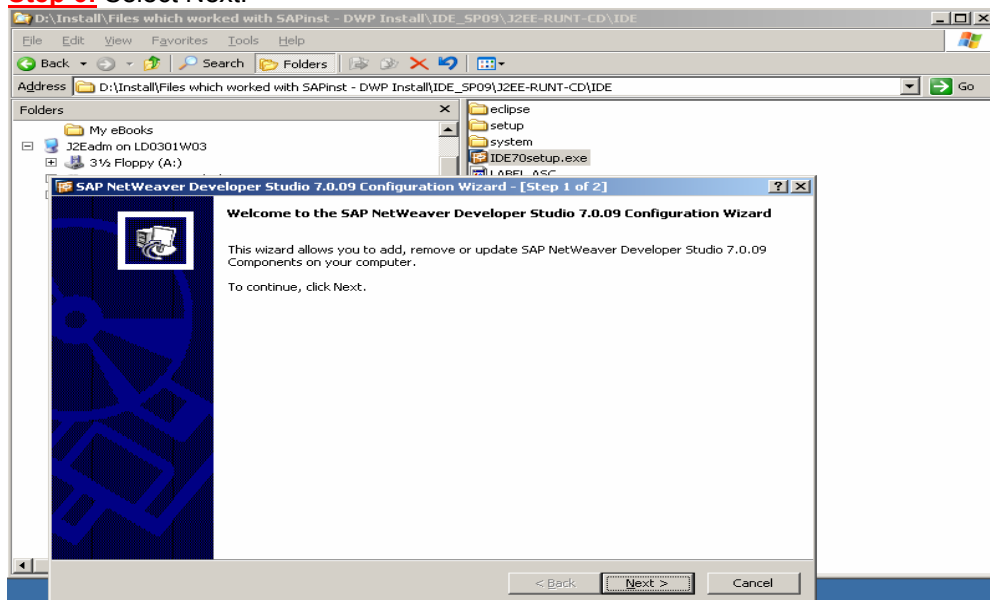
```
CA Select Command Prompt
D:\Install\Developer_Workplace_Update\J2EE-RUNT-CD\IDE>dir
Volume in drive D is DRIVE_D
Volume Serial Number is 2CAF-A235

Directory of D:\Install\Developer_Workplace_Update\J2EE-RUNT-CD\IDE

10/04/2006  02:47 PM  <DIR>      .
10/04/2006  02:47 PM  <DIR>      ..
10/04/2006  02:47 PM  <DIR>      eclipse
08/26/2006  01:03 AM      31,314 IDE70setup.exe
08/26/2006  11:46 PM      25 LABEL.ASC
10/04/2006  02:47 PM  <DIR>      setup
10/04/2006  02:47 PM  <DIR>      system
                2 File(s)      31,339 bytes
                5 Dir(s)  2,028,269,568 bytes free

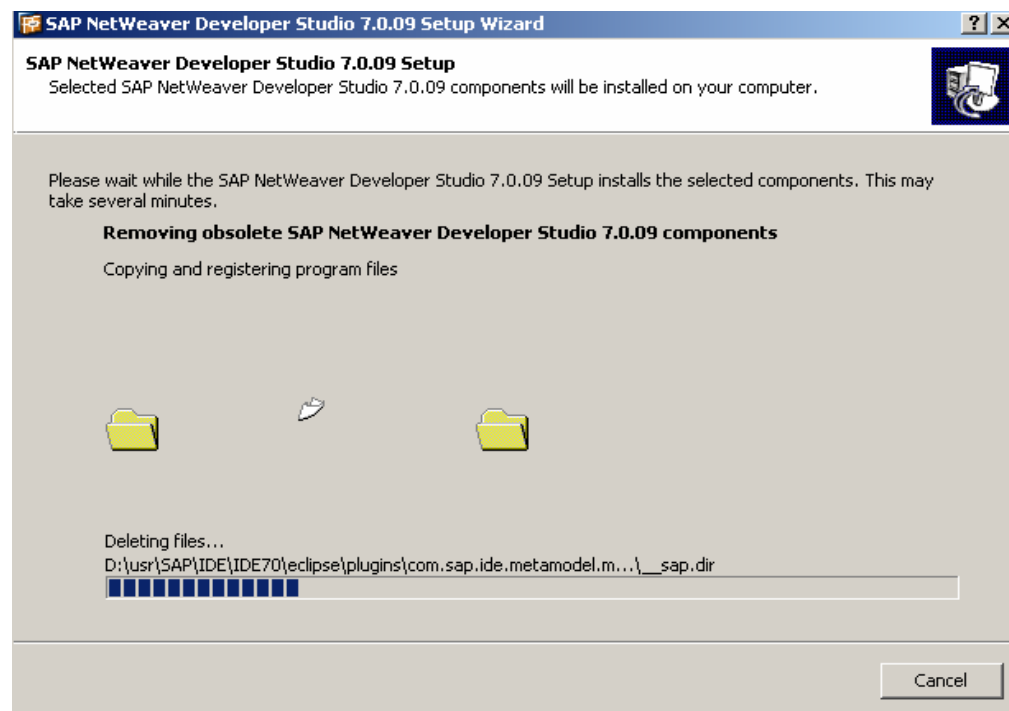
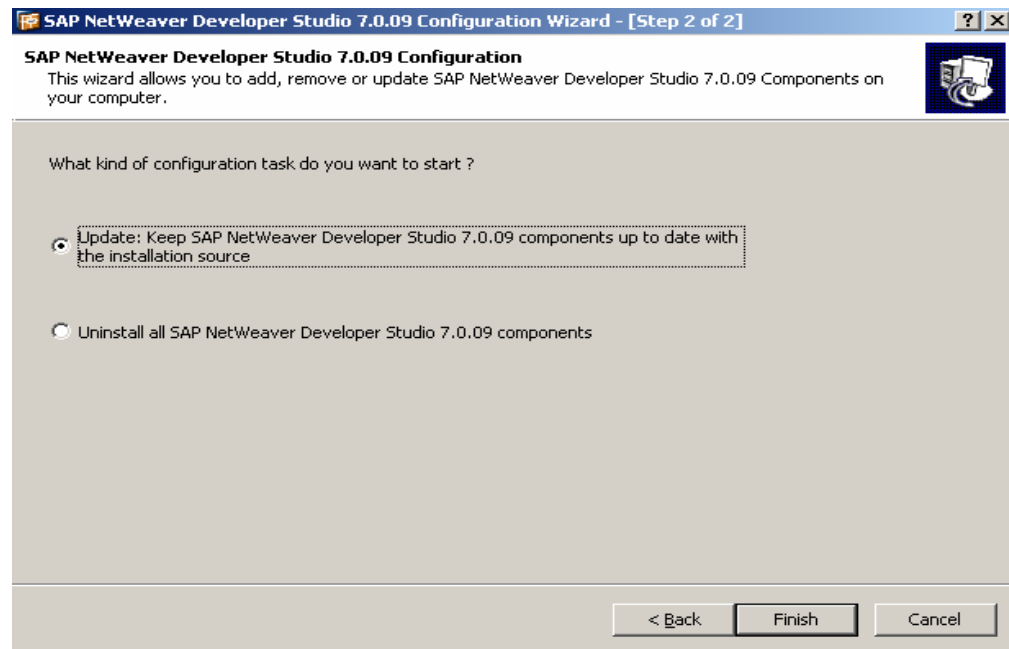
D:\Install\Developer_Workplace_Update\J2EE-RUNT-CD\IDE>IDE70setup.exe
```

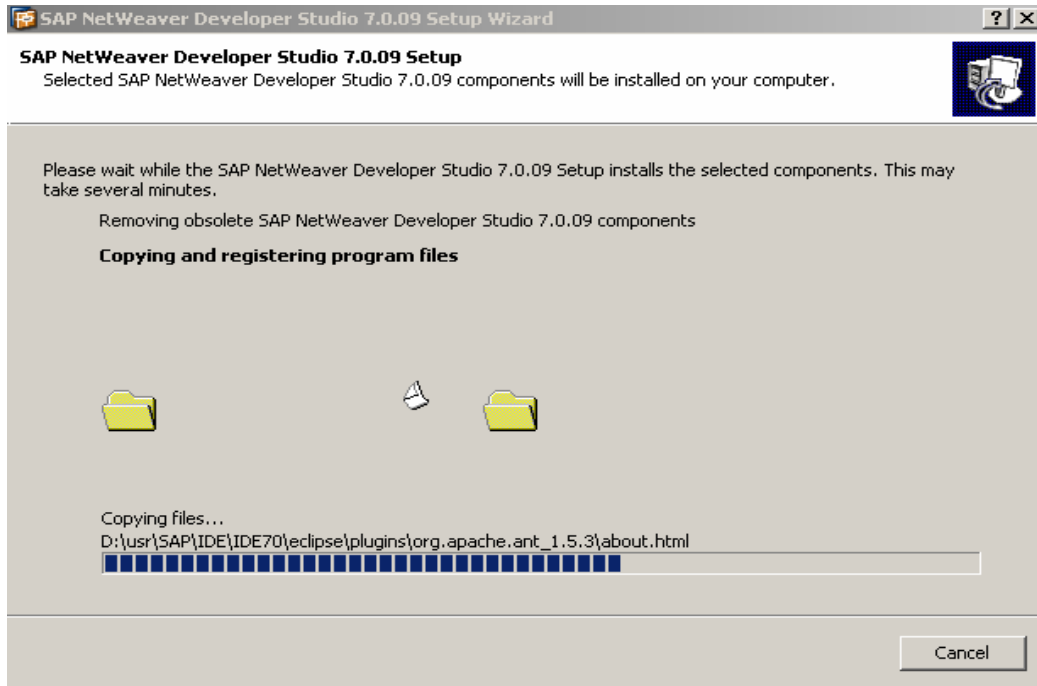
**Step 6:** Select Next.



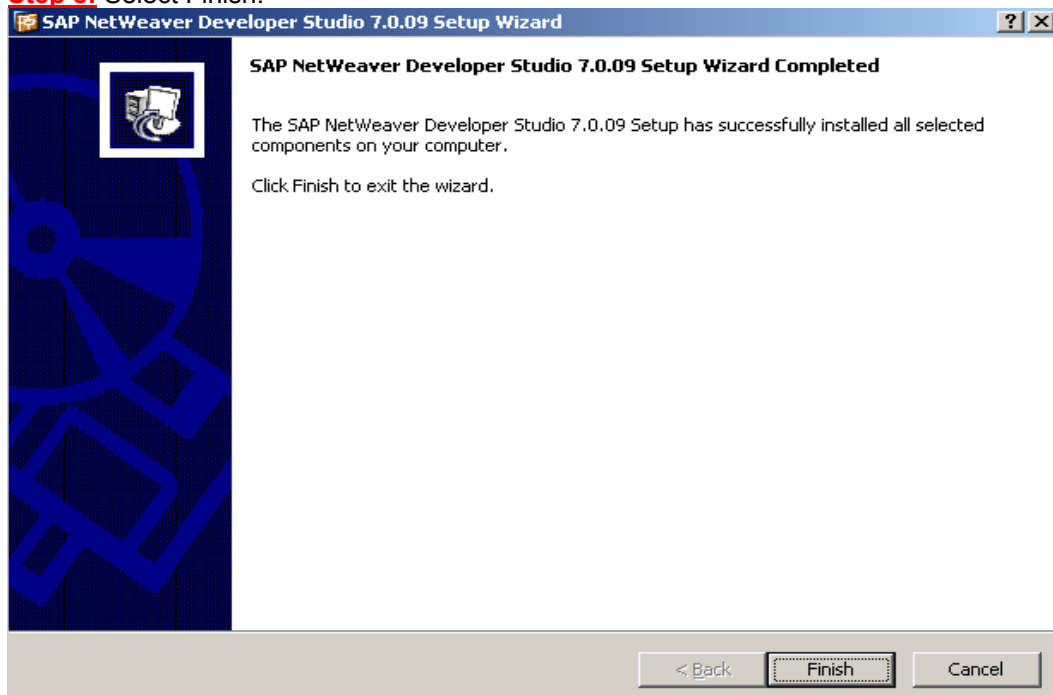


**Step 7:** Select Update: Keep SAP NetWeaver Developer Studio 7.0.09 components up to date with the installation source...Finish

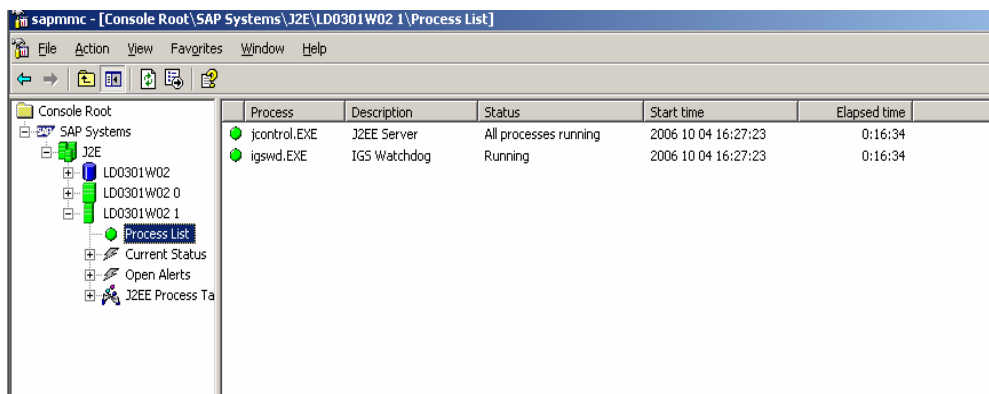
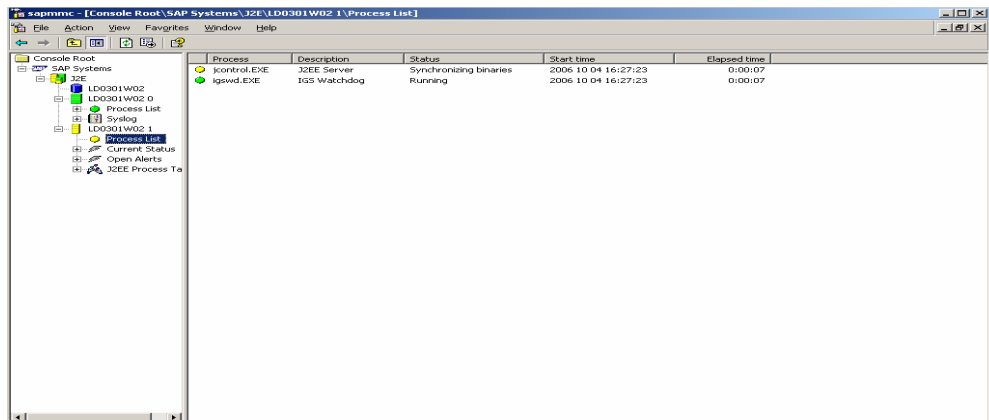
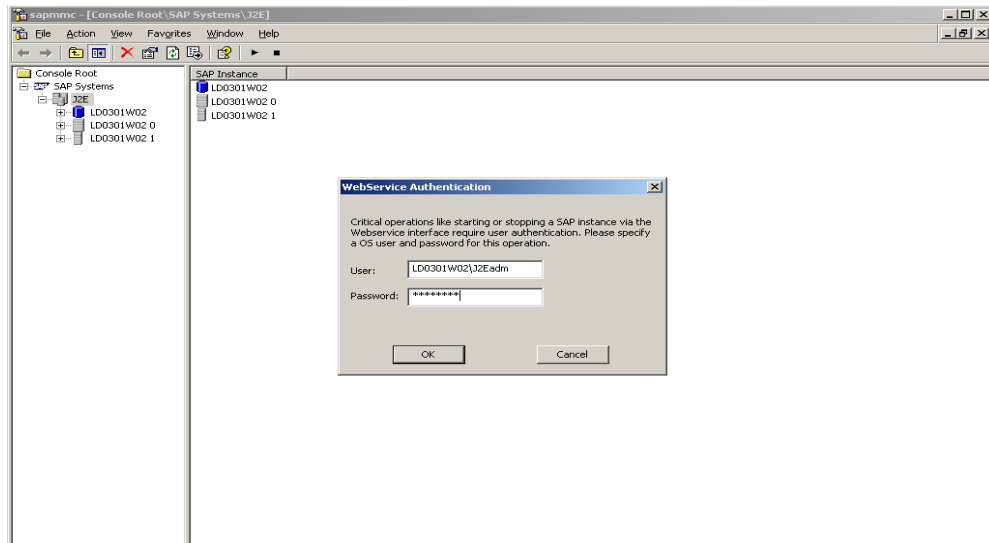




**Step 8:** Select Finish.



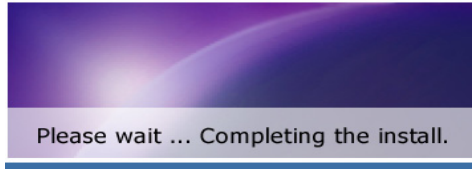
**Step 9:** Check the SAP NetWeaver Developer Studio, if it can be launched. Before you do that, just start the database and the J2EE engine again via SAPMMC as depicted below, in order to make sure, your complete Developer Workplace Installation appears to be working fine.



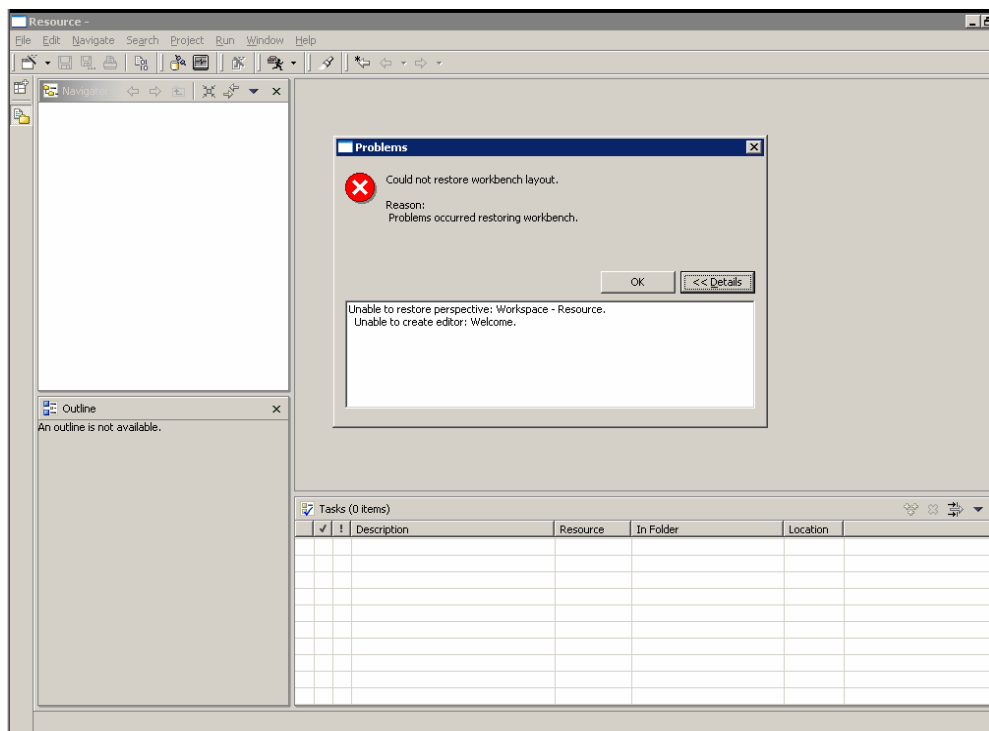


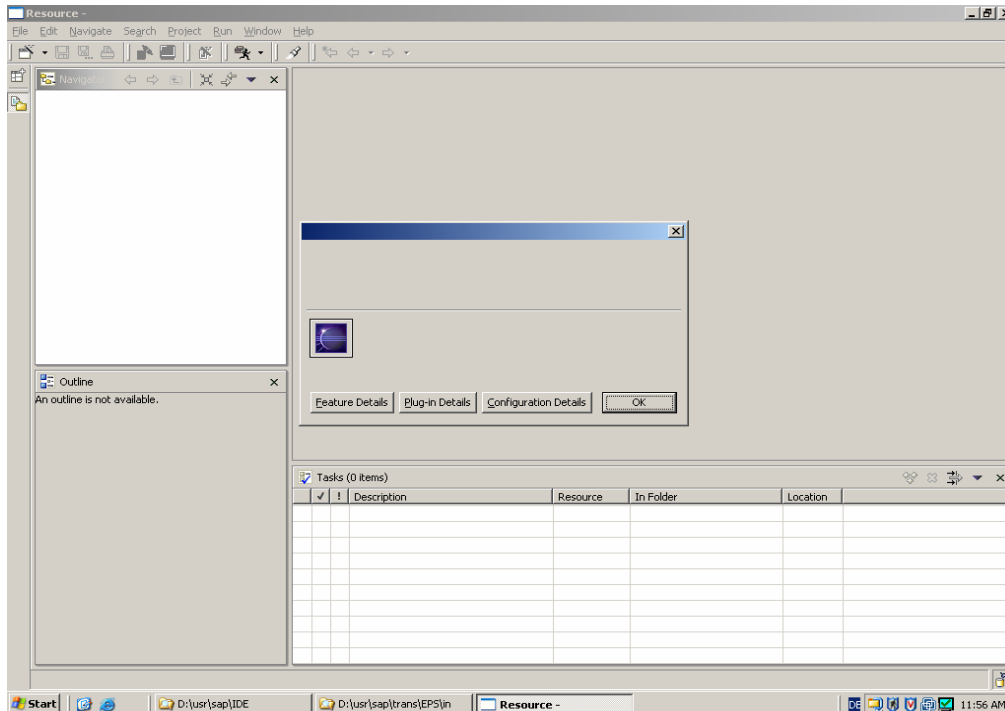
**Step 10:** Select the SAP NetWeaver Developer Studio icon from the desktop. When you start SAP NetWeaver Developer Studio for the first time AFTER you upgraded from SPS06 to SPS09 via IDE70setup.exe, you will get the following error message (see also SAP note 987509 - Update of NWDS causes problems) or a message indicating “Please wait ... Completing the install.”

**Could not restore workbench layout.  
Reason:  
Problems occurred restoring workbench.**



When you select OK, your SAP NetWeaver Developer Studio Welcome screen is missing, and when you select Help from the toolbar, About SAP NetWeaver Developer Studio the screen appears empty (see figures depicted below).

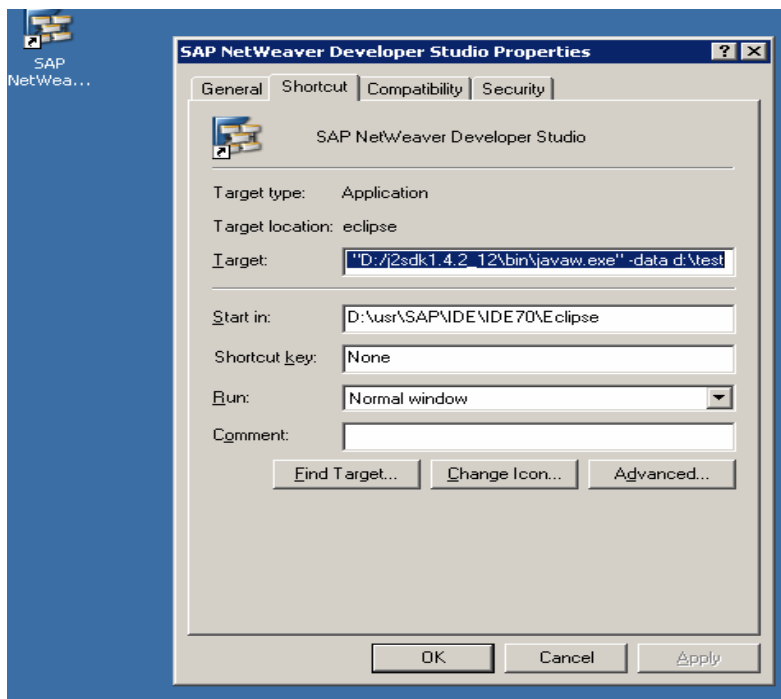




**Step 13:** Exit the SAP NetWeaver Developer Studio and copy the SAP NetWeaver Developer Studio icon as a new shortcut on to your desktop.

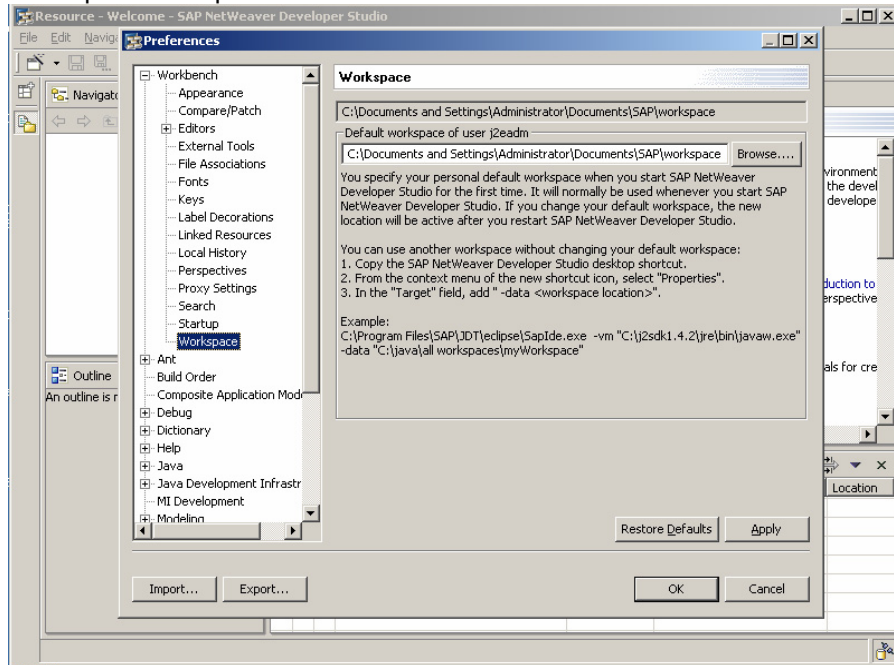
For example, copy, create new shortcut. Check for the new shortcut the properties, and in the Target section, add, for example, after .....javaw.exe" -data d:\test

The parameter -data d:\test is then a new location for your eclipse workspace.



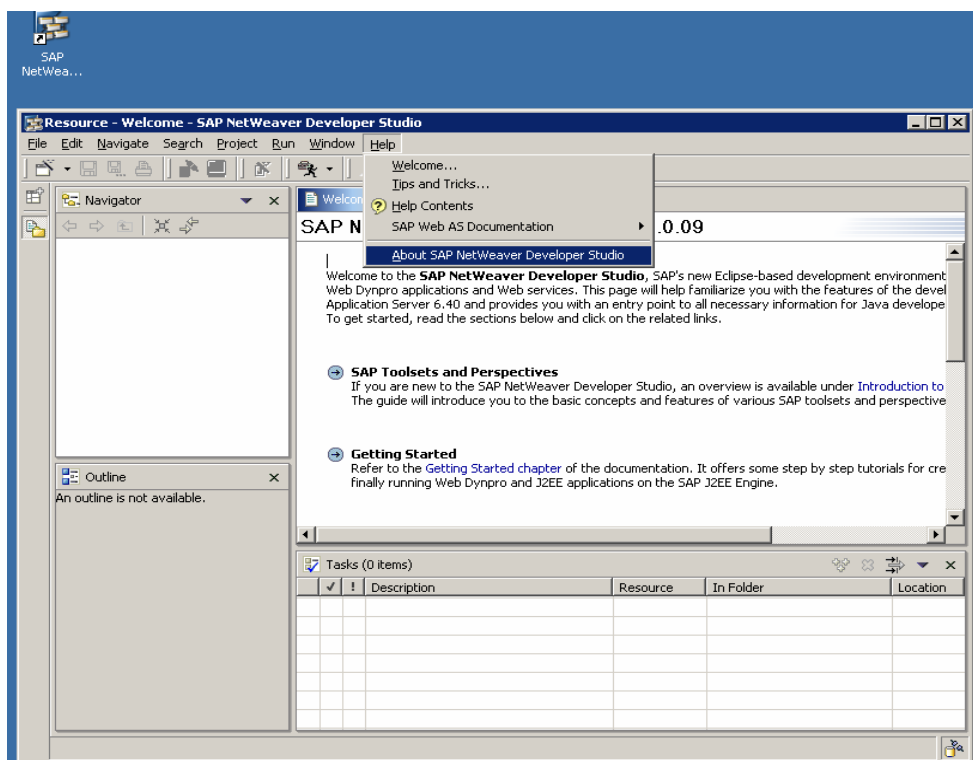
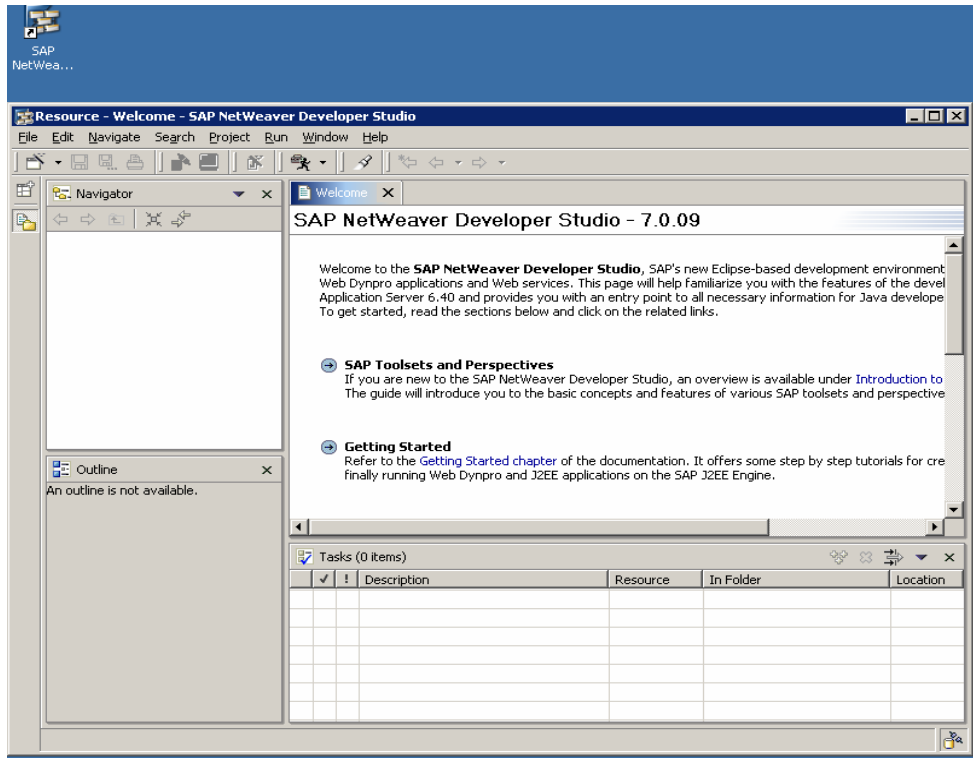
An alternative can be to start the Developer Studio with a new empty workspace renaming the file system folder containing the existing workspace.

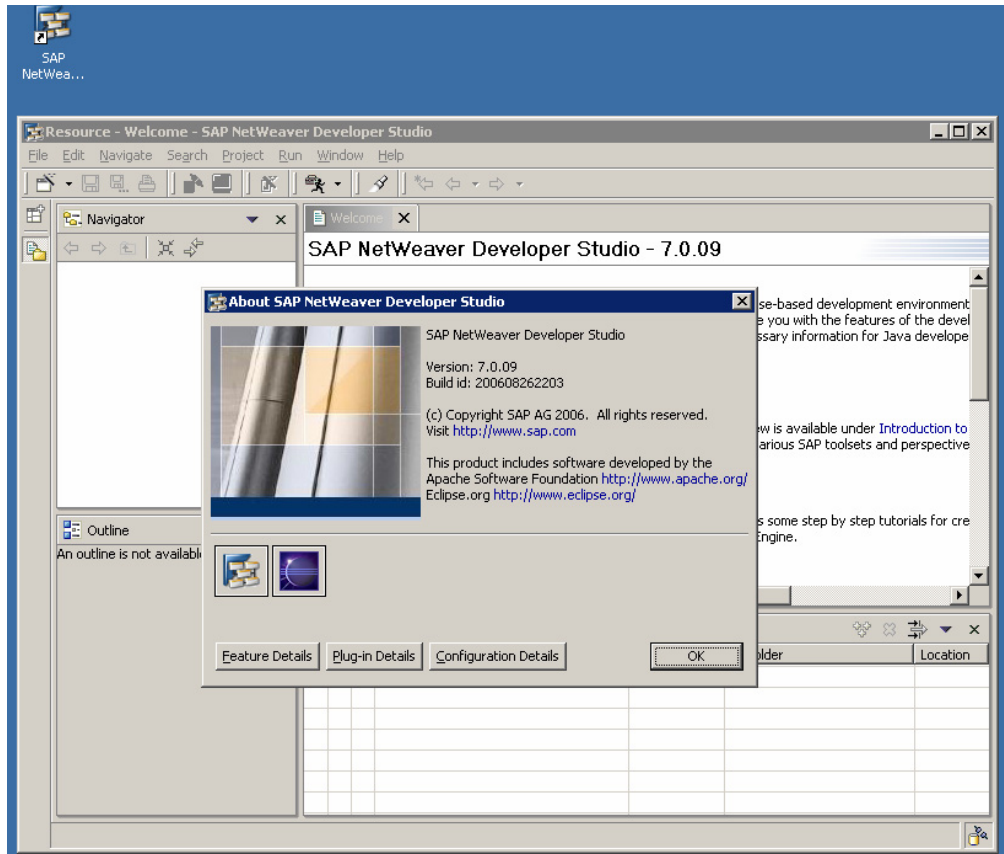
By default the workspace is located under %USERPROFILE%\Documents\SAP\workspace. The exact location of the workspace is also listed under Window -> Preferences -> Workbench -> Workspace as depicted below.



**Step 14:** After making the above mentioned changes, your SAP NetWeaver Developer Studio should start normally again as depicted below.







Now go on and read **SAP NetWeaver Developer Workplace SR1 (SPS06) – part 5 (JSPM SPS06 to SPS09)**

© Copyright 2006 SAP AG. All rights reserved.

SAP, R/3, mySAP, mySAP.com, xApps, xApp, SAP NetWeaver, and other SAP products and services mentioned herein as well as their respective logos are trademarks or registered trademarks of SAP AG in Germany and in several other countries all over the world. All other product and service names mentioned are the trademarks of their respective companies. Data contained in this document serves informational purposes only. National product specifications may vary. These materials are subject to change without notice. These materials are provided by SAP AG and its affiliated companies ("SAP Group") for informational purposes only, without representation or warranty of any kind, and SAP Group shall not be liable for errors or omissions with respect to the materials. The only warranties for SAP Group products and services are those that are set forth in the express warranty statements accompanying such products and services, if any. Nothing herein should be construed as constituting an additional warranty.