

The **DMRcate** package user's guide

Peters TJ, Buckley MJ, Statham A, Pidsley R, Clark SJ, Molloy PL

June 30, 2015

Summary

DMRcate extracts the most differentially methylated regions (DMRs) and variably methylated regions (VMRs) from Illumina® Infinium HumanMethylation450 BeadChip (hereinafter referred to as the 450k array) samples via kernel smoothing. We provide clean, transparent code and highly interpretable and exportable results.

```
source("http://bioconductor.org/biocLite.R")
biocLite("DMRcate")
```

Load **DMRcate** into the workspace:

```
library(DMRcate)
```

We now can load in the test data set of beta values. We assume at this point that normalisation and filtering out bad-quality probes via their detection p -values have already been done. Many packages are available for these purposes, including **minfi**, **watermelon** and **methylyumi**. M-values (logit-transform of beta) are preferable to beta values for significance testing via **limma** because of increased sensitivity, but we will retain the beta matrix for visualisation purposes later on.

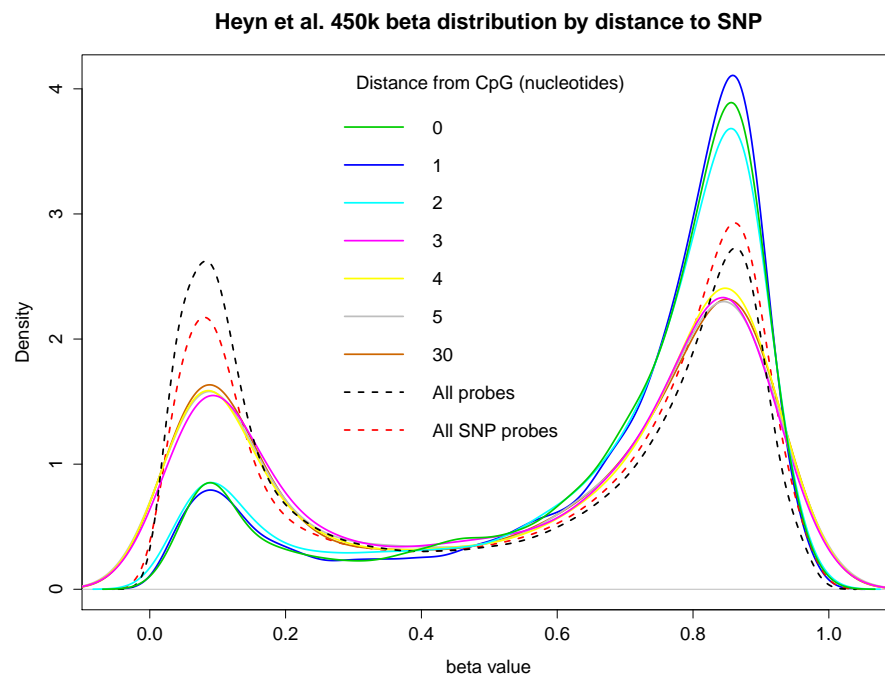
The TCGA (Cancer Genome Atlas - colorectal cancer) data in **myBetas** only comes from chromosome 20, but **DMRcate** will have no problem taking in the approximately half million probes as input for this pipeline either.

```
data(dmrcatedata)
myMs <- logit2(myBetas)
```

Some of the methylation measurements on the array may be confounded by proximity to SNPs, and cross-hybridisation to other areas of the genome[1]. In particular, probes that are 0, 1, or 2 nucleotides from the methylcytosine of interest show a markedly different distribution to those farther away, in healthy tissue (Figure 1).

It is with this in mind that we filter out probes 2 nucleotides or closer to a SNP that have a minor allele frequency greater than 0.05, and the approximately 30,000 [1] cross-reactive probes, so as to reduce confounding. Here we use

Figure 1: Beta distribution of 450K probes from publically available data from blood samples of healthy individuals [2] by their proximity to a SNP. “All SNP probes” refers to the 153 113 probes listed by Illumina® whose values may potentially be confounded by a SNP.



Illumina®’s database of approximately 150,000 potentially SNP-confounded probes, and an internally-loaded dataset of the probes from [1], to filter these probes out. About 600 are removed from our M-matrix of approximately 10,000:

```
nrow(illuminaSNPs)

## [1] 153113

nrow(myMs)

## [1] 10042

myMs.noSNPs <- rmSNPandCH(myMs, dist=2, mafcut=0.05)
nrow(myMs.noSNPs)

## [1] 9403
```

Next we want to annotate our matrix of M-values with relevant information. The default is the `ilmn12.hg19` annotation, but this can be substituted for any argument compatible with the interface provided by the `minfi` package. We also use the backbone of the `limma` pipeline for differential array analysis to get *t*-statistics changes and, optionally, filter probes by their *fdr*-corrected *p*-value. Here we have 38 patients with 2 tissue samples each taken from them. We want to compare within patients across tissue samples, so we set up our variables for a standard `limma` pipeline, and set `coef=39` in `cpg.annotate` since this corresponds to the phenotype comparison in `design`.

```
patient <- factor(sub("-", "*", "", colnames(myMs)))
type <- factor(sub(".*-", "", colnames(myMs)))
design <- model.matrix(~patient + type)
myannotation <- cpg.annotate(myMs.noSNPs, analysis.type="differential",
                             design=design, coef=39)

## Your contrast returned 6101 individually significant probes. We
## recommend the default setting of pcutoff in dmrcate().
## Loading required package: IlluminaHumanMethylation450kanno.ilmn12.hg19
```

Now we can find our most differentially methylated regions with `dmrcate`.

For each chromosome, two smoothed estimates are computed: one weighted with `myannotation$weights` and one not, for a null comparison. The two estimates are compared via a Satterthwaite approximation[3], and a significance test is calculated at all hg19 coordinates that an input probe maps to. After *fdr*-correction, regions are then agglomerated from groups of significant probes where the distance to the next consecutive probe is less than `lambda` nucleotides.

```
dmrcoutput <- dmrcate(myannotation, lambda=1000, C=2)
```

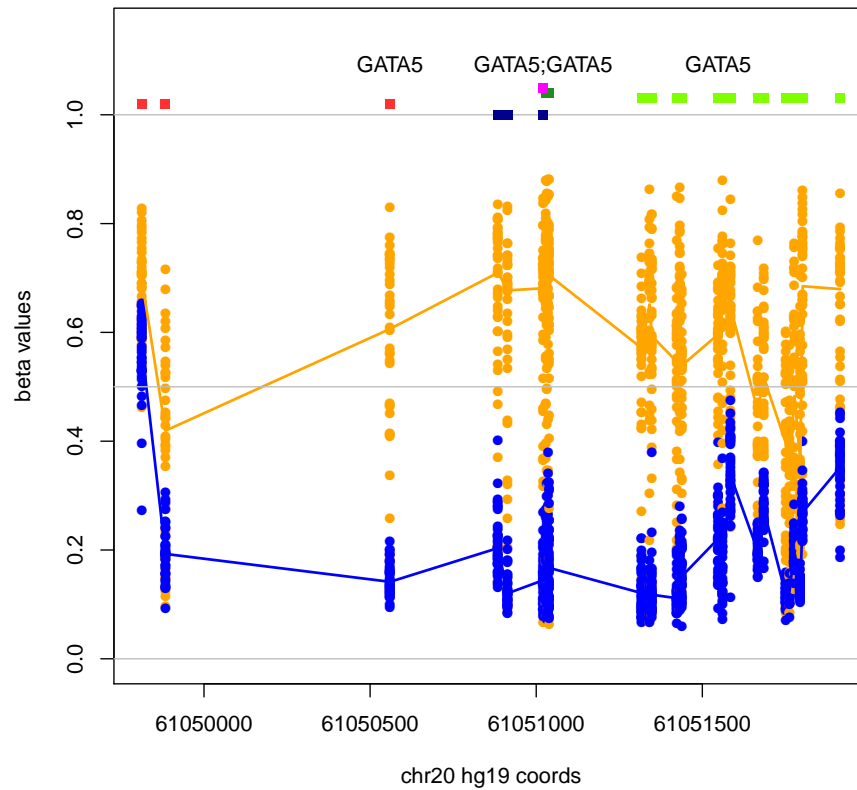
```
## Fitting chr20...
## Demarcating regions...
## Done!
```

Now we can plot a significant DMR. We'll choose one associated with the GATA5 locus.

```
head(dmrcoutput$results)
```

```
##      gene_assoc                                     group
## 839 GNASAS,GNAS Body,3'UTR,TSS200,TSS1500,5'UTR,1stExon
## 934      GATA5      Body,5'UTR,1stExon,TSS200,TSS1500
## 993  MIR124-3      TSS1500,TSS200,Body
## 554      TOX2      TSS1500,TSS200,Body,5'UTR,1stExon
## 275  TMEM90B      TSS1500,TSS200,5'UTR,1stExon
## 283      VSX1      Body,1stExon,5'UTR,TSS200,TSS1500
##
##      hg19coord no.probes minpval      meanpval      maxbetafc
## 839 chr20:57424521-57431303      77      0      3.002698e-29 -0.2084268
## 934 chr20:61049813-61051915      27      0      2.924163e-74  0.4770680
## 993 chr20:61806628-61810795      23      0      5.818155e-24  0.4182034
## 554 chr20:42543034-42545099      22      0      1.177014e-33  0.3684618
## 275 chr20:24448859-24452131      21      0      3.740710e-113  0.4263522
## 283 chr20:25061762-25065553      20      0      1.070921e-45  0.4679376
```

```
DMR.plot(dmrcoutput=dmrcoutput, dmr=2, betas=myBetas,
         phen.col=c(rep("orange", 38), rep("blue", 38)),
         pch=16, toscale=TRUE, plotmedians=TRUE)
```



```
sessionInfo()

## R version 3.2.1 (2015-06-18)
## Platform: x86_64-w64-mingw32/x64 (64-bit)
## Running under: Windows Server 2008 R2 x64 (build 7601) Service Pack 1
##
## locale:
## [1] LC_COLLATE=C
## [2] LC_CTYPE=English_United States.1252
## [3] LC_MONETARY=English_United States.1252
## [4] LC_NUMERIC=C
## [5] LC_TIME=English_United States.1252
##
## attached base packages:
## [1] stats4      parallel  stats      graphics  grDevices  utils      datasets
## [8] methods    base
```

```

##
## other attached packages:
## [1] IlluminaHumanMethylation450kanno.ilmn12.hg19_0.2.1
## [2] DMRcate_1.4.2
## [3] DMRcatedata_1.4.0
## [4] minfi_1.14.0
## [5] bumphunter_1.8.0
## [6] locfit_1.5-9.1
## [7] iterators_1.0.7
## [8] foreach_1.4.2
## [9] Biostrings_2.36.1
## [10] XVector_0.8.0
## [11] GenomicRanges_1.20.5
## [12] GenomeInfoDb_1.4.1
## [13] IRanges_2.2.5
## [14] S4Vectors_0.6.1
## [15] lattice_0.20-31
## [16] Biobase_2.28.0
## [17] BiocGenerics_0.14.0
## [18] limma_3.24.12
##
## loaded via a namespace (and not attached):
## [1] genefilter_1.50.0      splines_3.2.1
## [3] beanplot_1.2           rtracklayer_1.28.5
## [5] GenomicFeatures_1.20.1 XML_3.98-1.2
## [7] survival_2.38-2        DBI_0.3.1
## [9] BiocParallel_1.2.6     RColorBrewer_1.1-2
## [11] registry_0.2            rngtools_1.2.4
## [13] lambda.r_1.1.7         doRNG_1.6
## [15] matrixStats_0.14.2     plyr_1.8.3
## [17] pkgmaker_0.22           stringr_1.0.0
## [19] zlibbioc_1.14.0        futile.logger_1.4.1
## [21] codetools_0.2-11       evaluate_0.7
## [23] knitr_1.10.5           biomaRt_2.24.0
## [25] AnnotationDbi_1.30.1   illuminaio_0.10.0
## [27] preprocessCore_1.30.0  highr_0.5
## [29] Rcpp_0.11.6            xtable_1.7-4
## [31] formatR_1.2            base64_1.1
## [33] annotate_1.46.0         Rsamtools_1.20.4
## [35] digest_0.6.8           stringi_0.5-5
## [37] nor1mix_1.2-0          grid_3.2.1
## [39] GEOquery_2.34.0        quadprog_1.5-5
## [41] tools_3.2.1            bitops_1.0-6
## [43] magrittr_1.5           siggenes_1.42.0
## [45] RCurl_1.95-4.6         RSQLite_1.0.0

```

```
## [47] futile.options_1.0.0      MASS_7.3-41
## [49] reshape_0.8.5             mclust_5.0.1
## [51] nlme_3.1-121              GenomicAlignments_1.4.1
## [53] multtest_2.24.0
```

References

- [1] Chen YA, Lemire M, Choufani S, Butcher DT, Grafodatskaya D, Zanke BW, Gallinger S, Hudson TJ, Weksberg R. Discovery of cross-reactive probes and polymorphic CpGs in the Illumina Infinium HumanMethylation450 microarray. *Epigenetics*. 2013 Jan 11;8(2).
- [2] Heyn H, Li N, Ferreira HJ, Moran S, Pisano DG, Gomez A, Esteller M. Distinct DNA methylomes of newborns and centenarians. *Proceedings of the National Academy of Sciences*. 2012 **109**(26), 10522-7.
- [3] Satterthwaite, F. E. (1946), An Approximate Distribution of Estimates of Variance Components., *Biometrics Bulletin*. 1946 **2**: 110-114