

# Prestige 782 Series

## *Prestige 782 SHDSL Bridge/Router*



**Z**yxEL's Prestige 782 SHDSL bridge/router is designed for medium businesses to access the Internet or remote office networks. Adopting next-generation G.shdsl technologies, the Prestige 782 delivers better performance than its predecessor over the same loop distance. It provides symmetric LAN-to-LAN and Internet access transmissions at selectable speeds of up to 2.32Mbps. The auto-detect feature of Multiple Rate Selection and Auto Baud make the configuration easier than ever, hence making it an ideal high-speed alternative to leased line services.

### Features

#### SHDSL Compliance

- TC-PAM Line Code
- Auto/Manual Rate Adaptation
- Server or Client mode available
- Symmetrical speeds of up to 2.3 Mbps

#### ATM Support

- Multiple protocol over ATM AAL5 (MPOA, RFC1483)
- PPP over ATM (RFC 2364)
- ATM with up to 12 VCs support
- Virtual Circuit (VC) traffic shaping
- ATM Forum UNI 3.0/4.0 PVC
- I.610 OAM F4/F5 Loopback

#### PPP Support

- STAC™ LZS Data Compression of up to 4:1

#### IP Address Translation and Features

- NAT/SUA enables multiple workstations on the LAN to access the Internet for the cost of only one IP address
- NAT supports PAT (Port Address Translation) and multimedia applications such as NetMeeting, CuSeeMe, ICQ, Real Player, etc.
- IP Alias enables up to 3 virtual-LAN networks
- IP Policy Routing
- IP Multicasting

#### Routing Protocols (Router only)

- TCP/IP with RIP-1, RIP-2 and static routing support
- DHCP server and DHCP relay support
- DNS proxy support

#### Bridging

- Transparent Bridging

#### Management

- Web Configurator
- Menu-driven user interface for easy network management
- Administration via SNMP, Telnet or VT100 terminal
- TFTP and FTP firmware upgrade and configuration file backup/restoration
- System performance and status monitoring
- SNMP

#### Security Features

- Packet Filtering
- Password Protected System Management Terminal
- PAP (Password Authentication Protocol)
- CHAP (Challenge Handshake Authentication Protocol)
- Microsoft CHAP

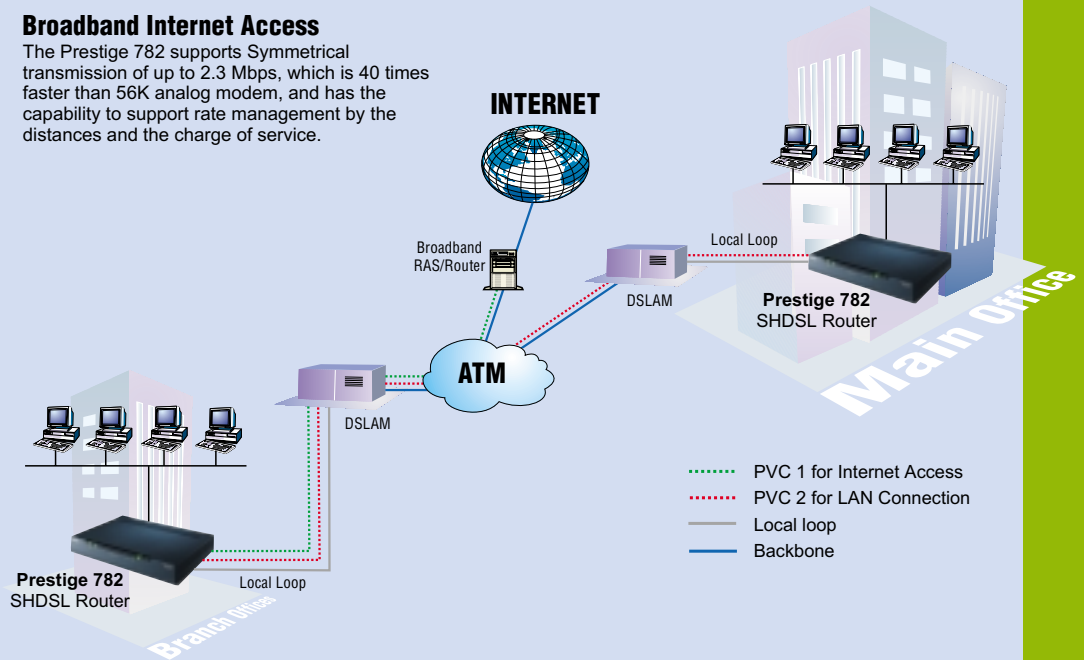
#### Physical Interfaces

- One RJ-11 port for G.shdsl connection
- One RJ-45 port for 10M/100M Ethernet LAN connection
- One Console port for local configuration and management

# Prestige 782

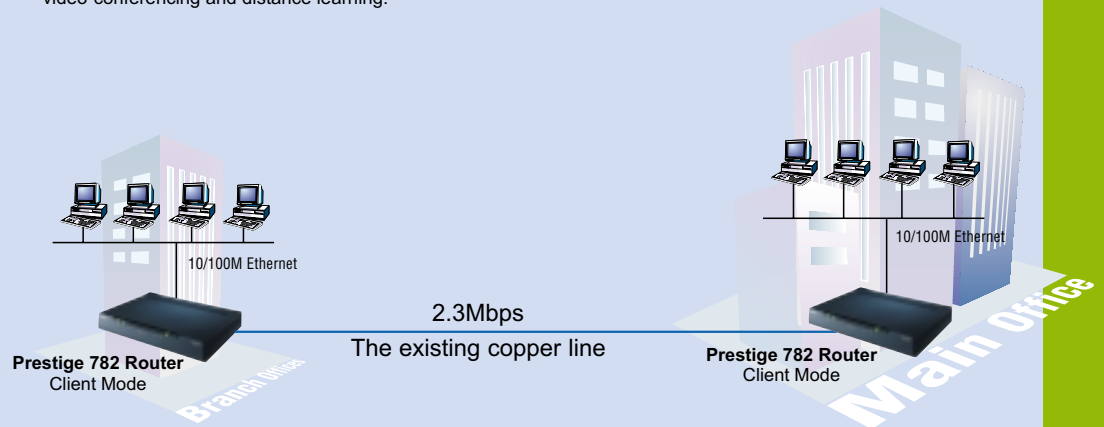
## Broadband Internet Access

The Prestige 782 supports Symmetrical transmission of up to 2.3 Mbps, which is 40 times faster than 56K analog modem, and has the capability to support rate management by the distances and the charge of service.



## LAN to LAN Connectivity

The Prestige 782 can be configurable in a server and for back to back applications. It can offer a cost-effective way for bandwidth-consuming applications, such as video-conferencing and distance learning.



This product is based on the ZyNOS Networking Operating System with free firmware upgrades that can be downloaded as they become available.

Specifications are subject to change without notice.

All trademarks are the property of their respective owners.

# ZyXEL

TOTAL INTERNET ACCESS SOLUTION

**Corporate Headquarters**  
**ZyXEL Communications Co.**  
 Tel: +886-3-578-3942  
 Fax: +886-3-578-2439  
 Email: sales@zyxel.com.tw  
 support@zyxel.com.tw  
<http://www.zyxel.com>  
<http://www.zyxel.com.tw>

**North America Headquarters**  
**ZyXEL Communications, Inc.**  
 Tel: +1-714-632-0882  
 Fax: +1-714-632-0858  
 Email: sales@zyxel.com  
 support@zyxel.com  
<http://www.zyxel.com>

**Denmark / Nordic Headquarters**  
**ZyXEL Communications A/S**  
 Tel: +45 39 55 07 00  
 Fax: +45 39 55 07 07  
 Email: sales@zyxel.dk  
 support@zyxel.dk  
<http://www.zyxel.dk>

**Germany**  
**ZyXEL Deutschland GmbH.**  
 Tel: +49 2405 6909 0  
 Fax: +49 2405 6909 99  
 Email: sales@zyxel.de  
 support@zyxel.de  
<http://www.zyxel.de>

**Austria**  
**ZyXEL Communications Services GmbH.**  
 Tel: +43-1-494 86 77-0  
 Fax: +43-1-494 86 78  
 Email: sales@zyxel.at  
 support@zyxel.at  
<http://www.zyxel.at>

**Malaysia**  
**ZyXEL Communications Co. (M) Sdn Bhd**  
 TEL: 603-795-44688  
 FAX: 603-795-34407  
 Email: sales@zyxel.com.my  
 support@zyxel.com.my  
<http://www.zyxel.com.my>