

ZyXEL



Compact, Flexible, Easy to Install

- **ADSL2+ Internet Access**
- **UPnP Support**
- **Zero Configuration**
- **MAP (Multimedia Auto Provisioner)**



Benefits

Higher-speed Internet Access

ZyXEL's P-660R Compact Series router complies with ADSL worldwide standards. With speeds of up to 12Mbps (ADSL2) or 24Mbps (ADSL2+), the P-660R Series offers higher data transfer rates and better bandwidth than traditional ADSL enabled gateways. Users can enjoy not only high-speed ADSL services, but also broadband multimedia applications such as interactive gaming, video streaming, and real-time audio much easier than before.

UPnP Support

The P-660R Compact Series supports UPnP discovery and UPnP NAT traversal. Using the standard TCP/IP protocol, the P-660R Compact Series can join a network, obtain an IP address, convey its capabilities, and learn about other devices on the network.

Zero Configuration Support

Thanks to ZyXEL's exclusive Zero Configuration technology, quick and easy installation allow users to hook up a DSL connection in minutes.

Compact Size

The P-660R Compact Series benefits from its smaller size. It's compact, flexible, easy to install. It's cooler in both operations and appearance.

ADSL2+ Router

P-660R
COMPACT SERIES



ROUTER



Specifications

ADSL Compliance

- RADSL (ANSI T1.413 Issue 2)
- G.dmt ADSL over POTS (G.992.1 Annex A)
- G.dmt ADSL over ISDN (G.992.1 Annex B and U-R2)
- G.hs (G.994.1)
- Auto-negotiating rate adaptation
- ADSL2 G.dmt.bis(G.992.3)
- ADSL2+ (G.992.5)
- Reach Extended ADSL(RE ADSL)

ATM supports

- 8 PVCs Support
- RFC 1483/2684 Multiple Protocol over AAL5
- VC and LLC Multiplexing
- Traffic Shaping UBR,CBR,VBR-nrt
- ATM Forum UNI 3.1/4.0 PVC
- ITU-T 1.610 F4/F5 OAM

PPP Support

- PPP (RFC 1661)
- PPP over AAL5 (RFC 2364)
- PPP over Ethernet (RFC 2516)
- PAP Authentication (RFC 1334)
- CHAP Authentication (RFC 1994)

Routing/Bridge Support

- IEEE 802.1d Transparent Bridging
- 802.1q Pass-through Bridge
- Up to 256 MAC Learning Address

- IP Routing: TCP, UDP, ICMP, ARP
- RIPv1 and RIPv2
- Static Route
- IP Multicast IGMP v1/v2

IP Management

- SUA (Single User Account)
- Multi-NAT (Network Address Translation)
- Multimedia Support
- VoIP SIP Pass-through
- VPN (IPSec, PPTP) Pass-through
- DHCP Server/Relay/Client
- IP Alias
- DNS Proxy
- Dynamic DNS
- UPnP Support

Network Management

- Web-based Configuration
- Command-line Interpreter(CLI)
- Telnet Remote Management
- SNMP MIB Support
- FTP/TFTP firmware upgrade and configuration backup/restore
- Built-in Diagnostic Tool

Security

- Password-protected System Management Terminal
- PAP(Password Authentication Protocol)
- CHAP(Challenge Handshake Authentication Protocol)

- Microsoft CHAP
- IP Packet Filtering for Access Control

Advanced

- Traffic Redirect
- Zero Configuration
- Multimedia Auto Provisioner

Hardware specification

- ADSL:One RJ-11 or RJ-45
- LAN:One Ethernet port,10/100M Auto MDI/MDIX
- Reset Button
- Status LEDs Indicator:
POWER,ETHERNET,DSL,INTERNET
- Power: 9V

Physical Specifications

- Dimensions: 110(W)x107(D)x35(H) mm
- Weight: P-660R-T1/T3 v2: 170g
P-660R-D1/D3: 161g

Environmental Specifications

- Operation Environment
 - Temperature: 0°C ~ 40°C
 - Humidity: 20% ~ 85%
- Storage Environment
 - Temperature: -20°C ~ 60°C
 - Humidity: 20% ~ 90%

Product Description

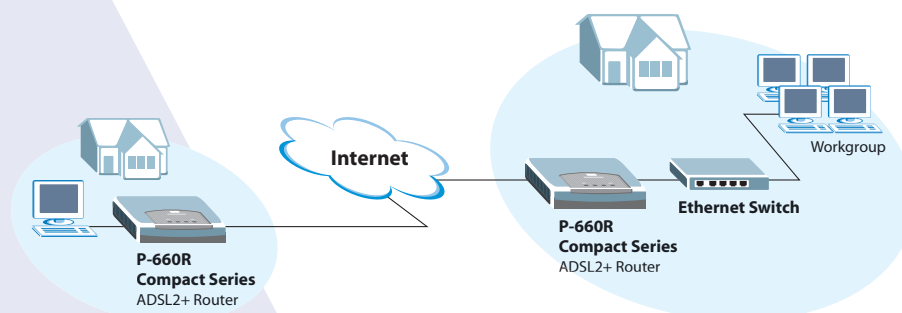
P-660R-T1 v2 ADSL2+ Router over POTS

P-660R-T3 v2 ADSL2+ Router over ISDN/U-R2

P-660R-D1 ADSL2+ Router over POTS

P-660R-D3 ADSL2+ Router over ISDN/U-R2

Application Diagram



For more product information, visit us on the web www.ZyXEL.com