

# *Prestige 630*

*ADSL USB Modem*

## *User's Guide*

Versions 1.0.2.1 and 1.0.2.2 for Mac OS 8.6, 9.1 and 9.2  
October 2002

# **ZyXEL**

TOTAL INTERNET ACCESS SOLUTION

# Copyright

## **Copyright ©2002 by ZyXEL Communications Corporation**

The contents of this publication may not be reproduced in any part or as a whole, transcribed, stored in a retrieval system, translated into any language, or transmitted in any form or by any means, electronic, mechanical, magnetic, optical, chemical, photocopying, manual, or otherwise, without the prior written permission of ZyXEL Communications Corporation.

Published by ZyXEL Communications Corporation. All rights reserved.

## **Disclaimer**

ZyXEL does not assume any liability arising out of the application or use of any products, or software described herein. Neither does it convey any license under its patent rights nor the patents' rights of others. ZyXEL further reserves the right to make changes in any products described herein without notice. This publication is subject to change without notice.

## **Trademarks**

Trademarks mentioned in this publication are used for identification purposes only and may be properties of their respective owners.

# ZyXEL Limited Warranty

ZyXEL warrants to the original end user (purchaser) that this product is free from any defects in materials or workmanship for a period of up to two (2) years from the date of purchase. During the warranty period and upon proof of purchase, should the product have indications of failure due to faulty workmanship and/or materials, ZyXEL will, at its discretion, repair or replace the defective products or components without charge for either parts or labor and to whatever extent it shall deem necessary to restore the product or components to proper operating condition. Any replacement will consist of a new or re-manufactured functionally equivalent product of equal value, and will be solely at the discretion of ZyXEL. This warranty shall not apply if the product is modified, misused, tampered with, damaged by an act of God, or subjected to abnormal working conditions.

## NOTE

Repair or replacement, as provided under this warranty, is the exclusive remedy of the purchaser. This warranty is in lieu of all other warranties, express or implied, including any implied warranty of merchantability or fitness for a particular use or purpose. ZyXEL shall in no event be held liable for indirect or consequential damages of any kind of character to the purchaser.

To obtain the services of this warranty, contact ZyXEL's Service Center for your Return Material Authorization number (RMA). Products must be returned Postage Prepaid. It is recommended that the unit be insured when shipped. Any returned products without proof of purchase or those with an out-dated warranty will be repaired or replaced (at the discretion of ZyXEL) and the customer will be billed for parts and labor. All repaired or replaced products will be shipped by ZyXEL to the corresponding return address, Postage Paid. This warranty gives you specific legal rights, and you may also have other rights that vary from country to country.



## Online Registration

Register online at [www.zyxel.com](http://www.zyxel.com) for free future product updates and information.

## Information for Canadian Users

The Industry Canada label identifies certified equipment. This certification means that the equipment meets certain telecommunications network protective operation and safety requirements. The Industry Canada does not guarantee that the equipment will operate to a user's satisfaction.

Before installing this equipment, users should ensure that it is permissible to be connected to the facilities of the local telecommunications company. The equipment must also be installed using an acceptable method of connection. In some cases, the company's inside wiring associated with a single line individual service may be extended by means of a certified connector assembly. The customer should be aware that compliance with the above conditions may not prevent degradation of service in some situations.

Repairs to certified equipment should be made by an authorized Canadian maintenance facility designated by the supplier. Any repairs or alterations made by the user to this equipment, or equipment malfunctions, may give the telecommunications company cause to request the user to disconnect the equipment.

For their own protection, users should ensure that the electrical ground connections of the power utility, telephone lines, and internal metallic water pipe system, if present, are connected together. This precaution may be particularly important in rural areas.

### **Caution**

Users should not attempt to make such connections themselves, but should contact the appropriate electrical inspection authority, or electrician, as appropriate.

### **Note**

This digital apparatus does not exceed the Class A limits for radio noise emissions from digital apparatus set out in the radio interference regulations of Industry.

# Federal Communications Commission (FCC) Interference Statement

This device complies with Part 15 of FCC rules. Operation is subject to the following two conditions:

This device may not cause harmful interference.

This device must accept any interference received, including interference that may cause undesired operations.

This equipment has been tested and found to comply with the limits for a CLASS B digital device pursuant to Part 15 of the FCC Rules. These limits are designed to provide reasonable protection against harmful interference in a commercial environment. This equipment generates, uses, and can radiate radio frequency energy, and if not installed and used in accordance with the instructions, may cause harmful interference to radio communications.

If this equipment does cause harmful interference to radio/television reception, which can be determined by turning the equipment off and on, the user is encouraged to try to correct the interference by one or more of the following measures:

Reorient or relocate the receiving antenna.

Increase the separation between the equipment and the receiver.

Connect the equipment into an outlet on a circuit different from that to which the receiver is connected.

Consult the dealer or an experienced radio/TV technician for help.

## **Notice 1**

Changes or modifications not expressly approved by the party responsible for compliance could void the user's authority to operate the equipment.

## **Certifications**

Refer to the product page at [www.zyxel.com](http://www.zyxel.com).

# Customer Support

When contacting your Customer Support Representative, please have the following information ready:

- ◆ Product model and serial number.
- ◆ Warranty Information.
- ◆ Date you received your Product.
- ◆ Brief description of the problem and the steps you took to solve it.

METHOD	E-MAIL SUPPORT/SALES	TELEPHONE/FAX	WEB SITE/ FTP SITE	REGULAR MAIL
<b>LOCATION</b>				
<b>WORLDWIDE</b>	<a href="mailto:Support@zyxel.com.tw">Support@zyxel.com.tw</a> <a href="mailto:Support@europe.zyxel.com">Support@europe.zyxel.com</a> <a href="mailto:Sales@zyxel.com.tw">Sales@zyxel.com.tw</a>	+886-3-578-3942  +886-3-578-2439	<a href="http://www.zyxel.com">www.zyxel.com</a> <a href="http://www.europe.zyxel.com">www.europe.zyxel.com</a> <a href="ftp://ftp.europe.zyxel.com">ftp.europe.zyxel.com</a>	ZyXEL Communications Corp., 6 Innovation Road II, Science-Based Industrial Park, Hsinchu, 300, Taiwan
<b>NORTH AMERICA</b>	<a href="mailto:Support@zyxel.com">Support@zyxel.com</a> <a href="mailto:Sales@zyxel.com">Sales@zyxel.com</a>	+1-714-632-0882 800-255-4101  +1-714-632-0858	<a href="http://www.zyxel.com">www.zyxel.com</a> <a href="ftp://ftp.zyxel.com">ftp.zyxel.com</a>	ZyXEL Communications Inc., 1650 Miraloma Avenue, Placentia, CA 92870, U.S.A.
<b>SCANDINAVIA</b>	<a href="mailto:Support@zyxel.dk">Support@zyxel.dk</a> <a href="mailto:Sales@zyxel.dk">Sales@zyxel.dk</a>	+45-3955-0700  +45-3955-0707	<a href="http://www.zyxel.dk">www.zyxel.dk</a> <a href="ftp://ftp.zyxel.dk">ftp.zyxel.dk</a>	ZyXEL Communications A/S, Columbusvej 5, 2860 Soeborg, Denmark
<b>GERMANY</b>	<a href="mailto:Support@zyxel.de">Support@zyxel.de</a> <a href="mailto:Sales@zyxel.de">Sales@zyxel.de</a>	+49-2405-6909-0  +49-2405-6909-99	<a href="http://www.zyxel.de">www.zyxel.de</a>	ZyXEL Deutschland GmbH. Adenauerstr. 20/A4 D-52146 Wuersele, Germany

# Table of Contents

<i>Copyright</i> .....	<i>ii</i>
<i>ZyXEL Limited Warranty</i> .....	<i>iii</i>
<i>Information for Canadian Users</i> .....	<i>iv</i>
<i>Federal Communications Commission (FCC) Interference Statement</i> .....	<i>v</i>
<i>Customer Support</i> .....	<i>vi</i>
<i>List of Figures</i> .....	<i>ix</i>
<i>List of Tables</i> .....	<i>ix</i>
<i>Preface</i> .....	<i>x</i>
<b>Chapter 1 Installing Your Modem</b> .....	<b>1-1</b>
1.1 <i>Operating Systems</i> .....	<i>1-1</i>
1.2 <i>Needed Information</i> .....	<i>1-1</i>
1.3 <i>Installation</i> .....	<i>1-2</i>
1.4 <i>Front Panel LEDs</i> .....	<i>1-4</i>
1.5 <i>Front Panel LED Descriptions</i> .....	<i>1-5</i>
<b>Chapter 2 Configuring Your Macintosh for Internet Access</b> .....	<b>2-1</b>
2.1 <i>Configuring Your Mac for RFC1483 and Making a DSL Connection</i> .....	<i>2-1</i>
2.2 <i>Configuring Your Mac for Making a PPPoA Connection</i> .....	<i>2-3</i>
2.3 <i>PPPoA Dialup Connection Setup</i> .....	<i>2-10</i>
<b>Chapter 3 Control And Status</b> .....	<b>3-1</b>
3.1 <i>CSA</i> .....	<i>3-1</i>
3.2 <i>ADSL Control and Status Interface Screen</i> .....	<i>3-2</i>
<b>Chapter 4 Uninstalling Your Modem</b> .....	<b>4-1</b>
4.1 <i>Uninstalling the Hardware</i> .....	<i>4-1</i>

4.2	<i>Uninstalling the Driver</i> .....	4-1
<b>Chapter 5</b>	<b>Troubleshooting</b> .....	<b>5-1</b>
	<i>Index</i> .....	<i>A</i>



## List of Figures

Figure 1-1 About This Computer .....	1-1
Figure 1-2 USB ADSL Modem App Icon.....	1-2
Figure 1-3 ADSL PPP Modem App Icon.....	1-2
Figure 1-4 Back Panel Connections .....	1-3
Figure 1-5 USB Cable Connectors.....	1-4
Figure 1-6 Splitter .....	1-4
Figure 1-7 Front Panel LEDs .....	1-5
Figure 2-1 Path to TCP/IP Configuration.....	2-2
Figure 2-2 TCP/IP Settings for RFC1483 .....	2-3
Figure 2-3 Path to Modem Configuration .....	2-4
Figure 2-4 PPPoA Configuration .....	2-5
Figure 2-5 TCP/IP Settings for PPPoA .....	2-6
Figure 2-6 Path to Remote Access Configuration .....	2-7
Figure 2-7 Remote Access .....	2-8
Figure 2-8 Remote Access: Connection Tab.....	2-9
Figure 2-9 Remote Access: Protocol Tab (OS 8.6 Only) .....	2-10
Figure 2-10 Desktop Remote Access Icon .....	2-11
Figure 2-11 Initiate the Dial-up Connection.....	2-11
Figure 3-1 Access Path to the CSA .....	3-1
Figure 3-2 Control and Status Application.....	3-2
Figure 4-1 USB ADSL Modem App Icon.....	4-1
Figure 4-2 ADSL PPP Modem App Icon.....	4-2
Figure 4-3 Select Uninstall.....	4-2

## List of Tables

Table 1-1 Needed Information .....	1-1
Table 1-2 LED Descriptions.....	1-5
Table 5-1 Troubleshooting .....	5-1

# Preface

This User's Guide provides instructions for using the Prestige 630 ADSL USB modem with Macintosh computers using Mac OS 8.6, 9.1 and 9.2 and later, but before OS X.

## Features

The ZyXEL Prestige 630 ADSL USB Modem provides the following features:

- Compliant with Universal Serial Bus Specification Revision 1.1
- USB bus-powered; an external power supply is not required
- Compatible with all G.DMT compliant Central Office (CO) Digital Subscriber Line Access Multiplexer (DSLAM) equipment
- Software upgradable
- Includes a user interface screen for checking the status of the connection
- An RJ-11 port for ADSL connection
- Support for DSL downstream data rates of up to 8 Mbps
- Support for DSL upstream data rates of up to 800 Kbps.

## Related Documentation

- Included CD

This disk contains the installation driver, release note, support note, supporting software and information on product registration.

- Glossary and ZyXEL Web Site

Please refer to [www.zyxel.com](http://www.zyxel.com) for an online glossary of networking terms or the ZyXEL download library for additional support documentation.

## About This Manual

This manual provides information about modem installation and operation.

## Syntax Conventions

- Mouse action sequences are denoted using a comma. For example, “click the Apple icon, **Control Panels** and then **Modem**” means first click the Apple icon, then point your mouse pointer to **Control Panels** and then click **Modem**.
- "Select" or "Choose" means for you to use one of the predefined choices.

- Button and field labels, links and screen names are in **Bold Times New Roman** font.
- Predefined choices are in **Bold Arial** font.
- The “ZyXEL Prestige 630 ADSL USB Modem” is also referred to as the “modem” in this manual.
- Driver version 1.0.2.1 is the RFC 1483 driver.
- Driver version 1.0.2.2 is the PPPoA driver.



# Chapter 1

## Installing Your Modem

*This chapter shows you how to install your modem and USB driver and introduces the ports and LED indicators.*

### 1.1 Operating Systems

The modem drivers are compatible with the Macintosh operating system versions 8.6, 9.1 and 9.2 and later (but not X).

Click the Apple icon and then **About This Computer** in order to see which OS version is on your Macintosh.



**Figure 1-1 About This Computer**

The screens you see may differ slightly from the screens shown depending on the version of your operating system.

### 1.2 Needed Information

Fill in the table below with information from your Internet Service Provider (ISP) and telephone company before installation. You may not need to fill in every blank.

**Table 1-1 Needed Information**

REQUIRED INFORMATION	FILL IN THE BLANKS
<b>Driver Type:</b> RFC 1483 or PPPoA.	
<b>User Name:</b> For PPPoA, this lets your ISP know which account you are logging into.	
<b>Password:</b> For PPPoA, this protects your account from unauthorized use.	

Your modem supports **RFC 1483** and **PPPoA** (Point to Point Protocol over ATM) drivers. These refer to the underlying data transport protocols. Use the RFC 1483 driver with always-on accounts and the PPPoA driver with dial-up PPPoA accounts.

## 1.3 Installation

The following sections describe how to install your modem driver and modem. Install the modem driver first and then the modem hardware.

---

**Save and close all other running programs before installing the modem driver.**

---

### 1.3.1 Modem Driver Installation

- Step 1.** Insert the included CD into the CD-ROM drive. An icon for the CD appears.
- Step 2.** Double-click the CD's icon.
- Step 3.** Double-click the Mac 8.9 folder.
- Step 4.** The Mac 8.9 folder contains two folders, one for RFC 1483 and one for PPPoA. Double-click the RFC 1483 folder if you need a RFC 1483 driver. Double-click the PPPoA folder if you need a PPPoA driver.
- Step 5.** The folder contains either the **USB ADSL Modem App** icon (for RFC 1483) or the **ADSL PPP Modem App** (for PPPoA) icon. Double-click the **USB ADSL Modem** (or **ADSL PPP Modem**) icon.



**Figure 1-2 USB ADSL Modem App Icon**

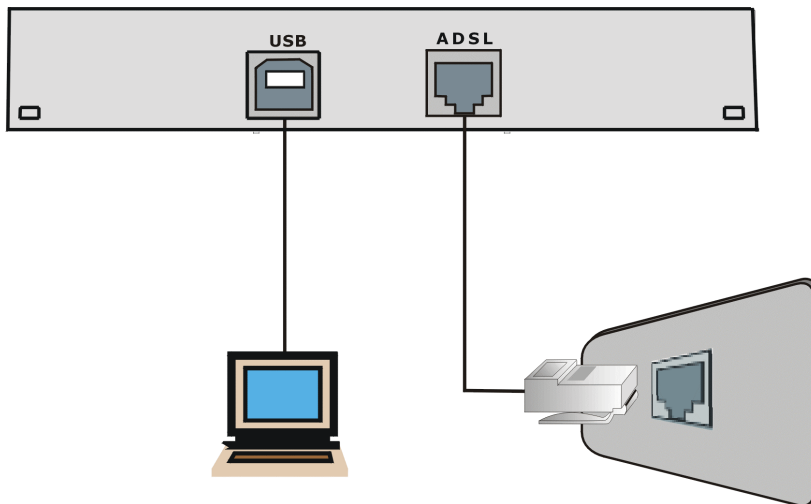


**Figure 1-3 ADSL PPP Modem App Icon**

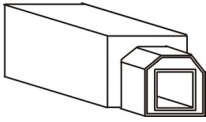
- Step 6.** Click **Continue** in the **Readme Text** screen.
- Step 7.** Click **Agree** in the **License Agreement** screen.
- Step 8.** Click **Continue** in the **Install** screen.
- Step 9.** Make sure you have saved and closed all other running applications and click **Continue** in the screen that tells you to restart your after you install this driver.
- Step 10.** Click **Restart** to restart your computer.

### 1.3.2 Modem Hardware Installation

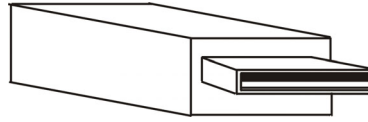
- Step 1.** Connect the square end of the USB cable to the back of your modem and then connect the rectangular end of the USB cable to your computer's USB port.



**Figure 1-4 Back Panel Connections**



Connect this cable end to your modem.



Connect this cable end to your computer.

**Figure 1-5 USB Cable Connectors**

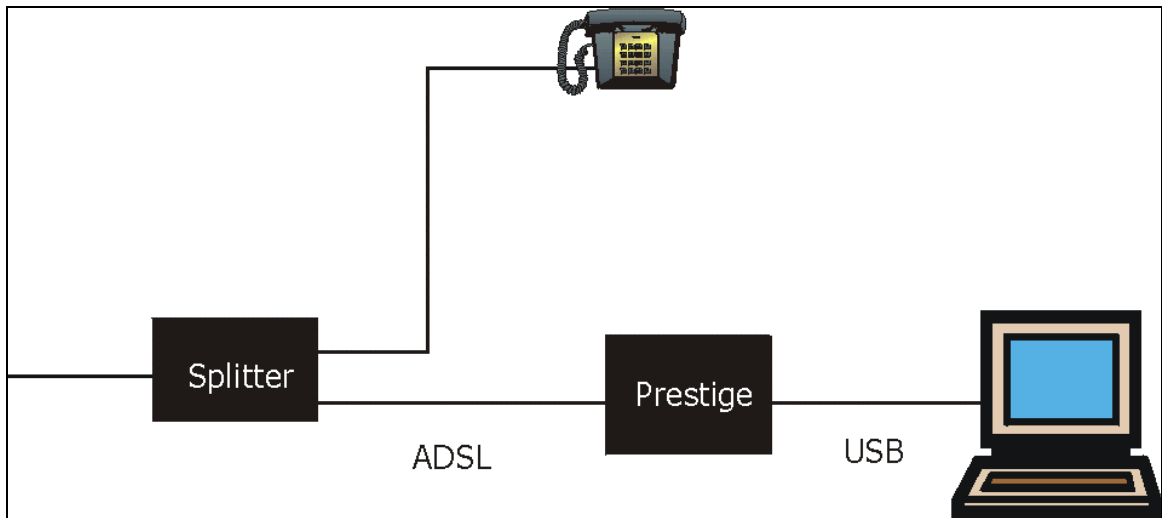
**Step 2.** Use a telephone wire to connect the ADSL port to a telephone wall jack.

---

**You may opt to buy a telephone microfilter to install between the wall jack and your telephone(s). A microfilter acts as a low pass filter that screens out possible interference.**

---

Use a splitter (optional) in order to plug a phone into the same telephone line. See the following figure.



**Figure 1-6 Splitter**

## 1.4 Front Panel LEDs

The LEDs on the front panel of your modem indicate operational status. The table after the following figure describes the LED functions.



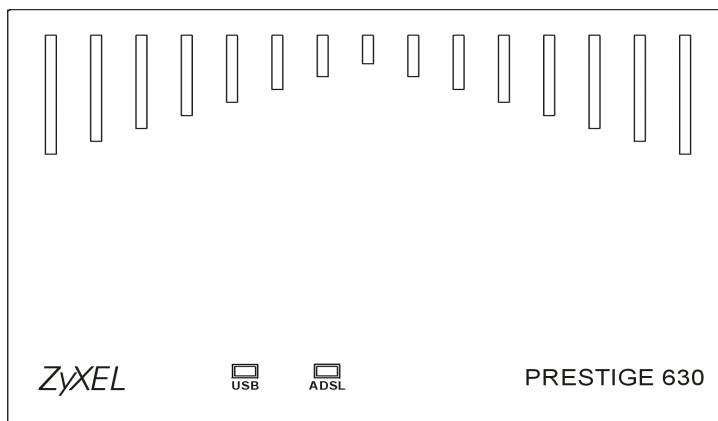


Figure 1-7 Front Panel LEDs

## 1.5 Front Panel LED Descriptions

Table 1-2 LED Descriptions

LED	FUNCTION	DESCRIPTION
<b>USB</b>	USB Interface and Modem Power Connection	<p>This LED is off when the modem's USB port is not connected or not receiving power.</p> <p>The LED is on when the USB is connected, receiving power, and the driver software is installed.</p> <p>This LED blinks during data transfer or whenever the ADSL link is up.</p>
<b>ADSL</b>	ADSL Interface	<p>This LED is off when the software driver has not been installed or after you click the <b>Disconnect</b> button in the CSA interface.</p> <p>This LED is on when the ADSL link is up.</p> <p>This LED blinks when the ADSL link is connecting or waiting to connect.</p>



# Chapter 2

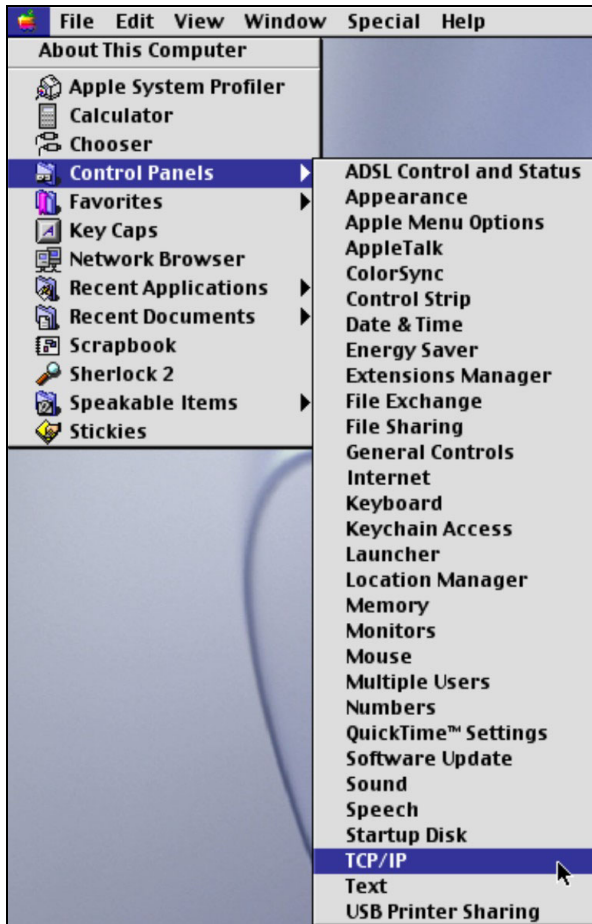
## Configuring Your Macintosh for Internet Access

*The following sections describe how to configure your Macintosh computer for ADSL Internet access using the RFC1483 or PPPoA driver you installed in 1.3.1.*

### 2.1 Configuring Your Mac for RFC1483 and Making a DSL Connection

Use the following steps to configure your Macintosh when using a RFC1483 driver.

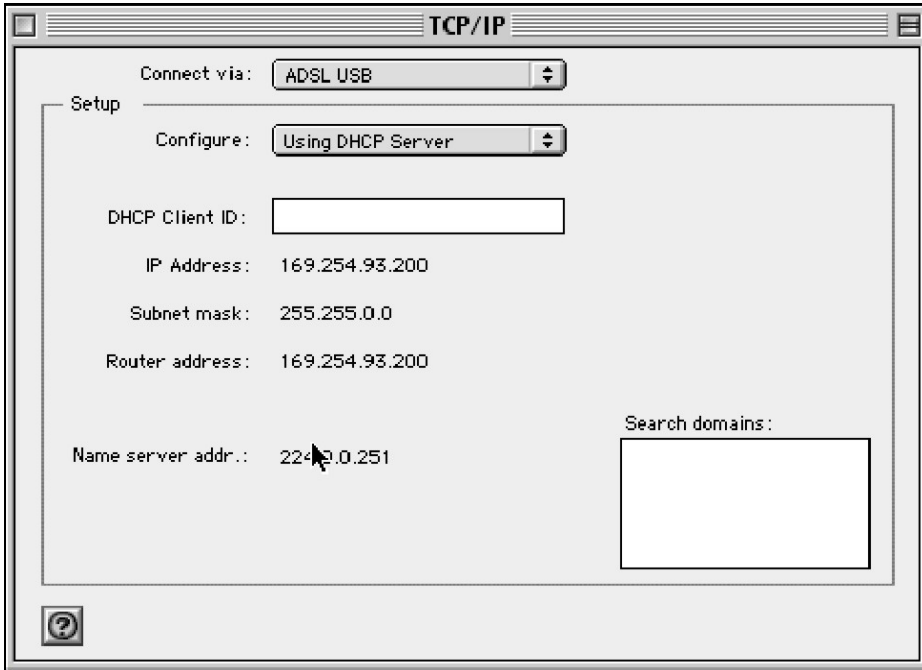
**Step 1.** Click the Apple icon, **Control Panels** and **TCP/IP**.



**Figure 2-1 Path to TCP/IP Configuration**

- Step 2.** Select **ADSL USB** in the **Connect via** field. Select **Using DHCP Server** in the **Configure** field if your ISP has will dynamically (automatically) assign your IP address. Follow your ISP's instructions if it tells you to enter an IP address.

**Step 3.** Enter the **DHCP Client ID** if your ISP provided one. Close the screen.



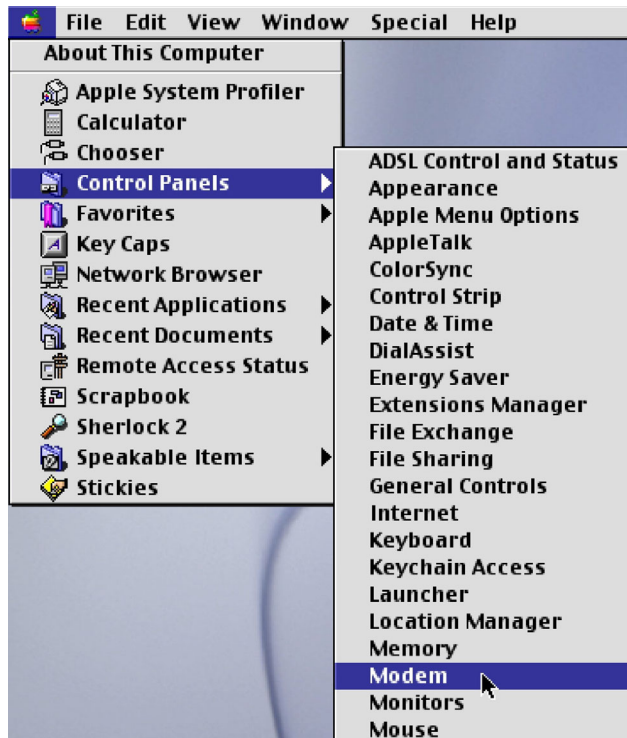
**Figure 2-2 TCP/IP Settings for RFC1483**

**Step 4.** Refer to section 3.1.1 for how to access the Control and Status interface. Use the **Connect** button (see section 3.2.4).

## 2.2 Configuring Your Mac for Making a PPPoA Connection

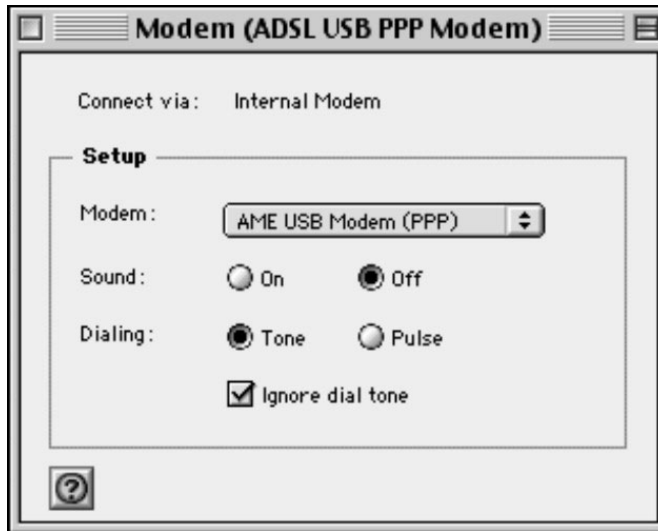
Use the following steps to configure your Macintosh when using a PPPoA driver. PPPoA is a dial-up connection, so after you configure the driver, you also have to create a dial-up connection to use. This is not necessary with RFC 1483.

**Step 1.** Click the Apple icon, **Control Panels** and then **Modem**.



**Figure 2-3 Path to Modem Configuration**

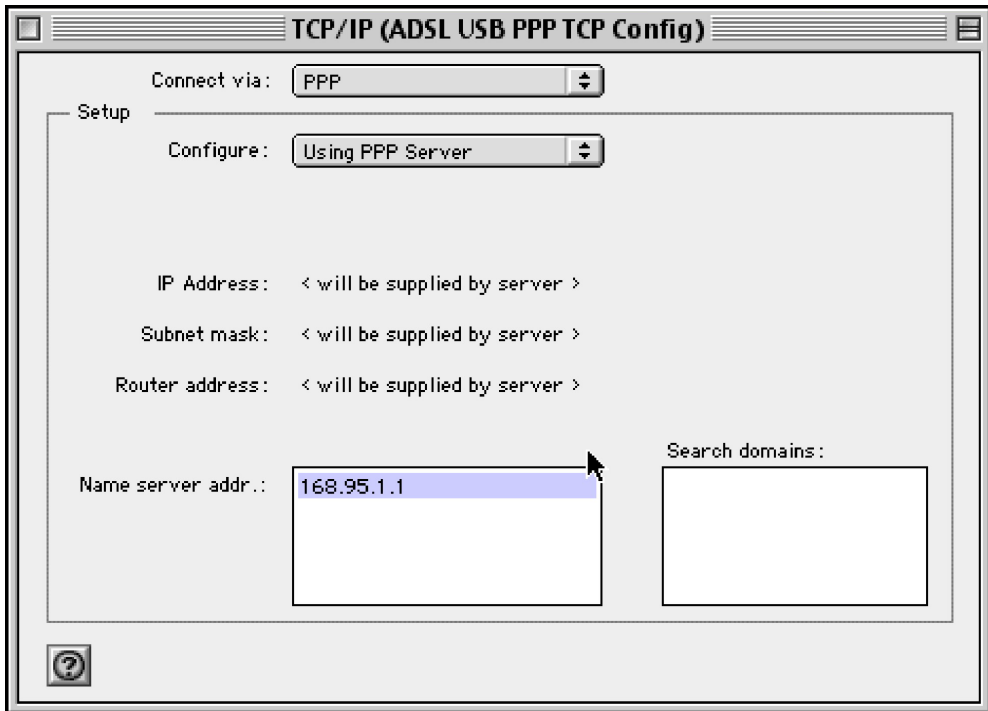
- Step 2.** Select **ADSL USB PPP** for the **Connect via** field. Select **AME USB Modem (PPP)** in the **Modem** field, **Off** in the **Sound** field, **Tone** in the **Dialing** field, and the **Ignore dial tone** check box.



**Figure 2-4 PPPoA Configuration**

- Step 3.** Click the Apple icon, **Control Panels** and then **TCP/IP** (refer to *Figure 2-1*).

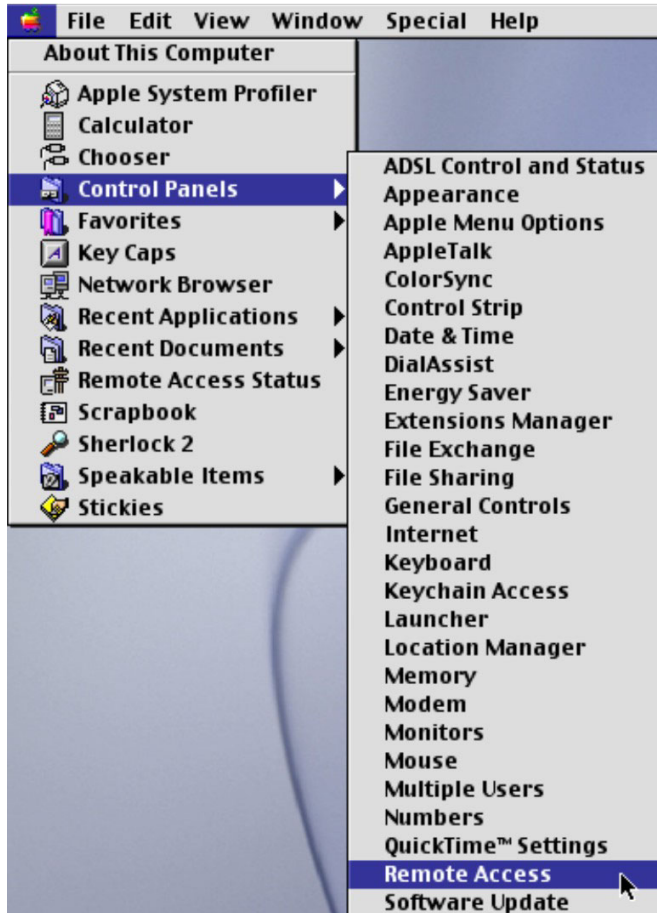
**Step 4.** Make sure that the **Connect via** field is set to **PPP** and the **Configure** field is set to **Using PPP Server** and close the window.



**Figure 2-5 TCP/IP Settings for PPPoA**



**Step 5.** Click the Apple icon, **Control Panels** and then **Remote Access**.



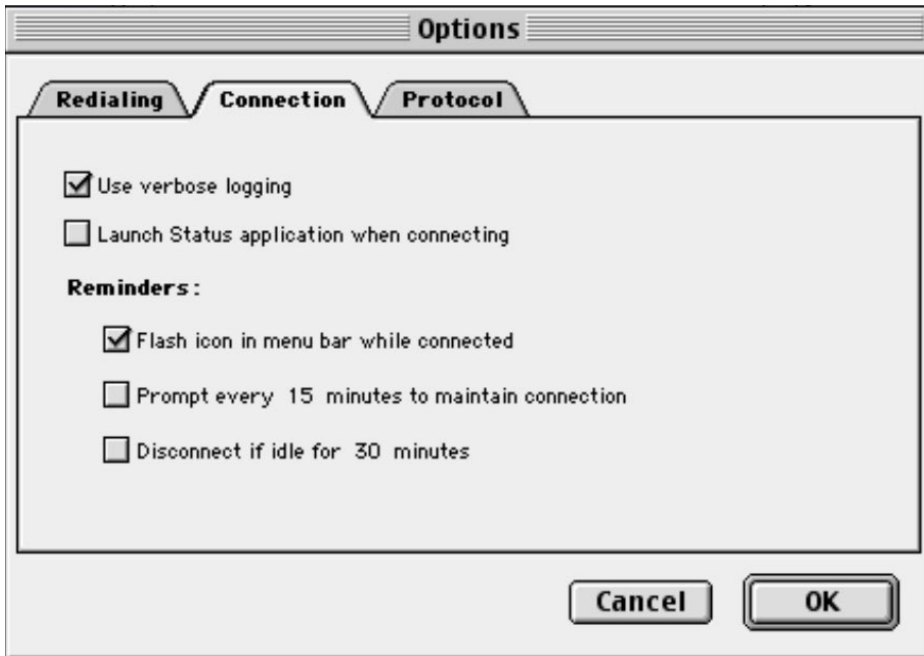
**Figure 2-6 Path to Remote Access Configuration**

**Step 6.** Click the **Options** button.



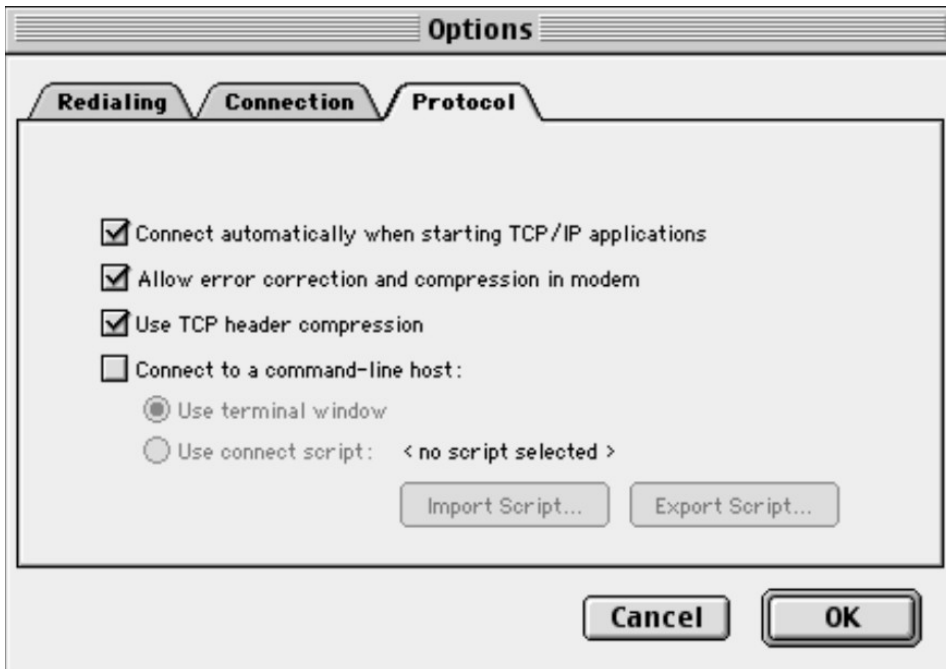
**Figure 2-7 Remote Access**

**Step 7.** In the **Connection** tab, select the **Use verbose logging**, and **Flash icon in menu bar while connected** check boxes. If you are using OS 8.6, go to the next step. Otherwise, click **OK** and go to section 2.3 to set up a dial-up connection.



**Figure 2-8 Remote Access: Connection Tab**

**Step 8.** With OS 8.6 only, click the **Protocol** tab and make sure that the **Use Protocol** field is set to **PPP**. Select the **Connect automatically when starting TCP/IP applications**, **Allow error correction and compression in modem** and **Use TCP header compression** check boxes. Click **OK**. Go to section 2.3 to set up a dial-up connection.



**Figure 2-9 Remote Access: Protocol Tab (OS 8.6 Only)**

## 2.3 PPPoA Dialup Connection Setup

Follow these steps to create a dial-up connection.

**Step 1.** Use one of the following methods to open **Remote Access**.

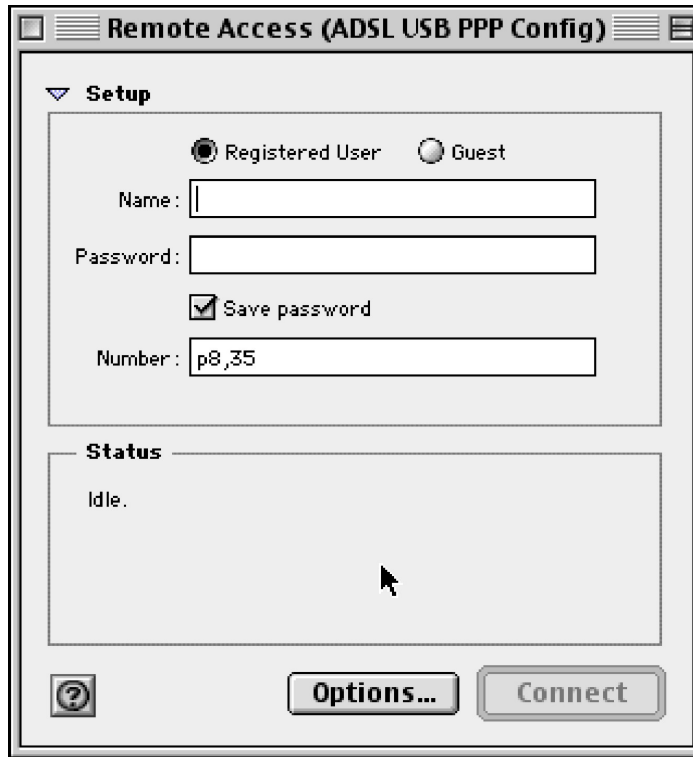
- Click the Apple icon, **Control Panels** and then **Remote Access** (see *Figure 2-6*).

- Double-click the **ADSL USB Modem Settings** shortcut on the desktop.



**Figure 2-10 Desktop Remote Access Icon**

**Step 2.** Enter the name and password that your ISP gave you.



**Figure 2-11 Initiate the Dial-up Connection**

**Step 3.** Refer to section 3.1.1 for how to access the Control and Status interface. Use the **Connect** button (see section 3.2.4).



# Chapter 3

## Control And Status

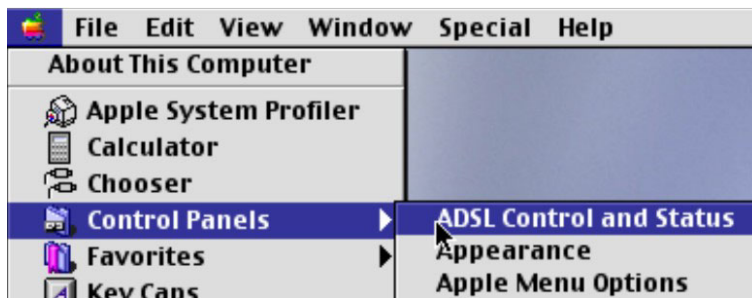
*This chapter introduces the Control and Status Application GUI.*

### 3.1 CSA

The CSA (Control and Status Application) displays information about your modem's status and performance, and also allows you to connect or disconnect an ADSL connection.

#### 3.1.1 Accessing the CSA

Click the Apple icon, **Control Panels**, **USB ADSL Control and Status**.



**Figure 3-1 Access Path to the CSA**

## 3.2 ADSL Control and Status Interface Screen

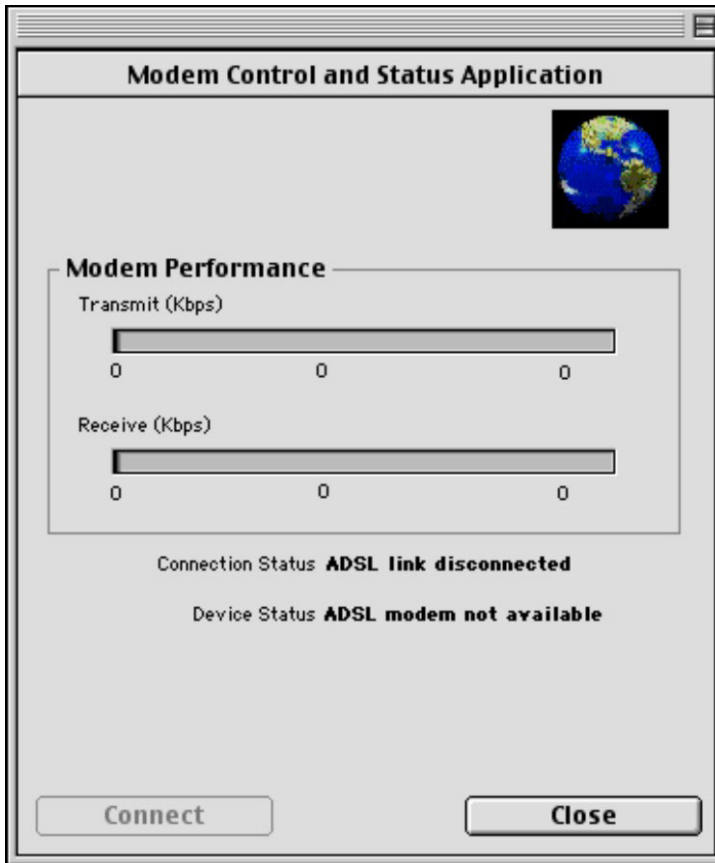


Figure 3-2 Control and Status Application

### 3.2.1 Modem Performance

Two bar graphs indicate the throughput rates. One indicates the transmit rate (upstream) of data being sent out from the modem and the second indicates the receive rate (downstream).

### 3.2.2 Connection Status

This field displays **ADSL link connected** when there is an ADSL connection. It displays **ADSL link disconnected** when there is not an ADSL connection.



### 3.2.3 Device Status

This field displays **ADSL modem available** when the modem is properly connected to the computer and the modem driver is installed. The field displays **ADSL modem not available** when the modem is not connected to the computer or the modem driver is not properly installed.

### 3.2.4 Connect

The connect/disconnect functions are controlled by the **Connect/Disconnect** button. The button is disabled when the modem is unavailable. This happens when the modem driver fails to communicate properly or is disabled.

The status of the modem determines the button text. **Connect** is displayed when the modem is not connected and not cycling in order to connect. **Disconnect** is displayed when the modem is connected.

### 3.2.5 Close

The **Close** button closes only the CSA interface screen and does not have any affect on the ADSL connection.



# Chapter 4

## Uninstalling Your Modem

*This chapter tells how to uninstall your modem hardware and software.*

### 4.1 Uninstalling the Hardware

Disconnect the USB cable from your Macintosh's USB port.

### 4.2 Uninstalling the Driver

Use the following steps to remove your modem's software driver.

---

**Save and close all other running programs before installing the modem driver.**

---

- Step 1.** Insert the included CD into the CD-ROM drive. An icon for the CD appears.
- Step 2.** Double-click the CD's icon.
- Step 3.** Double-click the Mac 8.9 folder.
- Step 4.** The Mac 8.9 folder contains two folders, one for RFC 1483 and one for PPPoA. Double-click the RFC 1483 folder if you need a RFC 1483 driver. Double-click the PPPoA folder if you need a PPPoA driver.
- Step 5.** The folder contains either the **USB ADSL Modem App** icon (for RFC 1483) or the **ADSL PPP Modem App** (for PPPoA) icon. Double-click the **USB ADSL Modem** (or **ADSL PPP Modem**) icon.

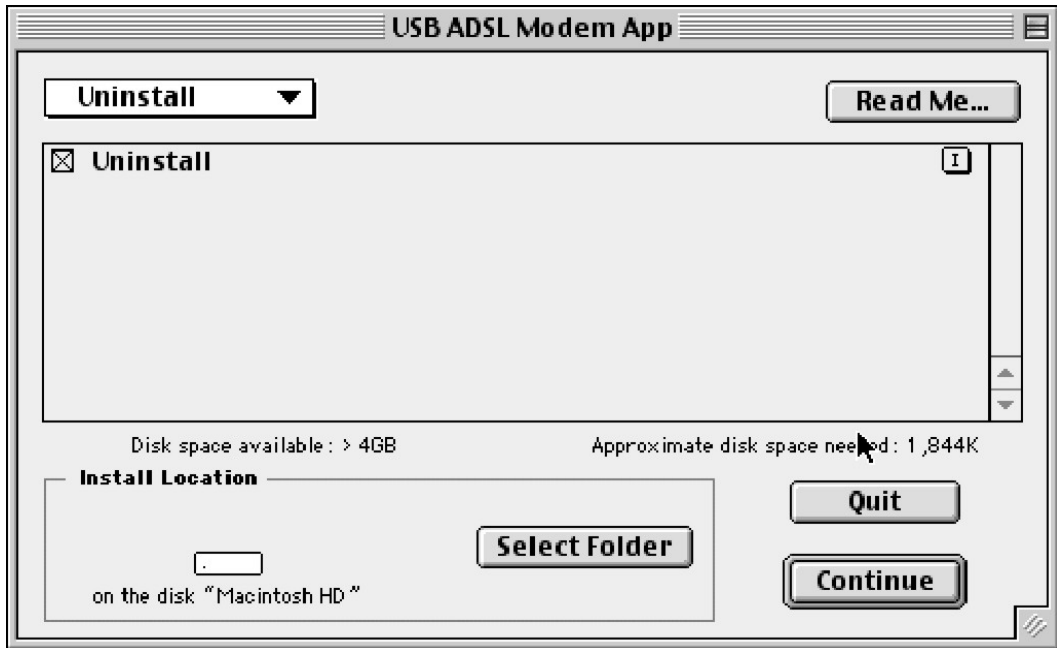


**Figure 4-1 USB ADSL Modem App Icon**



**Figure 4-2 ADSL PPP Modem App Icon**

**Step 6.** Select **Uninstall** in the upper left corner box. Click **Continue**.



**Figure 4-3 Select Uninstall**

**Step 7.** Make sure you have saved and closed all other running applications and click **Continue** in the screen that tells you to restart after you uninstall this driver.

**Step 8.** Click **Restart** to restart your computer and complete the uninstall.

# Chapter 5

## Troubleshooting

*This chapter covers potential problems and the possible solutions.*

**Table 5-1 Troubleshooting**

PROBLEM	CORRECTIVE ACTION
None of the LEDs turn on when I start the modem.	<p>Make sure your computer is turned on.</p> <p>Check the USB cable connections between the modem and your computer.</p> <p>Click the Apple icon, <b>Control Panels</b>. Install the software driver if <b>ADSL Control and Status</b> is not present.</p> <p>Carefully follow the instructions in this User's Guide to uninstall and reinstall the software driver.</p>
I cannot access the modem via my computer.	<p>Make sure the modem's USB port is connected to your computer's USB port.</p> <p>Disconnect the USB cable from the modem and reconnect it.</p> <p>Click the Apple icon, <b>Control Panels</b>. Install the software driver if <b>ADSL Control and Status</b> is not present. Make sure you restart your computer at the end of the installation process.</p>
I cannot connect to the Internet.	<p>Make sure the ADSL port is properly connected to the telephone wall jack.</p> <p>Use the <b>Connect/Disconnect</b> button in the <b>ADSL Control and Status</b> screen to reinitiate the ADSL connection.</p> <p>With PPPoA, make sure that you have configured your Macintosh for making a PPPoA connection and that you have entered the correct user name and password (see 2.2 and 2.3).</p> <p>Restart your computer.</p>



# Index

<b>C</b>	
Close Button.....	3-3
Compatibility and Compliance .....	x
Configuration .....	2-1
Connect Button .....	3-3
Connection Status .....	3-2
Connections.....	1-4
Contacting Customer Support .....	vi
Control and Status Application .....	3-1
Copyright .....	ii
Disclaimer .....	ii
Trademarks .....	ii
CSA.....	3-1
Customer Support .....	vi
<b>D</b>	
Device Status .....	3-3
Dialup Connection Setup .....	2-10
Downstream Data Rates.....	x
Driver Installation .....	1-2
<b>F</b>	
FCC.....	v
FCC Rules.....	v
Features.....	x
Federal Communications Commission (FCC)	
Interference Statement .....	v
<b>G</b>	
Glossary.....	x
<b>H</b>	
Hardware Installation.....	1-3
<b>I</b>	
Included CD.....	x
Information for Canadian Users.....	iv
Caution.....	iv
Note .....	iv
ISP Information .....	1-1
<b>L</b>	
LEDs.....	1-4
Limited Warranty.....	iii
<b>M</b>	
Macintosh Configuration .....	2-1
Microfilter.....	1-4
Modem Performance .....	3-2
<b>N</b>	
Needed Information .....	1-1
<b>O</b>	
Online Registration.....	iii
Operating Systems .....	1-1
<b>P</b>	
Power Supply.....	x
PPPoA.....	2-3

R		Troubleshooting.....	5-1
Related Documentation.....	x	U	
Removing.....	4-1	Uninstalling .....	4-1
Repair.....	iii	Upstream Data Rates .....	x
RFC 1483.....	1-2	USB as Power Source.....	x
RFC1483.....	2-1	USB Compliance .....	x
RJ-11.....	x	User Interface Screens.....	3-1
S		W	
Service .....	iii	Warranty.....	iii
Support Disk .....	x	Z	
Syntax Conventions .....	x	ZyXEL Contact Information .....	vi
T		ZyXEL Limited Warranty	
Table of Contents.....	vii	Note .....	iii
Telephone Company Information.....	1-1	ZyXEL Web Site .....	x