

NSA-2400

Network Storage Appliance

Quick Start Guide

Version 1.00

6/2006

Edition 1

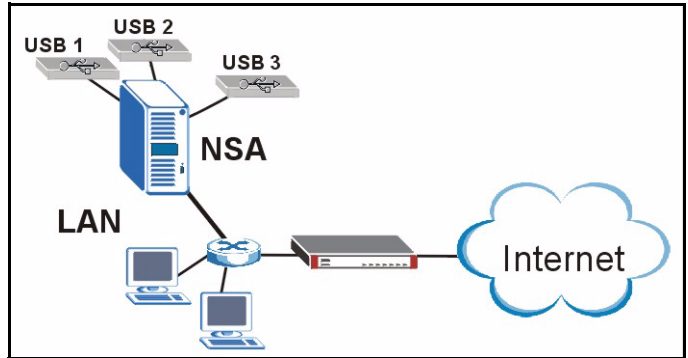
The logo for ZyXEL, featuring the word "ZyXEL" in a bold, blue, sans-serif font. The "Zy" is in a lowercase, italicized style, while "XEL" is in uppercase. The letters are closely spaced and have a slight shadow effect.

Overview

The NSA-2400 (the NSA) is a network storage device for file sharing, data backup and data protection in small (home) offices and/or medium-sized offices.

This guide shows you how to:

- 1 Install hard drives
- 2 Make NSA Connections
- 3 Access the NSA using NDU (NSA Discovery Utility) or your web browser
- 4 Set up the NSA using the wizard
- 5 Map the NSA to a network drive from any computer



Note: See the User's Guide for more details and specifications on the NSA.

Requirements

You need the following before you start:

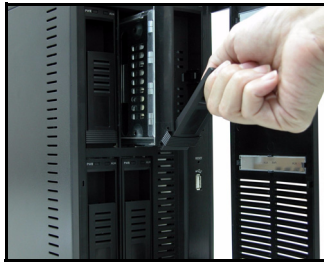
- NSA
- Included CD containing the NDU (NSA Discovery Utility) and Genie Backup Manager
- Power cord and power supply (external)
- 8-wire Ethernet cable for Gigabit Ethernet
- Up to four SATA-1 (Serial Advanced Technology Attachment) compatible hard disk(s) with 15-pin SATA power connectors
- Screwdriver to install the hard disks in the disk trays
- USB cable (optional: you only need this if you want to expand storage capacity by connecting compatible USB drives (version 2))
- Computer with Network Interface Card (NIC) and TCP/IP installed
- Network access device such as a switch or hub.

1 Install Hard Drives

Note: Hard drives are NOT hot swappable. The NSA must be turned off before you remove or install hard drive(s).

- 1 Pull the tab on the left of the front door of the NSA to open it.

- 2 Pull out the latch and grip the sides of the tray to remove disk tray 1. Be careful not to break the latch. Disk bay 1 is labelled on your NSA (the top-left bay).



- 3 Place the disk tray on a flat surface with the panel facing up. Place a hard disk with the screw holes facing up on the same surface and slide it into the disk tray. Secure it with the screws as shown.



- 4 Push the top of the tray back into NSA disk bay 1 until it snaps into place and push the latch up as shown.



- 5 Repeat steps 1 to 3 for other hard drives that you may have.

2 Make the NSA Connections

- 1 Connect the Ethernet port on the rear of the NSA to a hub, switch, or router on your network using an Ethernet cable. Use an 8-wire Ethernet cable for Gigabit connections.



- 2 Connect one end of the power cord to the power socket on the rear of the NSA and the other end to the external power supply. Connect the external power supply to a power outlet.



- 3 Turn on the power by pressing in the power button on the front of the NSA. Look at the front panel lights. The **PWR** light turns steady green. The **SYS** light turns steady green after the NSA has booted successfully (it takes about 50 seconds). The **LAN** light turns on if the NSA Ethernet port is properly connected to your network. It blinks while transmitting or receiving traffic.

Note: To turn off the NSA, press the power button in once only. The SYS light blinks red indicating the NSA is shutting down.



3 Access the NSA

You can access the NSA in one of two ways: using the NDU (NSA Discovery Utility) or directly entering the NSA IP address into your web browser.

3.1 Use the NDU to Discover the NSA IP Address

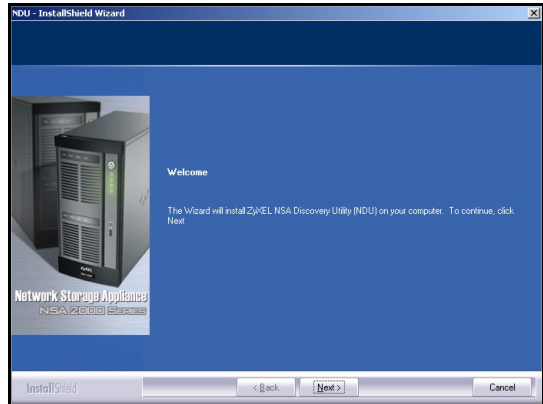
Use the NDU (NSA Discovery Utility) on a Windows computer if your network has a DHCP server that will assign the NSA an IP address and/or if you have many NSAs in your network.

Note: The Genie Backup program uses the same network port as the NDU to discover the NSA. To avoid a port conflict, do not run the Genie Backup at the same time as the NDU.

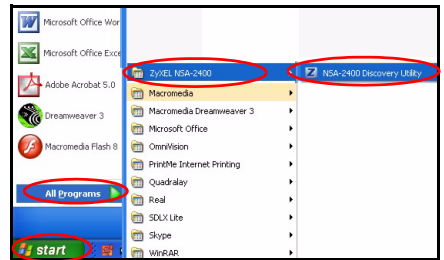
- 1 Insert the included CD into your CD-ROM drive. The next screen should automatically display (autorun). Click the **Setup** icon.



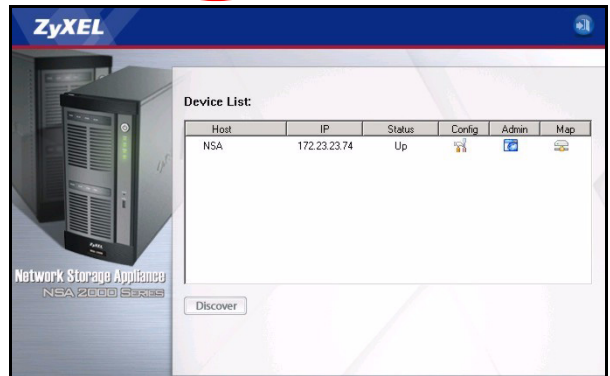
- The NDU installation wizard begins. Follow the installer instructions. Click **Finish** to complete the installation.



- In Windows XP, click **start, All Programs, ZyXEL NSA-2400, ZyXEL NSA-2400 Discovery Utility** to run the NDU. For other Windows operating systems, procedures should be similar. If your computer has more than one network card, then you will first be prompted to select a network interface card.



- The NDU main screen appears listing all hostnames, IP addresses and status of all NSAs in your network. Click the icon under **Admin** to see the main web configurator screen as shown in [Section 4 on page 6](#). (If you want to change the NSA IP address, click the icon under **Config**. If you want to map the NSA to a Windows network drive, click the icon under **Map** (see [Section 5 on page 14](#)). To refresh the screen, click **Discover**.)

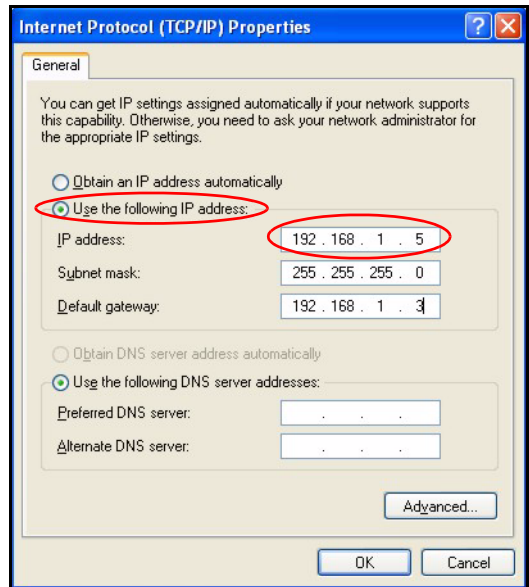


3.2 Direct Access Via Web Browser

If the NSA cannot get an IP address from a DHCP server, then the default IP address of the NSA reverts to 192.168.1.3. Before directly entering the NSA IP address into your web browser, you must make sure that your computer and the NSA are in the same subnet. This section shows you how to set your Windows NT/2000/XP computer to have an IP address in the same subnet as the NSA. Refer to your User's Guide for detailed IP address configuration for other operating systems.

- In Windows XP, click **start, Control Panel**. In Windows 2000/NT, click **Start, Settings, Control Panel**.
- In Windows XP, click **Network Connections**. In Windows 2000/NT, click **Network and Dial-up Connections**.

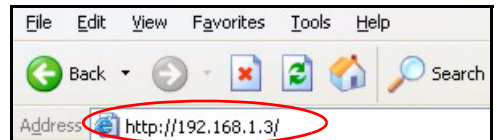
- 3 Right-click **Local Area Connection** and then click **Properties**.
- 4 Select **Internet Protocol (TCP/IP)** (under the **General** tab in Win XP) and click **Properties**.
- 5 The **Internet Protocol TCP/IP Properties** screen opens (the **General** tab in Windows XP).
- 6 Select the **Use the following IP address** and enter an IP address from 192.168.1.1 to 192.168.1.254 excluding 192.168.1.3 (the NSA) and any other IP addresses in this range already being used by a device on your network.
- 7 Click **OK** to close the **Internet Protocol (TCP/IP) Properties** window.
- 8 Close the **Local Area Connection Properties** window and then the **Network Connections** screen.



- 9 Launch your web browser and enter “192.168.1.3” as the web site address.

4 NSA Wizard Setup

- 1 Access the NSA using the NDU or web configurator directly.
- 2 When you first access the NSA web configurator, you may see this screen telling you that this is a secure connection using HTTPS. Click **OK** to continue.



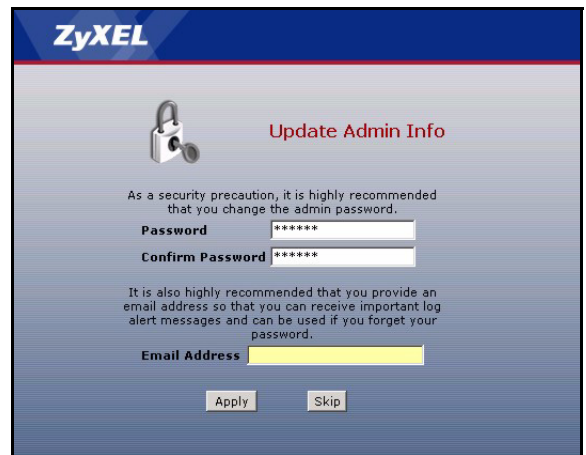
3 The web browser client uses certificates to authenticate the NSA. The default NSA certificate will most likely show a name and certification authority mismatch; however encryption is still performed. Click **Yes** to proceed.



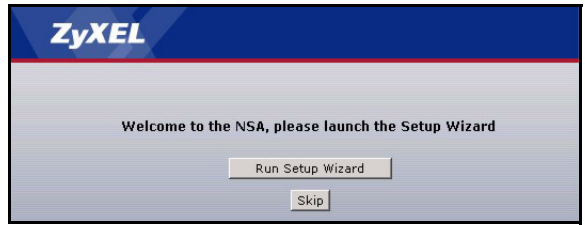
4 When you access the NSA web configurator, the login screen appears. The default user name and password are 'admin' and '1234' respectively. Click **Login**.



5 It is recommended that you change the default password. You can also enter an e-mail address to which NSA alerts can be sent here (you must enter e-mail server information in the wizard or **Log Alert** screen). Click **Apply** to save your changes and go to the next screen or ignore this screen and click **Skip** to go to the next screen.



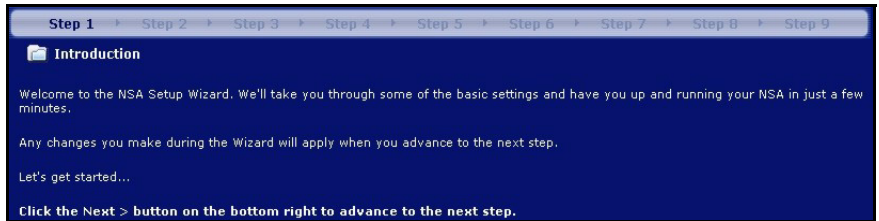
- 6 The first time you access the NSA web configurator, you are prompted to run the setup wizard. Click **Run Setup Wizard**.



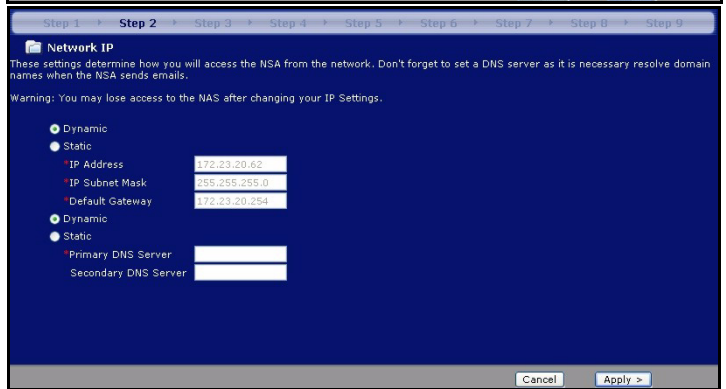
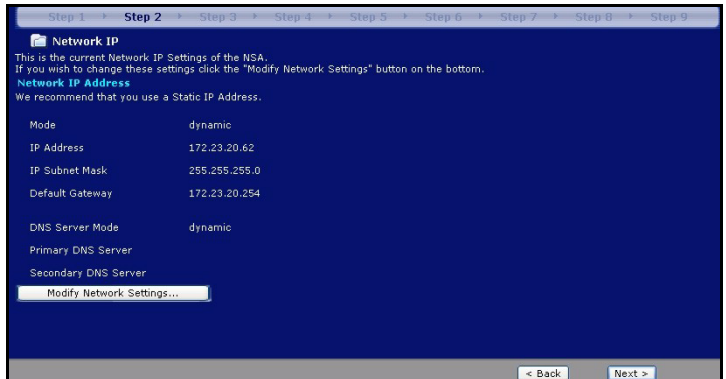
4.1 Setup Wizard

Each time you click **Next** in the wizard, your settings are saved to the NSA. Click **Back** to return to a previous screen in the wizard.

- 1 Click **Next** to begin the wizard.

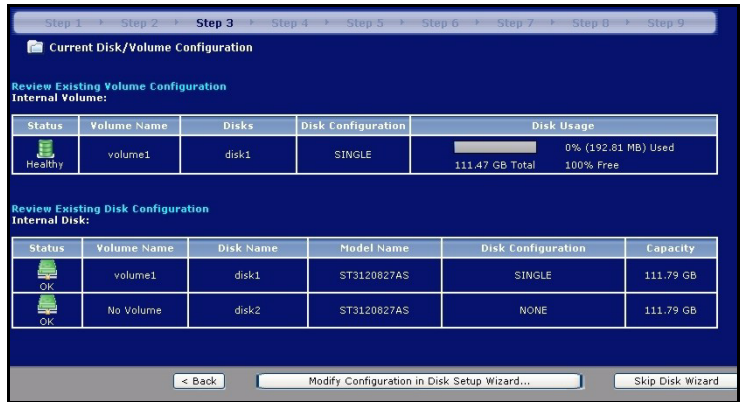


- 2 If you want to change the network settings of the NSA, click **Modify Network Settings**. You can also do this using the NDU (recommended). If you change the IP address, then you will have to use the new IP address to access the web configurator again. Click **Next** to continue.

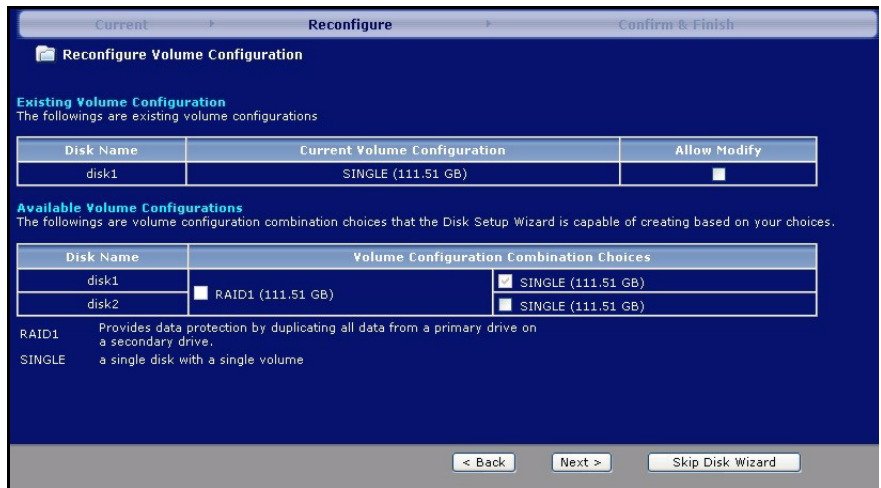


4.1.1 Disk Setup Wizard

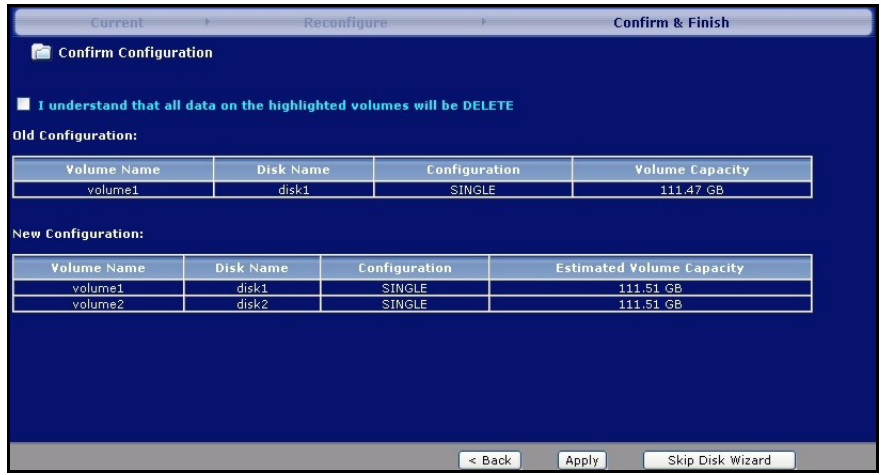
3 This screen is the **Disk Setup Wizard** (this screen can be accessed separately from the main NSA screen). Skip this wizard to have the NSA use the current or default volume configuration.



- Choose **RAID 1** if you have two or four disks in the NSA; half the disk space is used for data backup. If you have four disks, you could choose **RAID 5** where data parity and striping allow you to recover data even if one disk fails. Choose **SINGLE** if you have just one disk or have multiple disks but don't need disk backup. Click **Next** to continue (without saving anything yet).

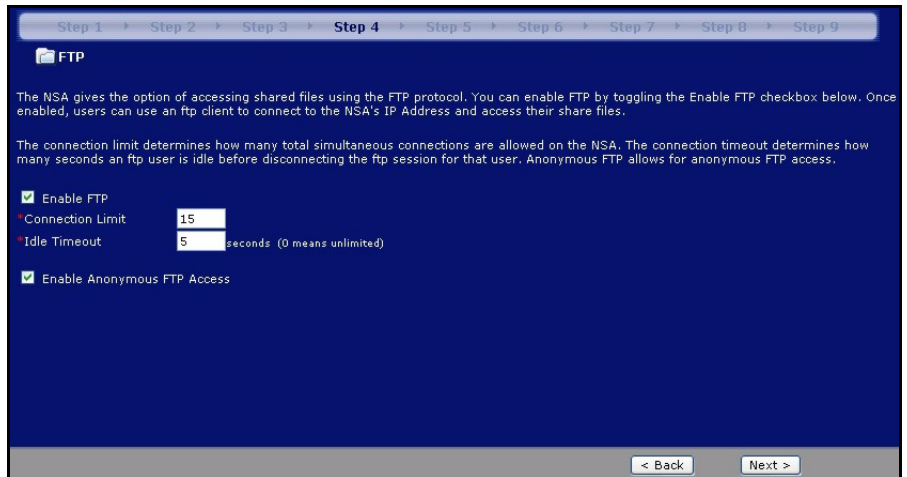


- Disk data is lost if you reconfigure a volume. Select the **I Understand...** checkbox and then click **Apply** to save the **Disk Setup Wizard** settings. You now return to the main installation wizard.



4.1.2 Return to Main Wizard

- The next screen allows you to enable FTP on the NSA. You can use FTP and/or Windows explorer (CIFS) to transfer files to or from the NSA. Select **Enable Anonymous FTP Access** to allow any user to log into the NSA using an 'FTP' user name or 'anonymous' without giving a password. If you clear **Enable Anonymous FTP Access** then you must create a user account and associated password. Use that username and password to log into the NSA via FTP.



- 5 You must configure e-mail address(es), an e-mail server and how often the NSA should send alerts in this screen. An alert is an event, such as hard disk failure, that may require your immediate attention.

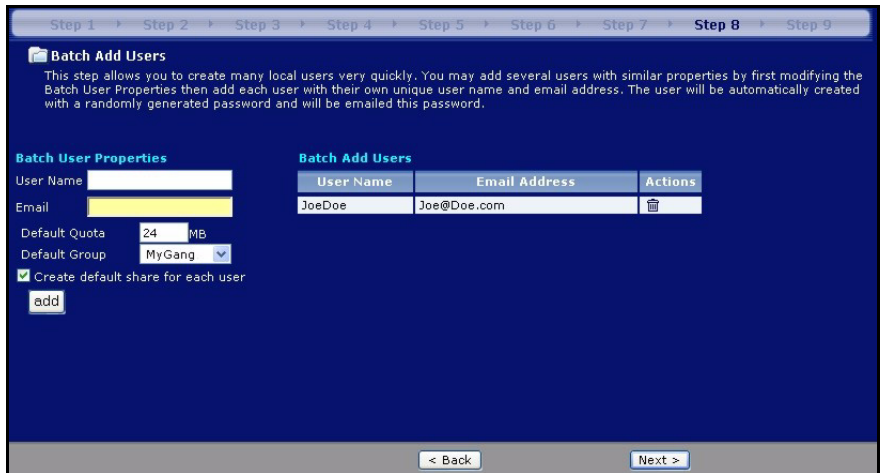
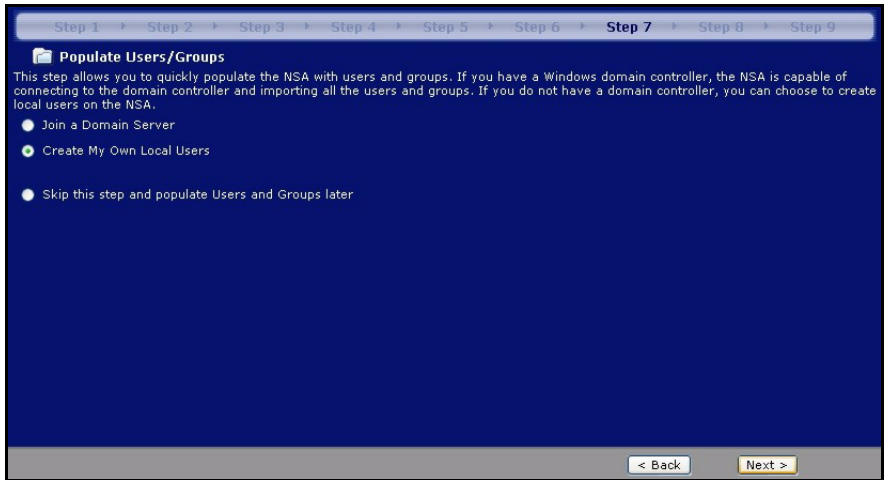
The screenshot shows the 'Log Alert Email Settings' configuration screen. At the top, a progress bar indicates the current step is Step 5. The title is 'Log Alert Email Settings'. Below the title, there is a paragraph explaining that the NSA can send email log alerts for major problems and that it's important to test the email function. Another paragraph states that for proper email sending, an SMTP server must be used, and some require authentication. The 'Send Email Alerts' section has two radio buttons: 'Never' (unselected) and 'Whenever a Critical Log Message Occurs' (selected). Below this, there is a checked checkbox 'also in a' followed by a dropdown menu set to 'weekly' and the text 'log summary email'. The 'Primary Email Address', 'Secondary Email Address', and 'Outgoing Mail Server (SMTP)' fields are empty text boxes. There are two checkboxes: 'Use SMTP Authentication' (unchecked) and 'After applying settings, Send a test e-mail' (unchecked). At the bottom right, there are '< Back' and 'Next >' buttons.

- 6 Select a time server and a time zone in this screen. The NSA updates its date and time from the time server. This time is used in NSA log and alert time stamps. The NSA time and date must be the same as the time and date on the external domain controller if the NSA is using one to import users and groups.

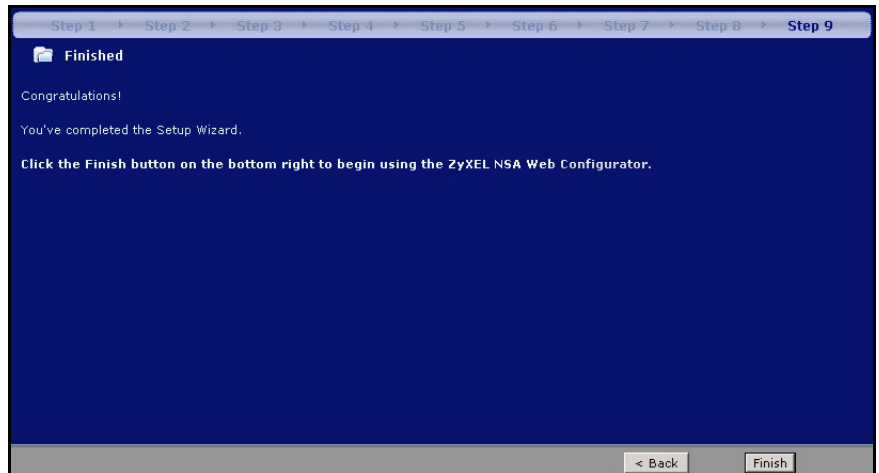
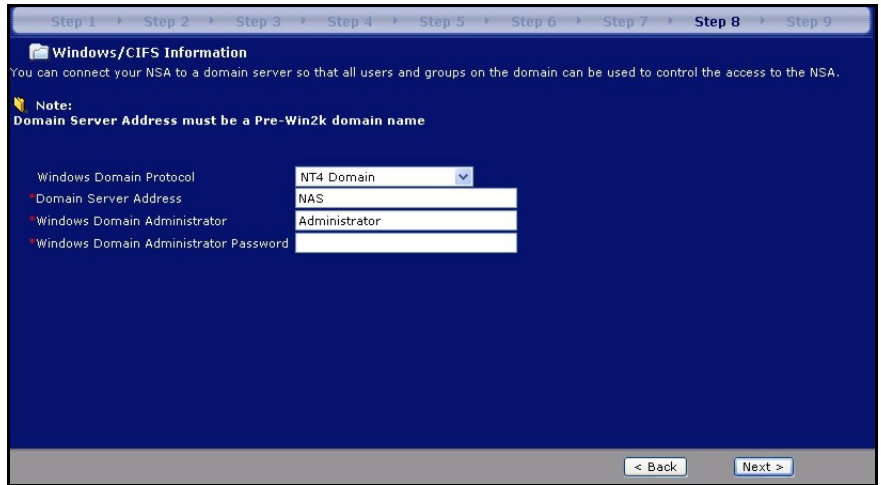
The screenshot shows the 'Date Time' configuration screen. At the top, a progress bar indicates the current step is Step 6. The title is 'Date Time'. Below the title, there is a paragraph explaining that the NSA's time settings can be modified to synchronize with a time server or set manually. The 'Current System Date Time Setting' section displays: Current Time (hh:mm:ss) as 18:14:58, Current Date (mm/dd/yyyy) as 1/26/2006, and Current Time Zone as (GMT+8:00) Taipei. The 'Time Server' section has a checked checkbox 'Automatically Synchronize Time with a Time Server' and a dropdown menu for 'Time Server Address' set to 'a.ntp.alphazed.net'. At the bottom, there is a dropdown menu for 'Time Zone' set to '(GMT+8:00) Taipei'. At the bottom right, there are '< Back' and 'Next >' buttons.

7 Add users that may access the NSA in this screen. The NSA can import users from an external domain controller or you can add users on the NSA. If you have an external domain controller, select **Join a Domain Server**. To create users on the NSA, select **Create My Own Local Users**.

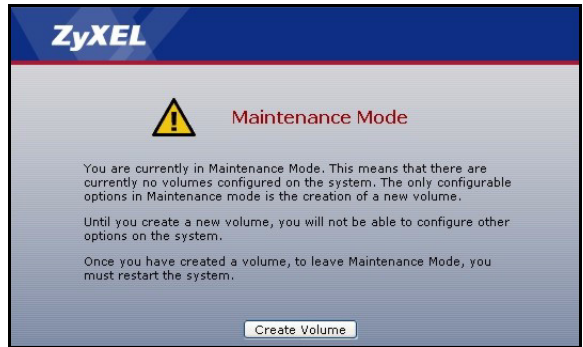
- Local Users: Click **add** to configure each new local user and then click **Next** to mass create them all on the NSA. Enter a user name from one to 32 alpha-numeric characters; the first character must be alphabetical. See your User Guide for user name details. If you return to this screen later, you will not see the users you added to the NSA in the screen but the users have been added to the NSA.



- Domain: Choose **NT4 Domain** if your server uses a Windows NT operating system. Choose **Active Directory Domain** if it uses a Windows 2000 or later operating system. Type the IP address of the Windows server domain controller, the Windows domain administrator (**Administrator** is the default) and an associated password. You can use a domain name if the server uses an operating system earlier than Windows 2000,
- 8 Click **Finish** for the NSA to complete the configuration. Restart the NSA if prompted.

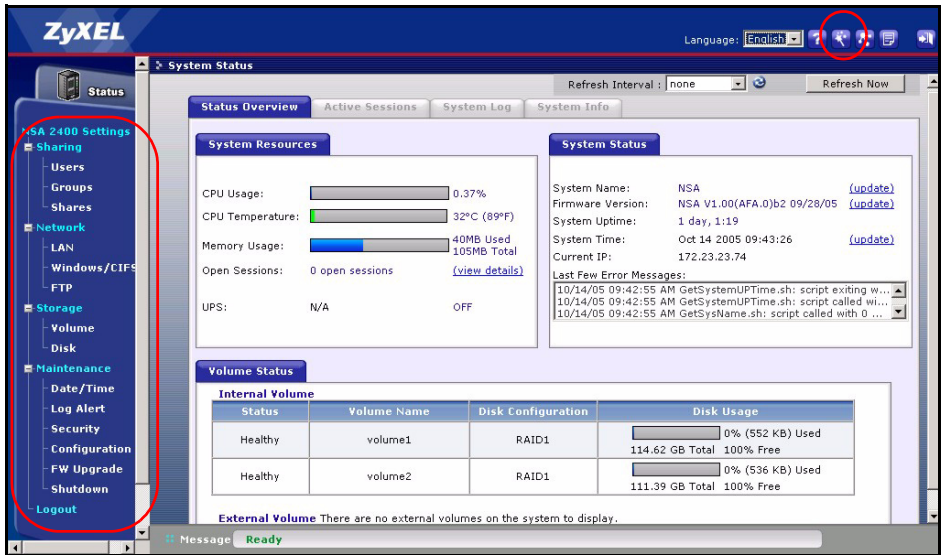


- If you deleted the default volume and didn't create another volume, or you don't have an internal hard disk installed, you will see the following **Maintenance Mode** screen. In **Maintenance Mode**, you **MUST** create an internal volume.



Note: You must install at least one hard disk and create an internal volume before you can use external USB hard drive(s) with the NSA.

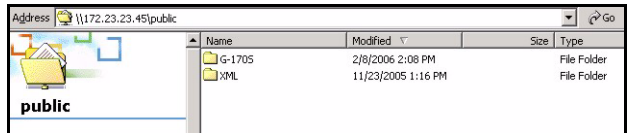
- 9 The next time you log into the NSA, you go directly to the **Status Overview** screen. You may access the wizard again by clicking on the icon in the top-right of the screen as shown. Access any of the menus in the navigation panel on the left for more advanced configuration.



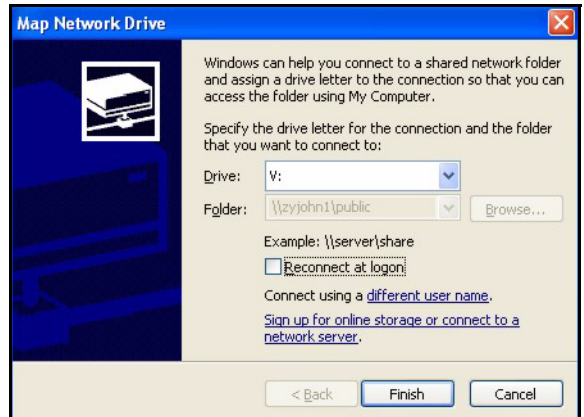
Note: See your User's Guide for more information on these advanced screens.

5 Map the NSA to Your Computer Network Drive

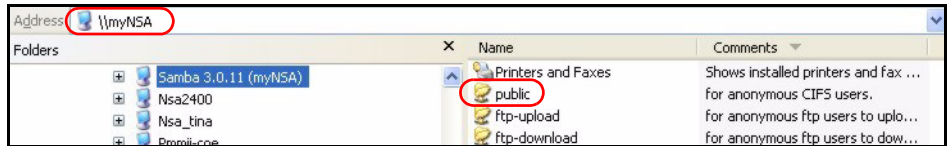
Mapping a share (a folder where you store data) on the NSA to a Windows network drive makes it easy for Windows users to transfer files to and from the NSA (using CIFS). Click the MAP icon in the NDU (see [Section 3.1 on page 4](#)) to display the NSA public folder in Windows Explorer.



Click **Tools, Map Network Drive**. Select the network drive that you want to map NSA to from the **Drive** list box and browse to the share on the NSA (**Public** is the only one available if you have not created shares on the NSA yet). You can then simply drag files from/to your local computer's drives to or from this network folder.



Alternatively (from another computer that does not have NDU installed for example), open Windows Explorer and type two back slashes followed by the NSA system name or IP address.



6 Troubleshooting

PROBLEM	CORRECTIVE ACTION
None of the LEDs turn on when you connect the power.	<p>Make sure that the NSA is turned on.</p> <p>Check that there are no loose cable connections, that there are no faulty cables and that Ethernet cable connections do not exceed 100m.</p> <p>Make sure that you have the power cord connected to an active power source.</p> <p>If the LEDs still do not turn on, you may have a hardware problem. In this case, you should contact your local vendor.</p>
Cannot access the NSA from my computer.	<p>Check the Ethernet cable connection from your network to the NSA.</p> <p>If the NSA's IP address has changed, then enter the new one as the website address.</p> <p>Make sure your computer's IP address is in the same subnet as the NSA's IP address (see section Section 3.2 on page 5).</p> <p>Ping the NSA from your computer. Make sure your computer's Ethernet adapter is installed and functioning properly. In a (Windows) computer, click Start, (All) Programs, Accessories and then Command Prompt. In the Command Prompt window, type "ping" followed by the NSA's IP address (192.168.1.3 is the default) and then press [ENTER].</p> <p>Use Internet Explorer 6.0 (and later) or Firefox 1.07 (and later) with JavaScript enabled.</p> <p>Make sure you enter the user name and password correctly (these fields are case sensitive).</p>

Viewing Your Product's Certifications

- 1 Go to www.zyxel.com.
- 2 Select your product from the drop-down list box on the ZyXEL home page to go to that product's page.
- 3 Select the certification you wish to view from this page.