

ZyXEL



Best Partner of Your Multi-Function Printer



- Share a Printer without Sharing Your PC to Multiple Users
- Compatible with Multi-Function Printers*
- Auto-connected Print Job at Any Time
- Real Time Ink and Paper Status Monitoring
- Easy Installation with Multilingual Support



Benefits

Supports Latest MFP and Older Printers

With print, fax, scan and card reader features in one machine, multi-function printers (MFP) enable SOHO/home users to enjoy the all-in-one convenience at a low budget. As most MFPs come with only USB connectors and are not network-ready, ZyXEL's NPS-520 MFP print server can be used to add USB and Ethernet interfaces. A MFP or printer connected to the NPS-520 MFP print server is available to all network users without a dedicated PC as the printer spooler.

Fast Setup and Auto Printing

It takes less than 5 minutes to setup an NPS-520. With "Auto Connect" and "Auto Release" functions activated, all users on the network can access the MFP and printer easily without extra wiring. This is a perfect solution for home or other low-budget network users.

Small, Portable and Slick Design

Designed for home offices with limited space, the compact NPS-520 has slick exterior and comes with wall-mounting housing design for your convenience. On hot spots or other places where printer sharing is needed, the portable design of NPS-520 offers a transparent solution to users; and since it's as small as a power adapter, users can even carry it effortlessly when traveling.

Printer Sharing for Windows, Mac OS, UNIX and Linux

In addition to Windows, the NPS-520 also enables printer sharing among different operating systems like Mac OS, UNIX and Linux. Users can take advantage of their favorite applications freely on different platforms and enjoy printer sharing that NPS-520 offers.

* For the latest list of compatible printer models, please refer to the product page at www.zyxel.com

MFP Print Server

NPS-520

PRINT SERVER



Specifications

System Specifications

- Microsoft Windows 98 (SE), Windows 2000, Windows XP, Windows ME, Windows 2003, Unix/Linux, MAC OS

Hardware Specifications

Interface

- 1 x USB 2.0 Type A Print Port
- 1 x 10/100M RJ-45 (Auto-MDI/MDI-X)

Reset Button

- Reset/Reset to factory default

LED

- LAN: Blue
- Status: Blue
- Ready: Blue

Power Adapter

- 7 VDC/0.5 A switching adapter

Physical Specifications

- Dimensions: 76.5 (W) x 57 (D) x 25 (H) mm
- Weight: 62 g

Environmental Specifications

- Temperature: 0°C ~ 50°C
- Humidity: 20% ~ 95% RH Non-condensing

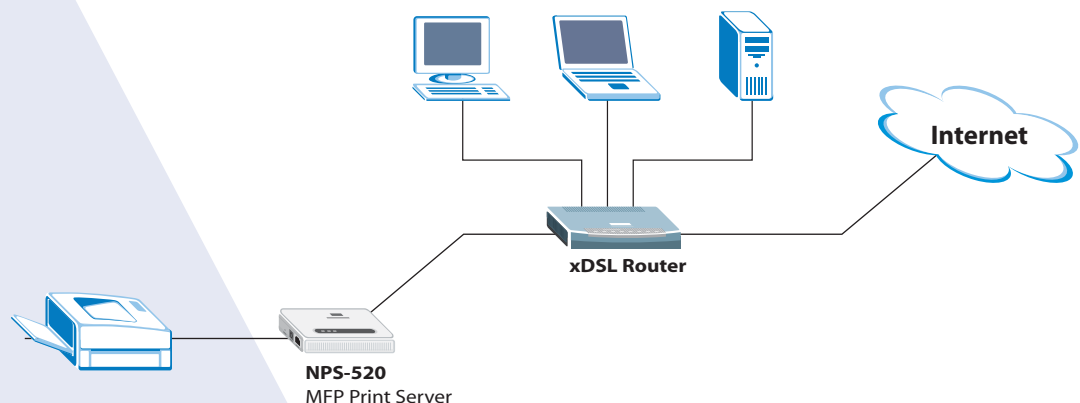
Certification

- EMI: CE, FCC part 15B, C-tick

Compatibility List

Brand Name	Printer Model				
HP	Laser Jet series	PSC series	Office Jet series	Deskjet series	CLJ series
	Business series	PhotoSmart series			
EPSON	CX4700	R3xx series	RX series	Aculaser series	DLQ series
	EPL series	Stylus series	PictureMate series	PHOTO 4990 Scanner	
CANON	MPC series	PIXMA series	ixxx series	S series	C series
	i series				
LEXMARK	P series	X series	E series	C series	
Brother	MFC series	HL series			
Konica Minolta	1380MF	2480			
Samsung	SF-565P	SCX series	ML series		
DELL	944				
BenQ	CM3000				

Application Diagram



For more product information, visit us on the web www.ZyXEL.com