

Dimension GS-1116/GS-1124

16-port/24-port Unmanaged Gigabit Ethernet Switch with 2 Mini-GBIC Slots



Recommended for

- Small and Medium-sized Business that want to upgrade overall network performance from fast Ethernet (100M) to Gigabit Ethernet (1000M) on the current cabling
- Small and Medium-sized Business looking for a cost-effective Gigabit switch to desktops
- Small and Medium-sized Business looking for Gigabit switch for server farm application
- Businesses looking for minimal network management effort and reduced expenses; truly Plug-and-Play and no configuration required

Features

Standard Compliance

- IEEE 802.3 10Base-T Ethernet
- IEEE 802.3u 100Base-Tx Ethernet
- IEEE 802.3z 1000Base-T Ethernet
- IEEE 802.3z Gigabit Ethernet
- IEEE 802.3x Flow control
- IEEE 802.1p Class of service

Performance

- 32Gbps forwarding bandwidth for GS-1116, 48Gbps forwarding bandwidth for GS-1124, non-blocking switching fabric
- 1488000pps forwarding rate for 1000Base-T port, 148800pps forwarding rate for 100Base-Tx port

- Wire-speed performance
- 4K MAC address entries
- 2Mbits memory buffer

Traffic Management

- IEEE 802.1p CoS
- Two priority queues
- Support Jumbo Frame
- Broadcasting storm control
- IEEE 802.3x flow control

Gigabit Connectivity

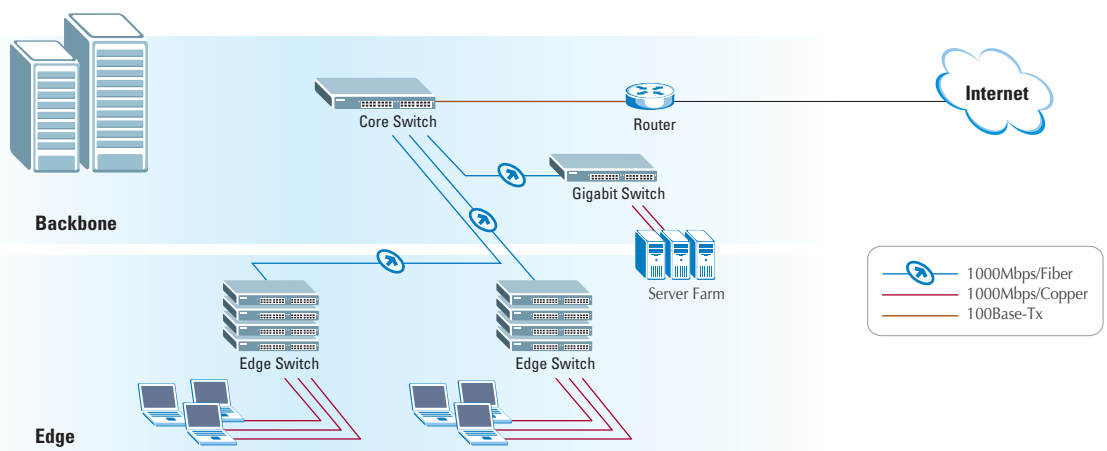
- 16 1000Base-T ports (RJ-45) for GS-1116, 24 1000Base-T ports (RJ-45) for GS-1124

- Two mini-GBIC slots for fiber uplink or server connection, longer loop reach and more reliability (shared with 1000Base-T copper port)

Network Cabling

- 100BASE-TX: 2-pair UTP/STP Cat. 5 cable EIA/TIA-568 (100 m)
- 1000Base-TX: 4-pair UTP/STP Cat. 5 cable EIA/TIA-568 (100 m)
- All copper ports are auto-crossover (auto-MDI-X)

Application Diagram



Feature Matrix

Dimension Unmanaged Switch

	Fast Ethernet Switch			Gigabit Switch	
	ES-1124	ES-1024A	ES-1016A	GS-1124	GS-1116
Port Number 10/100 RJ45	24	24	16	--	--
Port Number 100/1000	2x1000Base-T	--	--	24x1000Base-T	16x1000Base-T
Gigabit Fiber	2xmini-GBIC (shared)	--	--	2xmini-GBIC (shared)	2xmini-GBIC (shared)
802.3/802.3u Compliant	•	•	•	•	•
802.1p CoS	•	•	•	•	•
Jumbo Frame	--	--	--	•	•
All Ports MDI/MDI-X	•	•	•	•	•
full/half Duplex	•	•	•	•	•
Auto Negotiation	•	•	•	•	•
VLAN packet pass through	•	•	•	•	•
MAC Address Table	8K	4K	4K	4K	4K
Switching Capability	8.8Gbps	4.8Gbps	3.2Gbps	48Gbps	32Gbps
Packet Buffer	2.5Mbit	1.25Mbit	1.25Mbit	2Mbit	2Mbit
Dimension	440 x 161 x 44	440 x 120 x 44	440 x 120 x 44	440 x 224 x 44	440 x 224 x 44
W x D x H (mm)	(1U, 19")	(1U, 19")	(1U, 19")	(1U, 19")	(1U, 19")
Rack mountable	•	•	•	•	•
Internal Switching Power	•	•	•	•	•

Specifications

Hardware Specification

- Connectors
 - 16/24 100/1000 RJ-45 ports, auto-negotiation and auto-crossover
 - 2 mini-GBIC slots, SFP
- 19" in width for rack-mounted
- Power Supply
 - Input Voltage 100~ 240 VAC, 50/60Hz
 - Max power rating: 69Watt/GS-1124; 47Watt/GS-1116

Physical Specification

- Dimensions: 440(L) x 161(D) x 44(H) mm
- Weight: 3 kg (GS-1116); 3.2 kg (GS-1124)

Operating Environment

- Operating temperature: 0 ~ 45°C
- Storage temperature: -25 ~ 70°C
- Operating humidity: 10% ~ 90%, non-condensing



Corporate Headquarters
ZyXEL Communications Corp.
 Tel: +886-3-578-3942
 Fax: +886-3-578-2439
 Email: sales@zyxel.com.tw
 http://www.zyxel.com
 http://www.zyxel.com.tw

Denmark
 Tel: +45 39 55 07 00 Fax: +45 39 55 07 07
 Email: sales@zyxel.dk
 http://www.zyxel.dk

Finland
 Tel: +358-9-4780 8400 Fax: +358-9-4780 8448
 Email: sales@zyxel.fi
 http://www.zyxel.fi

France
 Tel: +33 (0)4 72 52 97 97 Fax: +33 (0)4 72 52 19 20
 Email: info@zyxel.fr
 http://www.zyxel.fr

Germany
 Tel: +49 2405 6909 0 Fax: +49 2405 6909 99
 Email: sales@zyxel.de
 http://www.zyxel.de

North America
 Tel: +1-800-255-4101, +1-714-632-0882
 Fax: +1-714-632-0858
 Email: sales@zyxel.com
 http://www.us.zyxel.com

Norway
 Tel: +47 22 80 61 80 Fax: +47 22 80 61 81
 Email: sales@zyxel.no
 http://www.zyxel.no

Spain
 Tel: +34 902 195 420 Fax: +34 913 005 345
 Email: sales@zyxel.es
 http://www.zyxel.es

Sweden
 Tel: +46 31 744 7700 Fax: +46 31 744 7701
 Email: sales@zyxel.se
 http://www.zyxel.se