

Dimension GS-1008/GS-1016

8/16 - port 100/1000M Workgroup Switch



ZyXEL's GS-1008/1016 is an 8/16 -port 100/1000 Mbps Ethernet switch. It provides high flexibility and high bandwidth connectivity to servers, workstations and other attached devices.

The GS-1008/1016 fits users who want higher bandwidth without complicated management features. For example, it can be installed in a medium-sized office building to establish connections between different floors or main servers. The GS-1008/1016 is a cost-effective solution where high-performance and reliable connections to a desktop are more important than management consideration.

The ease of plug-n-play, an outstanding price/performance ratio, and a flexible design make the GS-1008/1016 a simple, affordable choice for a wide range of applications.

Benefits

Gigabit Connections for Media-Rich Applications

The GS-1008/1016 supports gigabit connections which provide ultra high bandwidth for media-rich application today and years ahead.

Simple-to-Use

The GS-1008/1016 features auto-sensing 100/1000 Mbps ports that automatically detect the speed and duplex mode of attached servers, workstations, or hubs, making installation quick and easy.

Auto-MDI/MDI-X

With the auto-MDI/MDI-X feature, the GS-1008/1016 automatically adjusts the transmit/receive pins of a port based on the signal detected on the wire from the attached device, making crossover cables a thing of the past.

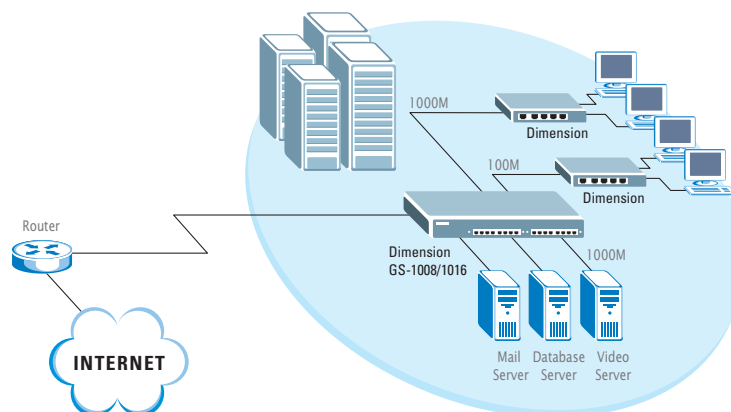
Flexible Design for Both Desktop and Cabinet Installation

No matter if it is the only device in the office, or a component of a complicated network, the 1U, 19" rack-mountable compact design makes the GS-1008/1016 ideal for both desktop and cabinet installation.

Workgroup Connectivity

The GS-1008/1016 has multiple gigabit Ethernet interfaces, which offer high bandwidth to different workgroups and main servers. It enables high-performance workgroup application without complicated configuration and management features.

Application Diagram



Features & Specifications

	GS-1008	GS-1016
General		
Standard	<ul style="list-style-type: none"> • IEEE 802.3 10BASE-T Ethernet • IEEE 802.3u 100BASE-TX Fast Ethernet • IEEE 802.3ab 1000 Base-T Gigabit Ethernet • ANSI/IEEE 802.3 Auto-negotiation 	
Interface	• 8 100/1000 BASE-T Ethernet port	• 16 100/1000 BASE-T Ethernet port
Media Interface Exchange	• All ports MDI-II/MDI-X auto-adjustment	
Data Transfer Rate	<ul style="list-style-type: none"> • Fast Ethernet: 100Mbps (half duplex), 200Mbps (full duplex) • Gigabit Ethernet: 2000Mbps (full duplex) 	
Network Cable	<ul style="list-style-type: none"> • 100BASE-TX: 2-pair UTP/STP Cat. 5 cable EIA/TIA-568 (100m) • 1000BASE-T: 4-pair UTP/STP Cat. 5 cable EIA/TIA-568 (100m) 	
Performance & Management		
Packet Forwarding Rate	<ul style="list-style-type: none"> • 148800pps for 100BASE-TX • 1488000pps for 1000BASE-T 	
Switching Method	• Store-and-forward	
MAC Address Table	• 8K entries	• 4K entries
Data Buffer	• 256KB	• 272KB
Physical & Environmental		
Weight	• 2.9Kg	• 3.0Kg
LED	<ul style="list-style-type: none"> • Per port: 100M, 1000M, LNK/ACT (Link/Active), FDX (Full-duplex) • System: power 	<ul style="list-style-type: none"> • Per port: 1000M, LNK/ACT (Link/Active), FDX (Full-duplex)
Dimensions	• 440(L) x 224(D) x 44(H) mm	
Power Supply	• 100 - 240VAC 50/60Hz internal universal power supply	
Power Consumption	• 30W max.	• 60W max.
Operating Temperature	• 0°C to 45°C (32°F to 113°F)	
Operational Humidity	• 10% to 90% (Non-condensing)	
EMI	<ul style="list-style-type: none"> • FCC Class A • CE 	
Safety	• UL, cUL	



Corporate Headquarters
 ZyXEL Communications Co.
 Tel: +886-3-578-3942
 Fax: +886-3-578-2439
 Email: sales@zyxel.com.tw
 http://www.zyxel.com

North America
 ZyXEL Communications Inc.
 Tel: +1-714-632-0882
 Fax: +1-714-632-0858
 Email: sales@zyxel.com
 http://www.zyxel.com

Germany
 ZyXEL Deutschland GmbH.
 Tel: +49 2405 6909 0
 Fax: +49 2405 6909 99
 Email: sales@zyxel.de
 http://www.zyxel.de

Denmark
 ZyXEL Communications A/S
 Tel: +45 39 55 07 00
 Fax: +45 39 55 07 07
 Email: sales@zyxel.dk
 http://www.zyxel.dk

Norway
 ZyXEL Communications A/S
 Tel: +47 22 80 61 80
 Fax: +47 22 80 61 81
 Email: sales@zyxel.no
 http://www.zyxel.no

Sweden
 ZyXEL Communications A/S
 Tel: +46 31 744 7700
 Fax: +46 31 744 7701
 Email: sales@zyxel.se
 http://www.zyxel.se

Finland
 ZyXEL Communications Oy
 Tel: +358-9-4780 8400
 Fax: +358-9-4780 8448
 Email: sales@zyxel.fi