

# *ZyXEL G-260*

*802.11g Wireless USB 2.0 Adapter*

## *User's Guide*

Version 1.00  
8/2005

The logo for ZyXEL, featuring the brand name in a bold, blue, italicized sans-serif font.

# Copyright

Copyright © 2005 by ZyXEL Communications Corporation.

The contents of this publication may not be reproduced in any part or as a whole, transcribed, stored in a retrieval system, translated into any language, or transmitted in any form or by any means, electronic, mechanical, magnetic, optical, chemical, photocopying, manual, or otherwise, without the prior written permission of ZyXEL Communications Corporation.

Published by ZyXEL Communications Corporation. All rights reserved.

## **Disclaimer**

ZyXEL does not assume any liability arising out of the application or use of any products, or software described herein. Neither does it convey any license under its patent rights nor the patent rights of others. ZyXEL further reserves the right to make changes in any products described herein without notice. This publication is subject to change without notice.

## **Trademarks**

ZyNOS (ZyXEL Network Operating System) is a registered trademark of ZyXEL Communications, Inc. Other trademarks mentioned in this publication are used for identification purposes only and may be properties of their respective owners.

# Federal Communications Commission (FCC) Interference Statement

The device complies with Part 15 of FCC rules. Operation is subject to the following two conditions:

- This device may not cause harmful interference.
- This device must accept any interference received, including interference that may cause undesired operations.

This equipment has been tested and found to comply with the limits for a Class B digital device pursuant to Part 15 of the FCC Rules. These limits are designed to provide reasonable protection against harmful interference in a commercial environment. This equipment generates, uses, and can radiate radio frequency energy, and if not installed and used in accordance with the instructions, may cause harmful interference to radio communications.

If this equipment does cause harmful interference to radio/television reception, which can be determined by turning the equipment off and on, the user is encouraged to try to correct the interference by one or more of the following measures:

- 1 Reorient or relocate the receiving antenna.
- 2 Increase the separation between the equipment and the receiver.
- 3 Connect the equipment into an outlet on a circuit different from that to which the receiver is connected.
- 4 Consult the dealer or an experienced radio/TV technician for help.

## Notice 1

Changes or modifications not expressly approved by the party responsible for compliance could void the user's authority to operate the equipment.

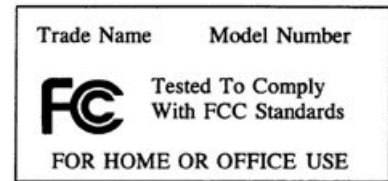
This product has been designed for the WLAN 2.4 GHz network throughout the EC region and Switzerland, with restrictions in France.

## Caution

- 1 The equipment complies with FCC RF radiation exposure limits set forth for an uncontrolled environment, under 47 CFR 2.1093 paragraph (d)(2).
- 2 This Transmitter must not be co-located or operating in conjunction with any other antenna or transmitter.

## Certifications

- 1 Go to [www.zyxel.com](http://www.zyxel.com)
- 2 Select your product from the drop-down list box on the ZyXEL home page to go to that product's page.
- 3 Select the certification you wish to view from this page



## 注意！

依據 低功率電波輻射性電機管理辦法

第十二條 經型式認證合格之低功率射頻電機，非經許可，公司、商號或使用者均不得擅自變更頻率、加大功率或變更原設計之特性及功能。

第十四條 低功率射頻電機之使用不得影響飛航安全及干擾合法通信；經發現有干擾現象時，應立即停用，並改善至無干擾時方得繼續使用。前項合法通信，指依電信規定作業之無線電信。低功率射頻電機須忍受合法通信或工業、科學及醫療用電波輻射性電機設備之干擾。

# ZyXEL Limited Warranty

ZyXEL warrants to the original end user (purchaser) that this product is free from any defects in materials or workmanship for a period of up to two (2) years from the date of purchase. During the warranty period, and upon proof of purchase, should the product have indications of failure due to faulty workmanship and/or materials, ZyXEL will, at its discretion, repair or replace the defective products or components without charge for either parts or labor, and to whatever extent it shall deem necessary to restore the product or components to proper operating condition. Any replacement will consist of a new or re-manufactured functionally equivalent product of equal value, and will be solely at the discretion of ZyXEL. This warranty shall not apply if the product is modified, misused, tampered with, damaged by an act of God, or subjected to abnormal working conditions.

## Note

Repair or replacement, as provided under this warranty, is the exclusive remedy of the purchaser. This warranty is in lieu of all other warranties, express or implied, including any implied warranty of merchantability or fitness for a particular use or purpose. ZyXEL shall in no event be held liable for indirect or consequential damages of any kind of character to the purchaser.

To obtain the services of this warranty, contact ZyXEL's Service Center for your Return Material Authorization number (RMA). Products must be returned Postage Prepaid. It is recommended that the unit be insured when shipped. Any returned products without proof of purchase or those with an out-dated warranty will be repaired or replaced (at the discretion of ZyXEL) and the customer will be billed for parts and labor. All repaired or replaced products will be shipped by ZyXEL to the corresponding return address, Postage Paid. This warranty gives you specific legal rights, and you may also have other rights that vary from country to country.

## Online Registration

Register online at [www.zyxel.com](http://www.zyxel.com) for free future product updates and information.

# Customer Support

Please have the following information ready when you contact customer support.

- Product model and serial number.
- Warranty Information.
- Date that you received your device.
- Brief description of the problem and the steps you took to solve it.

METHOD	SUPPORT E-MAIL	TELEPHONE <sup>A</sup>	WEB SITE	REGULAR MAIL
LOCATION	SALES E-MAIL	FAX	FTP SITE	
CORPORATE HEADQUARTERS (WORLDWIDE)	support@zyxel.com.tw	+886-3-578-3942	www.zyxel.com www.europe.zyxel.com	ZyXEL Communications Corp. 6 Innovation Road II Science Park Hsinchu 300 Taiwan
	sales@zyxel.com.tw	+886-3-578-2439	ftp.zyxel.com ftp.europe.zyxel.com	
CZECH REPUBLIC	info@cz.zyxel.com	+420 241 091 350	www.zyxel.cz	ZyXEL Communications Czech s.r.o. Modranská 621 143 01 Praha 4 - Modrany Ceská Republika
	info@cz.zyxel.com	+420 241 091 359		
DENMARK	support@zyxel.dk	+45 39 55 07 00	www.zyxel.dk	ZyXEL Communications A/S Columbusvej 5 2860 Soeborg Denmark
	sales@zyxel.dk	+45 39 55 07 07		
FINLAND	support@zyxel.fi	+358-9-4780-8411	www.zyxel.fi	ZyXEL Communications Oy Malminkaari 10 00700 Helsinki Finland
	sales@zyxel.fi	+358-9-4780 8448		
FRANCE	info@zyxel.fr	+33 (0)4 72 52 97 97	www.zyxel.fr	ZyXEL France 1 rue des Vergers Bat. 1 / C 69760 Limonest France
		+33 (0)4 72 52 19 20		
GERMANY	support@zyxel.de	+49-2405-6909-0	www.zyxel.de	ZyXEL Deutschland GmbH. Adenauerstr. 20/A2 D-52146 Wuerselen Germany
	sales@zyxel.de	+49-2405-6909-99		
NORTH AMERICA	support@zyxel.com	+1-800-255-4101 +1-714-632-0882	www.us.zyxel.com	ZyXEL Communications Inc. 1130 N. Miller St. Anaheim CA 92806-2001 U.S.A.
	sales@zyxel.com	+1-714-632-0858	ftp.us.zyxel.com	
NORWAY	support@zyxel.no	+47 22 80 61 80	www.zyxel.no	ZyXEL Communications A/S Niils Hansens vei 13 0667 Oslo Norway
	sales@zyxel.no	+47 22 80 61 81		
SPAIN	support@zyxel.es	+34 902 195 420	www.zyxel.es	ZyXEL Communications Alejandro Villegas 33 1º, 28043 Madrid Spain
	sales@zyxel.es	+34 913 005 345		
SWEDEN	support@zyxel.se	+46 31 744 7700	www.zyxel.se	ZyXEL Communications A/S Sjöporten 4, 41764 Göteborg Sweden
	sales@zyxel.se	+46 31 744 7701		

<b>METHOD</b>	<b>SUPPORT E-MAIL</b>	<b>TELEPHONE<sup>A</sup></b>	<b>WEB SITE</b>	<b>REGULAR MAIL</b>
<b>LOCATION</b>	<b>SALES E-MAIL</b>	<b>FAX</b>	<b>FTP SITE</b>	
<b>UNITED KINGDOM</b>	support@zyxel.co.uk	+44 (0) 1344 303044 08707 555779 (UK only)	www.zyxel.co.uk	ZyXEL Communications UK Ltd., 11 The Courtyard, Eastern Road, Bracknell, Berkshire, RG12 2XB, United Kingdom (UK)
	sales@zyxel.co.uk	+44 (0) 1344 303034	ftp.zyxel.co.uk	

a. "+" is the (prefix) number you enter to make an international telephone call.

# Table of Contents

<b>Copyright</b> .....	<b>2</b>
<b>Federal Communications Commission (FCC) Interference Statement</b> .....	<b>3</b>
<b>ZyXEL Limited Warranty</b> .....	<b>5</b>
<b>Customer Support</b> .....	<b>6</b>
<b>Table of Contents</b> .....	<b>8</b>
<b>List of Figures</b> .....	<b>12</b>
<b>List of Tables</b> .....	<b>14</b>
<b>Preface</b> .....	<b>16</b>
<b>Chapter 1</b>	
<b>Getting Started</b> .....	<b>18</b>
1.1 About Your ZyXEL G-260 .....	18
1.1.1 Application Overview .....	18
1.1.1.1 Infrastructure .....	18
1.1.1.2 Ad-Hoc .....	19
1.2 ZyXEL G-260 Hardware and Utility Installation .....	19
1.3 Configuration Methods .....	19
1.4 Windows XP Users Only .....	19
1.5 Accessing the ZyXEL Utility .....	20
1.6 Connecting to a Wireless LAN .....	20
1.6.1 Site Survey .....	20
1.7 ZyXEL Utility Screen Summary .....	22
<b>Chapter 2</b>	
<b>Wireless LAN Network</b> .....	<b>24</b>
2.1 Wireless LAN Overview .....	24
2.1.1 SSID .....	24
2.1.2 Channel .....	24
2.1.3 Transmission Rate (Tx Rate) .....	24
2.2 Wireless LAN Security Overview .....	24
2.2.1 Data Encryption with WEP .....	25
2.2.2 IEEE 802.1x .....	25
2.2.2.1 EAP Authentication .....	25
2.2.3 WPA(2) .....	26



2.2.3.1 User Authentication .....	26
2.2.3.2 Encryption .....	26
2.2.4 WPA(2)-PSK Application Example .....	27
2.2.5 WPA with RADIUS Application Example .....	27
2.3 Encryption Type .....	28
2.4 Preamble Type .....	28
2.5 Introduction to OTIST .....	29
2.5.1 Enabling OTIST .....	29
2.5.1.1 AP .....	29
2.5.1.2 Wireless Client .....	30
2.5.2 Starting OTIST .....	31
2.5.3 Notes on OTIST .....	31
<b>Chapter 3</b>	
<b>ZyXEL Utility Configuration .....</b>	<b>34</b>
3.1 The Link Info Screen .....	34
3.1.1 Trend Chart .....	35
3.2 The Site Survey Screen .....	36
3.2.1 Connecting to a WLAN Network .....	37
3.2.2 Security Settings .....	37
3.2.2.1 WEP Encryption .....	37
3.2.2.2 WPA/WPA2 .....	39
3.2.2.3 WPA-PSK/WPA2-PSK .....	40
3.2.2.4 802.1x .....	40
3.2.3 Confirm Save Screen .....	41
3.3 The Profile Screen .....	42
3.3.1 Adding a New Profile .....	43
3.4 The Adapter Screen .....	47
<b>Chapter 4</b>	
<b>Maintenance .....</b>	<b>50</b>
4.1 The About Screen .....	50
4.2 Uninstalling the ZyXEL Utility .....	50
4.3 Upgrading the ZyXEL Utility .....	51
<b>Chapter 5</b>	
<b>Troubleshooting .....</b>	<b>54</b>
5.1 Problems Starting the ZyXEL Utility Program .....	54
5.2 Problem with the Link Status .....	54
5.3 Problems Communicating With Other Computers .....	55
<b>Appendix A</b>	
<b>Product Specifications .....</b>	<b>56</b>

<b>Appendix B</b>	
<b>Disable Windows XP Wireless LAN Configuration Tool.....</b>	<b>58</b>
<b>Appendix C</b>	
<b>Management with Wireless Zero Configuration .....</b>	<b>64</b>
<b>Appendix D</b>	
<b>Types of EAP Authentication .....</b>	<b>76</b>
<b>Index.....</b>	<b>80</b>



# List of Figures

Figure 1 Application: Infrastructure .....	18
Figure 2 Application: Ad-Hoc .....	19
Figure 3 ZyXEL Utility: System Tray Icon .....	20
Figure 4 ZyXEL Utility: Site Survey .....	21
Figure 5 ZyXEL Utility: Security Settings .....	21
Figure 6 ZyXEL Utility: Link Info .....	22
Figure 7 Menu Summary .....	22
Figure 8 WPA-PSK Authentication .....	27
Figure 9 WPA with RADIUS Application Example .....	28
Figure 10 Link Info .....	34
Figure 11 Link Info: Trend Chart .....	35
Figure 12 Site Survey .....	36
Figure 13 Security Settings: WEP .....	37
Figure 14 Security Settings: WPA/WPA2 .....	39
Figure 15 Security Settings: WPA-PSK/WPA2-PSK .....	40
Figure 16 Security Settings: 802.1x .....	40
Figure 17 Confirm Save Screen .....	41
Figure 18 Profile Screen .....	42
Figure 19 Profile: Add New Profile .....	44
Figure 20 Profile: Wireless Setting: Select a Channel .....	45
Figure 21 Profile: Security Setting: Encryption Type .....	46
Figure 22 Profile: Security Setting .....	46
Figure 23 Profile: Confirm New Settings .....	47
Figure 24 Profile: Activate the Profile .....	47
Figure 25 Adapter Screen .....	47
Figure 26 About .....	50
Figure 27 Uninstall: Confirm .....	51
Figure 28 Uninstall: Finish .....	51
Figure 29 Windows XP: System Tray Icon .....	58
Figure 30 Windows XP SP1: Wireless Network Connection .....	59
Figure 31 Windows XP SP2: Wireless Network Connection .....	59
Figure 32 Windows XP SP1: Wireless Network Connection Properties .....	60
Figure 33 Windows XP SP2: Wireless Network Connection Properties .....	60
Figure 34 Windows XP SP1: Wireless Network Connection Status .....	61
Figure 35 Windows XP SP2: Wireless Network Connection Status .....	61
Figure 36 Windows XP SP1: Wireless Network Connection Properties .....	62
Figure 37 Windows XP SP2: Wireless Network Connection Properties .....	62
Figure 38 Windows XP SP2: WZC Not Available .....	64

Figure 39 Windows XP SP2: System Tray Icon .....	65
Figure 40 Windows XP SP2: Wireless Network Connection Status .....	65
Figure 41 Windows XP SP1: Wireless Network Connection Status .....	66
Figure 42 Windows XP SP2: Wireless Network Connection .....	66
Figure 43 Windows XP SP1: Wireless Network Connection Properties .....	67
Figure 44 Windows XP SP2: Wireless Network Connection: WEP or WPA-PSK ..	68
Figure 45 Windows XP SP2: Wireless Network Connection: No Security .....	68
Figure 46 Windows XP: Wireless (network) properties: Association .....	69
Figure 47 Windows XP: Wireless (network) properties: Authentication .....	70
Figure 48 Windows XP: Protected EAP Properties .....	71
Figure 49 Windows XP: Smart Card or other Certificate Properties .....	72
Figure 50 Windows XP SP2: Wireless Networks: Preferred Networks .....	74
Figure 51 Windows XP SP1: Wireless Networks: Preferred Networks .....	74

# List of Tables

Table 1 ZyXEL Utility: System Tray Icon .....	20
Table 2 ZyXEL Utility: Menu Screen Summary .....	22
Table 3 Link Info .....	34
Table 4 Link Info: Trend Chart .....	35
Table 5 Site Survey .....	36
Table 6 Security Settings: WEP .....	38
Table 7 Security Settings: WPA/WPA2 .....	39
Table 8 Security Settings: WPA-PSK/WPA2-PSK .....	40
Table 9 Security Settings: 802.1x .....	41
Table 10 Confirm Save Screen .....	42
Table 11 Profile Screen .....	43
Table 12 Profile: Add New Profile .....	44
Table 13 Profile: Wireless Setting: Select a Channel .....	45
Table 14 Adapter .....	48
Table 15 About .....	50
Table 16 Troubleshooting Starting ZyXEL Utility Program .....	54
Table 17 Troubleshooting Link Quality .....	54
Table 18 Troubleshooting Communication Problem .....	55
Table 19 Product Specifications .....	56
Table 20 Windows XP SP2: System Tray Icon .....	65
Table 21 Windows XP SP2: Wireless Network Connection .....	67
Table 22 Windows XP: Wireless Networks .....	68
Table 23 Windows XP: Wireless (network) properties: Association .....	69
Table 24 Windows XP: Wireless (network) properties: Authentication .....	70
Table 25 Windows XP: Protected EAP Properties .....	72
Table 26 Windows XP: Smart Card or other Certificate Properties .....	73
Table 27 Comparison of EAP Authentication Types .....	77
Table 28 Wireless Security Relational Matrix .....	79



# Preface

Congratulations on your purchase of the ZyXEL G-220F 802.11g Wireless USB Adapter.



**Note:** Register your product online to receive e-mail notices of firmware upgrades and information at [www.zyxel.com](http://www.zyxel.com) for global products, or at [www.us.zyxel.com](http://www.us.zyxel.com) for North American products.

Your ZyXEL G-260 is easy to install and configure.

## About This User's Guide

This manual is designed to guide you through the configuration of your ZyXEL G-260 for its various applications.

## Related Documentation

- Supporting Disk

Refer to the included CD for support documents.

- Quick Start Guide

The Quick Start Guide is designed to help you get up and running right away. They contain hardware installation/connection information.

- ZyXEL Glossary and Web Site

Please refer to [www.zyxel.com](http://www.zyxel.com) for an online glossary of networking terms and additional support documentation.

## User Guide Feedback

Help us help you. E-mail all User Guide-related comments, questions or suggestions for improvement to [techwriters@zyxel.com.tw](mailto:techwriters@zyxel.com.tw) or send regular mail to The Technical Writing Team, ZyXEL Communications Corp., 6 Innovation Road II, Science-Based Industrial Park, Hsinchu, 300, Taiwan. Thank you.





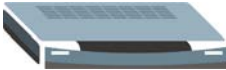





## Syntax Conventions

- “Enter” means for you to type one or more characters. “Select” or “Choose” means for you to use one predefined choices.
- The SMT menu titles and labels are in **Bold Times New Roman** font. Predefined field choices are in **Bold Arial** font. Command and arrow keys are enclosed in square brackets. [ENTER] means the Enter, or carriage return key; [ESC] means the Escape key and [SPACE BAR] means the Space Bar.
- Mouse action sequences are denoted using a comma. For example, “click the Apple icon, **Control Panels** and then **Modem**” means first click the Apple icon, then point your mouse pointer to **Control Panels** and then click **Modem**.



- For brevity's sake, we will use "e.g.," as a shorthand for "for instance", and "i.e.," for "that is" or "in other words" throughout this manual.
- The ZyXEL G-220F 802.11g Wireless USB Adapter may be referred to as the ZyXEL G-260 in this user's guide.

### Graphics Icons Key

<p>Wireless Access Point</p> 	<p>Computer</p> 	<p>Notebook Computer</p> 
<p>Server</p> 	<p>Modem</p> 	<p>Wireless Signal</p> 
<p>Telephone</p> 	<p>Switch</p> 	<p>Router</p> 
<p>Internet Cloud</p> 		

# CHAPTER 1

## Getting Started

This chapter introduces the ZyXEL G-260 and prepares you to use the ZyXEL Utility.

### 1.1 About Your ZyXEL G-260

The ZyXEL G-260 is an IEEE 802.11g compliant wireless LAN USB adapter.

The following lists the main features of your ZyXEL G-260. See the product specifications in the appendix for detailed features.

- Automatic rate selection.
- Security: WEP (Wired Equivalent Privacy), IEEE 802.1x, WPA-PSK, WPA (Wi-Fi Protected Access), WPA2-PSK and WPA2
- A built-in antenna
- Driver and utility support for Windows 98 Second Edition, Windows ME, Windows 2000 and Windows XP.

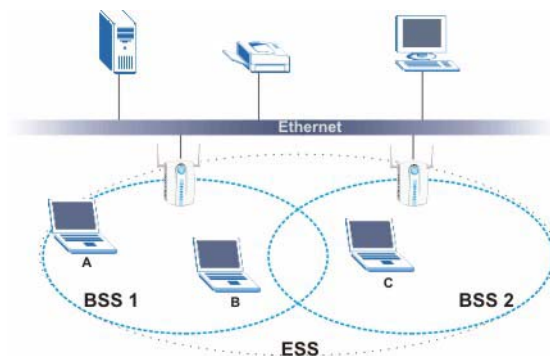
#### 1.1.1 Application Overview

This section describes some network applications for the ZyXEL G-260.

##### 1.1.1.1 Infrastructure

To connect to a network via an Access Point (AP), set the ZyXEL G-260 network type to Infrastructure. Through the AP, you can access the Internet or the wired network behind the AP.

**Figure 1** Application: Infrastructure

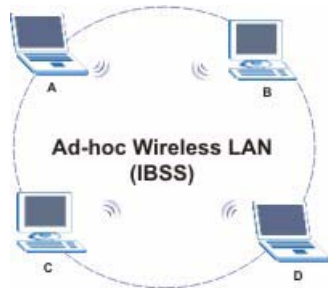


### 1.1.1.2 Ad-Hoc

In case you prefer to set up a small independent wireless workgroup without an AP, use the Ad-Hoc mode.

Ad-hoc mode does not require an AP or a wired network. Two or more wireless clients communicate directly to each other.

**Figure 2** Application: Ad-Hoc



## 1.2 ZyXEL G-260 Hardware and Utility Installation

Follow the instructions in the Quick Start Guide to install the ZyXEL Utility and make hardware connections.

## 1.3 Configuration Methods

To configure your ZyXEL G-260, use one of the following applications:

- Wireless Zero Configuration (WZC) (recommended for Windows XP)
- ZyXEL Utility
- Odyssey Client Manager (not supplied)

**Note:** Do NOT use the Windows XP configuration tool or the Odyssey Client Manager and the ZyXEL Utility at the same time.

Refer to the Odyssey Client Manager documentation for more information.

## 1.4 Windows XP Users Only

You must disable WZC if you want to use the ZyXEL utility. Refer to the appendices on how to deactivate WZC or how to use WZC to manage the ZyXEL G-260.

**Note:** When you use the ZyXEL Utility, it automatically disables the Windows XP wireless configuration tool.

## 1.5 Accessing the ZyXEL Utility

After you install and start the ZyXEL Utility, an icon for the ZyXEL Utility appears in the system tray.

**Note:** When the ZyXEL Utility system tray icon displays, the ZyXEL G-260 is installed properly.

When you use the ZyXEL Utility, it automatically disables the Windows XP wireless configuration tool.

**Figure 3** ZyXEL Utility: System Tray Icon




The color of the ZyXEL Utility system tray icon indicates the status of the ZyXEL G-260. Refer to the following table for details.

**Table 1** ZyXEL Utility: System Tray Icon

COLOR	DESCRIPTION
Red	The ZyXEL G-260 is operating in wireless station mode but is not connected to a wireless network.
Green	The ZyXEL G-260 is operating in wireless station mode and connected to a wireless network.

Double-click on the ZyXEL Wireless LAN Utility icon in the system tray to open the ZyXEL Utility. The ZyXEL Utility screens are similar in all Microsoft Windows versions. Screens for Windows 2000 are shown.

**Note:** Click the  icon (located in the top right corner) to display the on-line help window.

## 1.6 Connecting to a Wireless LAN

The following sections show you how to associate with a network using the ZyXEL Utility. You can either manually connect to a network or configure a profile to have the ZyXEL G-260 automatically connect to a specific network. Otherwise, configure nothing and leave the ZyXEL G-260 to automatically scan for and connect to any other available network without security.

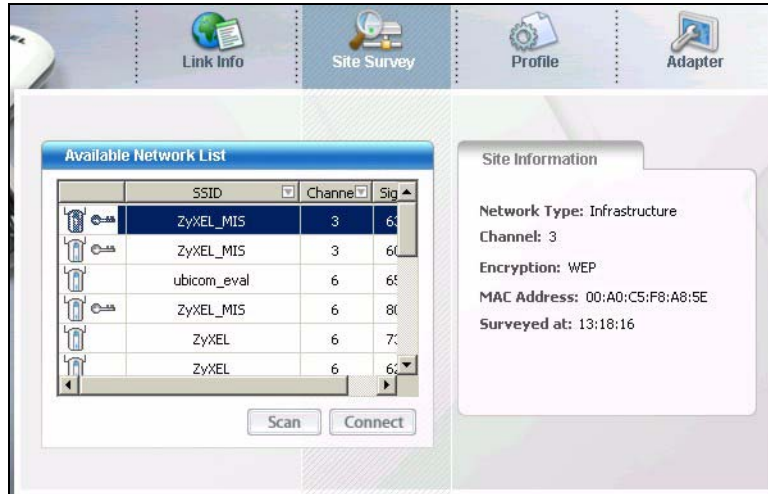
See the next chapters for detailed field descriptions.

### 1.6.1 Site Survey

After you install the ZyXEL Utility and then insert the ZyXEL G-260, follow the steps below to connect to a network using the Site Survey screen.

- 1 Make sure a wireless network is available and within range.
- 2 Open the ZyXEL Utility and click the **Site Survey** tab to open the screen as shown next.
- 3 Click **Scan** to search for available wireless networks.

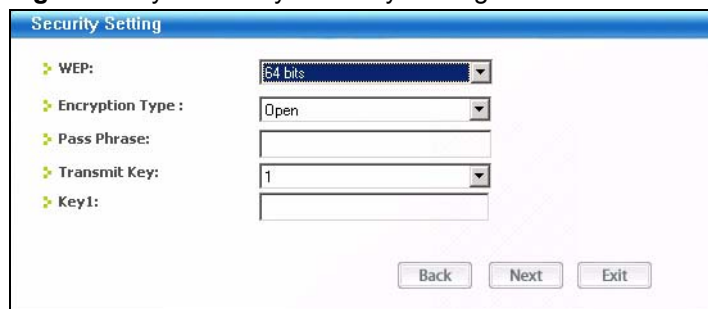
**Figure 4** ZyXEL Utility: Site Survey



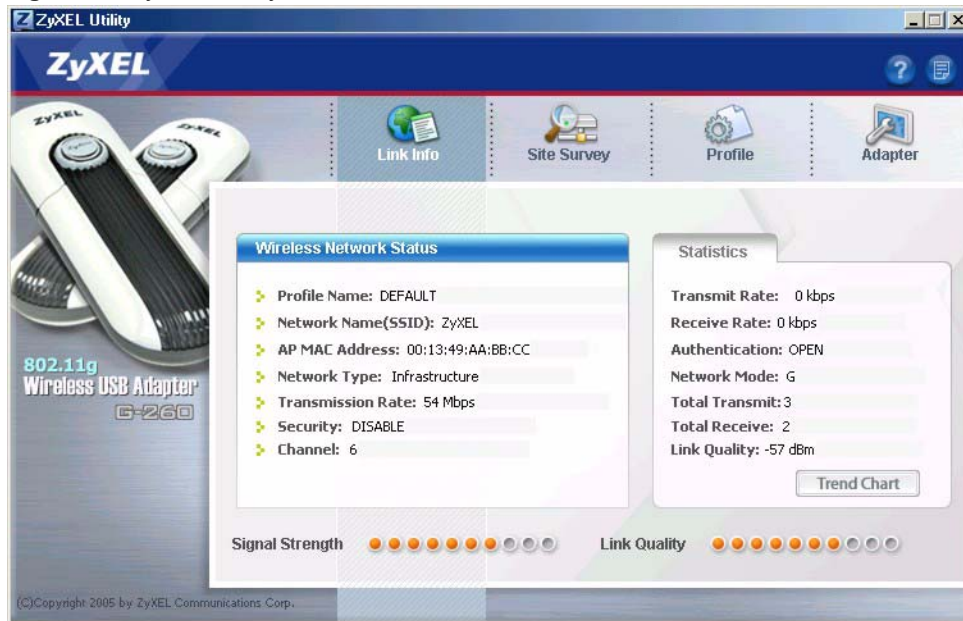
- 4 To join a network, either click an SSID in the table and then click **Connect** or double-click an SSID.
- 5 If the wireless security is activated for the selected wireless network, the **Security Settings** screen displays. This screen varies according to the network's encryption method. Configure the same security settings as the associated network.

**Note:** If the selected network is unavailable or security settings are not correct, the ZyXEL G-260 will be disconnected.

**Figure 5** ZyXEL Utility: Security Settings



- 6 Verify that you have successfully connected to the selected network and check the network information in the **Link Info** screen. If the ZyXEL G-260 is not connected to a network, the fields in this screen are blank.

**Figure 6** ZyXEL Utility: Link Info

## 1.7 ZyXEL Utility Screen Summary

This sections describes the ZyXEL Utility screens.

**Figure 7** Menu Summary

The following table describes the menus.

**Table 2** ZyXEL Utility: Menu Screen Summary

TAB	DESCRIPTION
Link Info	Use this screen to see your current connection status, configuration and data rate statistics.
Site Survey	Use this screen to <ul style="list-style-type: none"> <li>scan for a wireless network</li> <li>configure wireless security (if activated on the selected network).</li> <li>connect to a wireless network.</li> </ul>
Profile	Use this screen to add, delete, edit or activate a profile with a set of wireless and security settings.
Adapter	Use this screen to configure a transfer rate, enable power saving and use OTIST (One-Touch Intelligent Security Technology).



# CHAPTER 2

## Wireless LAN Network

This chapter provides background information on wireless LAN network.

### 2.1 Wireless LAN Overview

This section describes the wireless LAN network terms and applications.

#### 2.1.1 SSID

The SSID (Service Set Identity) is a unique name shared among all wireless devices in a wireless network. Wireless devices must have the same SSID to communicate with each other.

#### 2.1.2 Channel

A radio frequency used by a wireless device is called a channel.

#### 2.1.3 Transmission Rate (Tx Rate)

The ZyXEL G-260 provides various transmission (data) rate options for you to select. Options include **Fully Auto**, **1 Mbps**, **2 Mbps**, **5.5 Mbps**, **6 Mbps**, **9 Mbps**, **11 Mbps**, **12 Mbps**, **18 Mbps**, **24 Mbps**, **36 Mbps**, **48 Mbps** and **54 Mbps**. In most networking scenarios, the factory default **Fully Auto** setting proves the most efficient. This setting allows your ZyXEL G-260 to operate at the maximum transmission (data) rate. When the communication quality drops below a certain level, the ZyXEL G-260 automatically switches to a lower transmission (data) rate. Transmission at lower data speeds is usually more reliable. However, when the communication quality improves again, the ZyXEL G-260 gradually increases the transmission (data) rate again until it reaches the highest available transmission rate. You can select any of the above options. If you wish to balance speed versus reliability, select **54 Mbps** in a networking environment where you are certain that all wireless devices can communicate at the highest transmission (data) rate. **1 Mbps** or **2 Mbps** are used often in networking environments where the range of the wireless connection is more important than speed.

**Note:** With USB1.0/1.1, the ZyXEL G-260 can only transmit at up to 11Mbps.

### 2.2 Wireless LAN Security Overview

Wireless LAN security is vital to your network to protect wireless communications.



Configure the wireless LAN security using the **Configuration** or the **Profile Security Settings** screen. If you do not enable any wireless security on your ZyXEL G-260, the ZyXEL G-260's wireless communications are accessible to any wireless networking device that is in the coverage area.

## 2.2.1 Data Encryption with WEP

WEP (Wired Equivalent Privacy) encryption scrambles all data packets transmitted between the ZyXEL G-260 and the AP or other wireless stations to keep network communications private. Both the wireless stations and the access points must use the same WEP key for data encryption and decryption.

There are two ways to create WEP keys in your ZyXEL G-260.

- Automatic WEP key generation based on a “password phrase” called a passphrase. The passphrase is case sensitive. You must use the same passphrase for all WLAN adapters with this feature in the same WLAN.

For WLAN adapters without the passphrase feature, you can still take advantage of this feature by writing down the four automatically generated WEP keys from the **Security Settings** screen of the ZyXEL Utility and entering them manually as the WEP keys in the other WLAN adapter(s).

- Enter the WEP keys manually.

Your ZyXEL G-260 allows you to configure up to four 64-bit, 128-bit or 256-bit WEP keys and only one key is used as the default key at any one time.

## 2.2.2 IEEE 802.1x

The IEEE 802.1x standard outlines enhanced security methods for both the authentication of wireless stations and encryption key management. Authentication can be done using an external RADIUS server.

### 2.2.2.1 EAP Authentication

EAP (Extensible Authentication Protocol) is an authentication protocol that runs on top of the IEEE 802.1x transport mechanism in order to support multiple types of user authentication. By using EAP to interact with an EAP-compatible RADIUS server, an access point helps a wireless station and a RADIUS server perform authentication.

The type of authentication you use depends on the RADIUS server and an intermediary AP(s) that supports IEEE 802.1x. The ZyXEL G-260 supports EAP-TLS and EAP-PEAP. Refer to [Appendix D on page 76](#) for descriptions.

For EAP-TLS authentication type, you must first have a wired connection to the network and obtain the certificate(s) from a certificate authority (CA). A certificate (also called digital IDs) can be used to authenticate users and a CA issues certificates and guarantees the identity of each certificate owner.

## 2.2.3 WPA(2)

Wi-Fi Protected Access (WPA) is a subset of the IEEE 802.11i standard. Key differences between WPA(2) and WEP are user authentication and improved data encryption.

### 2.2.3.1 User Authentication

WPA(2) applies IEEE 802.1x and Extensible Authentication Protocol (EAP) to authenticate wireless clients using an external RADIUS database.

Therefore, if you don't have an external RADIUS server, you should use WPA(2)-PSK (WPA -Pre-Shared Key) that only requires a single (identical) password entered into each access point, wireless gateway and wireless client. As long as the passwords match, a client will be granted access to a WLAN.

### 2.2.3.2 Encryption

WPA improves data encryption by using Temporal Key Integrity Protocol (TKIP), Message Integrity Check (MIC) and IEEE 802.1x. In addition, WPA2 uses Advanced Encryption Standard (AES) to offer stronger encryption.

Temporal Key Integrity Protocol (TKIP) uses 128-bit keys that are dynamically generated and distributed by the authentication server. It includes a per-packet key mixing function, a Message Integrity Check (MIC) named Michael, an extended initialization vector (IV) with sequencing rules, and a re-keying mechanism.

TKIP regularly changes and rotates the encryption keys so that the same encryption key is never used twice. The RADIUS server distributes a Pairwise Master Key (PMK) key to the AP that then sets up a key hierarchy and management system, using the pair-wise key to dynamically generate unique data encryption keys to encrypt every data packet that is wirelessly communicated between the AP and the wireless clients. This all happens in the background automatically.

AES (Advanced Encryption Standard) is a newer method of data encryption that also uses a secret key. This implementation of AES applies a 128-bit key to 128-bit blocks of data.

The Message Integrity Check (MIC) is designed to prevent an attacker from capturing data packets, altering them and resending them. The MIC provides a strong mathematical function in which the receiver and the transmitter each compute and then compare the MIC. If they do not match, it is assumed that the data has been tampered with and the packet is dropped.

By generating unique data encryption keys for every data packet and by creating an integrity checking mechanism (MIC), TKIP makes it much more difficult to decode data on a Wi-Fi network than WEP, making it difficult for an intruder to break into the network.

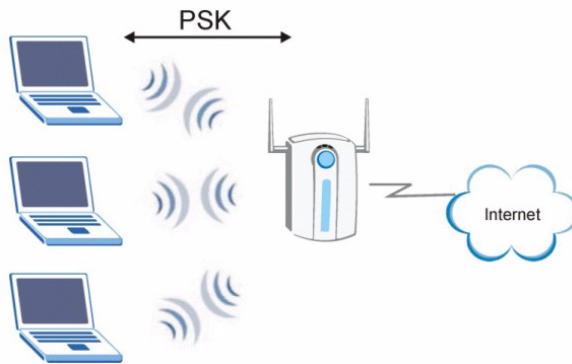
The encryption mechanisms used for WPA(2) and WPA(2)-PSK are the same. The only difference between the two is that WPA(2)-PSK uses a simple common password, instead of user-specific credentials. The common-password approach makes WPA(2)-PSK susceptible to brute-force password-guessing attacks but it's still an improvement over WEP as it employs an easier-to-use, consistent, single, alphanumeric password.

## 2.2.4 WPA(2)-PSK Application Example

A WPA(2)-PSK application looks as follows.

- 1 First enter identical passwords into the AP and all wireless clients. The Pre-Shared Key (PSK) must consist of between 8 and 63 ASCII characters (including spaces and symbols).
- 2 The AP checks each client's password and (only) allows it to join the network if it matches its password.
- 3 The AP derives and distributes keys to the wireless clients.
- 4 The AP and wireless clients use the TKIP encryption process to encrypt data exchanged between them.

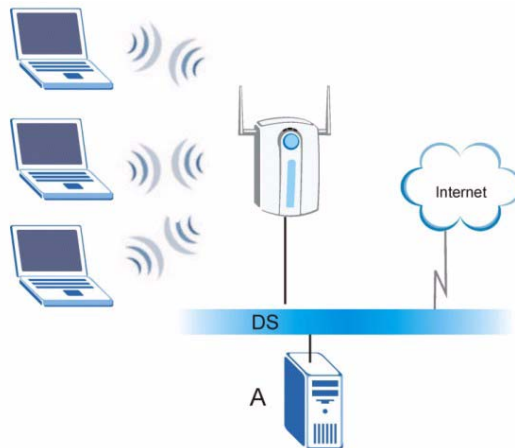
**Figure 8** WPA-PSK Authentication



## 2.2.5 WPA with RADIUS Application Example

You need the IP address of the RADIUS server, its port number (default is 1812), and the RADIUS shared secret. A WPA-RADIUS application example with an external RADIUS server looks as follows. "A" is the RADIUS server. "DS" is the distribution system.

- 1 The AP passes the wireless client's authentication request to the RADIUS server.
- 2 The RADIUS server then checks the user's identification against its database and grants or denies network access accordingly.
- 3 The RADIUS server distributes a Pairwise Master Key (PMK) key to the AP that then sets up a key hierarchy and management system, using the pair-wise key to dynamically generate unique data encryption keys to encrypt every data packet that is wirelessly communicated between the AP and the wireless clients.

**Figure 9** WPA with RADIUS Application Example

## 2.3 Encryption Type

The IEEE 802.11b/g standard describes a simple encryption method between the wireless stations and AP. Two encryption types are defined: an **Open** system mode and a **Shared** key mode.

- **Open System** mode is implemented for ease-of-use and when security is not an issue. The wireless station and the AP do *not* share a secret key. Thus the wireless stations can associate with any AP and listen to any data transmitted plaintext.
- **Shared Key** mode involves a shared secret key to authenticate the wireless station to the AP. This requires you to enable the WEP encryption and specify a WEP key on both the wireless station and the AP.

## 2.4 Preamble Type

Preamble is used to signal that data is coming to the receiver.

Short preamble increases performance as less time sending preamble means more time for sending data. All IEEE 802.11b/g compliant wireless adapters support long preamble, but not all support short preamble.

Select **Long Preamble** if you are unsure what preamble mode the wireless adapters support, and to provide more reliable communications in busy wireless networks.

Select **Short Preamble** if you are sure the wireless adapters support it, and to provide more efficient communications.

Select **Auto** to have the ZyXEL G-260 automatically use short preamble when all access point/wireless stations support it, otherwise the ZyXEL G-260 uses long preamble.

**Note:** The ZyXEL G-260 and the access point/wireless stations **MUST** use the same preamble mode in order to communicate.

## 2.5 Introduction to OTIST

In a wireless network, the wireless clients must have the same SSID and security settings as the access point (AP) or wireless router (we will refer to both as “AP” here) in order to associate with it. Traditionally this meant that you had to configure the settings on the AP and then manually configure the exact same settings on each wireless client.

OTIST (One-Touch Intelligent Security Technology) allows you to transfer your AP's SSID and WEP or WPA-PSK security settings to wireless clients that support OTIST and are within transmission range. You can also choose to have OTIST generate a WPA-PSK key for you if you didn't configure one manually.

### 2.5.1 Enabling OTIST

You must enable OTIST on both the AP and wireless client before you start transferring settings.

We use the Prestige 334WT in this guide as an example. Screens may vary slightly for your ZyXEL devices.

**Note:** The AP and wireless client(s) **MUST** use the same **Setup key**.

#### 2.5.1.1 AP

On the Prestige 334WT, you can enable OTIST using the **Reset** button or the web configurator. If you use the **Reset** button, the default (01234567) or previous saved (through the web configurator) **Setup key** is used to encrypt the settings that you want to transfer.

Hold in the **Reset** button for one or two seconds.

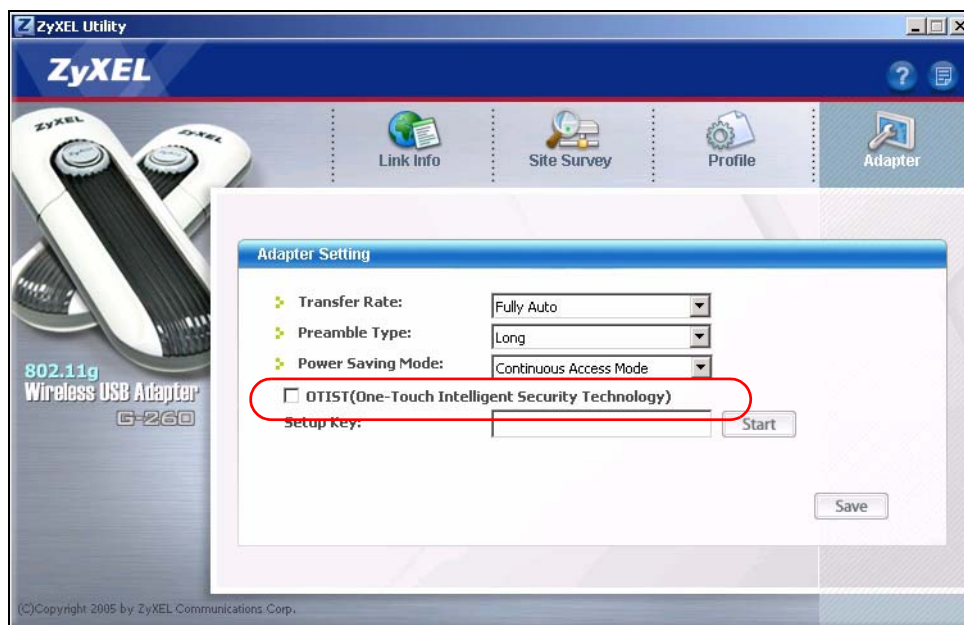
**Note:** If you hold in the **Reset** button too long, the device will reset to the factory defaults!

In the web configurator, go to the **Wireless LAN** main screen and then select **OTIST**. To change the **Setup key**, enter zero to eight printable characters. To have OTIST automatically generate a WPA-PSK key, select the **Yes** check box. If you manually configured a WEP key or a WPA-PSK key and you also selected this check box, then the key you manually configured is used.



### 2.5.1.2 Wireless Client

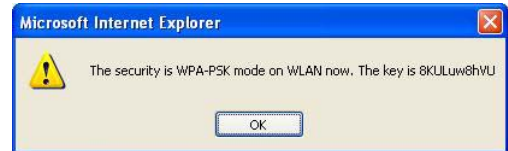
Start the ZyXEL Utility and click the **Adapter** tab. Select the **Auto Security** check box, enter the same **Setup Key** as your AP's and click **Save**.



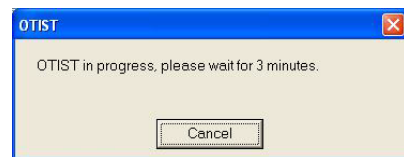
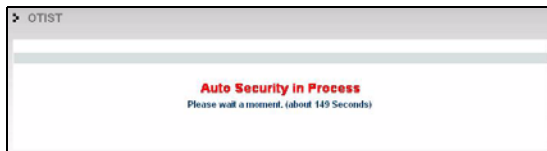
## 2.5.2 Starting OTIST

**Note:** You must click **Start** in the AP **OTIST** web configurator screen and **Save** in the wireless client(s) **Adapter** screen all within three minutes (at the time or writing). You can start OTIST in the wireless clients and AP in any order but they must all be within range and have OTIST enabled.

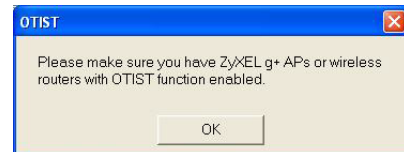
- 1 In the AP, a web configurator screen pops up showing you the security settings to transfer. After reviewing the settings, click **OK**.



- 2 This screen appears while OTIST settings are being transferred. It closes when the transfer is complete.



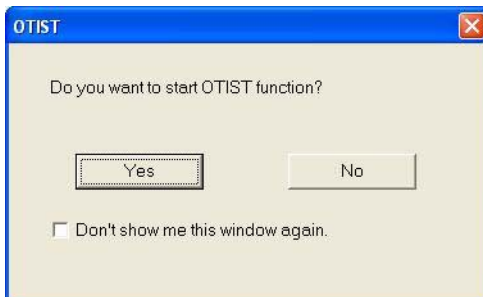
- In the wireless client, you see this screen if it can't find an OTIST-enabled AP (with the same **Setup key**). Click **OK** to go back to the ZyXEL utility main screen.



- If there is more than one OTIST-enabled AP within range, you see a screen asking you to select one AP to get settings from.

## 2.5.3 Notes on OTIST

- 1 If you enabled OTIST in the wireless client, you see this screen each time you start the ZyXEL utility. Click **Yes** for it to search for an OTIST-enabled AP.



- 2 If an OTIST-enabled wireless client loses its wireless connection for more than ten seconds, it will search for an OTIST-enabled AP for up to one minute. (If you manually have the wireless client search for an OTIST-enabled AP, there is no timeout; click **Cancel** in the OTIST progress screen to stop the search.)

- 3** When the wireless client finds an OTIST-enabled AP, you must still click **Start** in the AP **OTIST** web configurator screen or hold in the **Reset** button (for one or two seconds) for the AP to transfer settings.
- 4** If you change the SSID or the keys on the AP after using OTIST, you need to run OTIST again or enter them manually in the wireless client(s).
- 5** If you configure OTIST to generate a WPA-PSK key, this key changes each time you run OTIST. Therefore, if a new wireless client joins your wireless network, you need to run OTIST on the AP and ALL the wireless clients again.





# CHAPTER 3

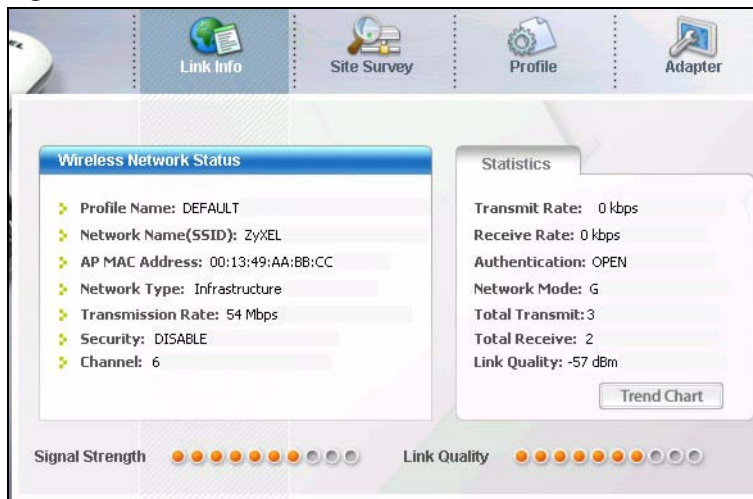
## ZyXEL Utility Configuration

This chapter shows you how to configure your ZyXEL G-260 in wireless station mode.

### 3.1 The Link Info Screen

When the ZyXEL Utility starts, the **Link Info** screen displays, showing the current configuration and connection status of your ZyXEL G-260.

**Figure 10** Link Info



The following table describes the labels in this screen.

**Table 3** Link Info

LABEL	DESCRIPTION
Wireless Network Status	
Profile Name	This is the name of the profile you are currently using.
Network Name (SSID)	The SSID identifies the Service Set to which a wireless station is associated. This field displays the name of the wireless device to which the ZyXEL G-260 is associated.
AP MAC Address	This field displays the MAC address of the wireless device to which the ZyXEL G-260 is associated.
Network Type	This field displays the network type ( <b>Infrastructure(BSS)</b> or <b>Ad Hoc</b> ) of the wireless network.
Transmission Rate	This field displays the current transmission rate of the ZyXEL G-260 in megabits per second (Mbps).

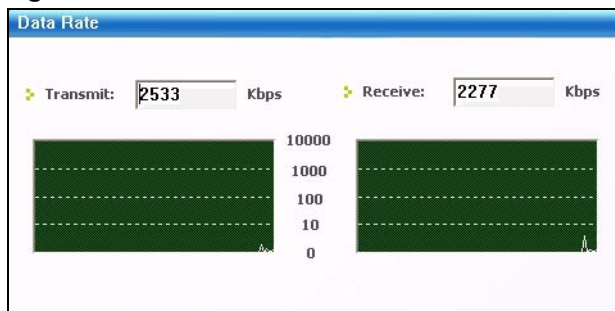
**Table 3** Link Info (continued)

LABEL	DESCRIPTION
Security	This field displays whether data encryption is activated ( <b>WEP</b> (WEP or 802.1x), <b>TKIP</b> (WPA/WPA-PSK), <b>AES</b> (WPA2/WPA2-PSK)) or inactive ( <b>Disabled</b> ).
Channel	This field displays the radio channel the ZyXEL G-260 is currently using.
Statistics	
Transmit Rate	This field displays the current data transmission rate in kilobits per second (Kbps).
Receive Rate	This field displays the current data receiving rate in kilobits per second (Kbps).
Authentication	This field displays the authentication method of the ZyXEL G-260.
Network Mode	This field displays the network standard ( <b>802.11b</b> or <b>802.11g</b> ) of the wireless device.
Total Transmit	This field displays the total number of data frames transmitted.
Total Receive	This field displays the total number of data frames received.
Link Quality	This field displays the quality of the signal of the ZyXEL G-260.
Trend Chart	Click this button to display the real-time statistics of the data rate in kilobits per second (Kbps).
Signal Strength	The status bar shows the strength of the signal.
Link Quality	The status bar shows the quality of the signal.

### 3.1.1 Trend Chart

Click **Trend Chart** in the **Link Info** screen to display a screen as shown below. Use this screen to view real-time data traffic statistics.

**Figure 11** Link Info: Trend Chart



The following table describes the labels in this screen.

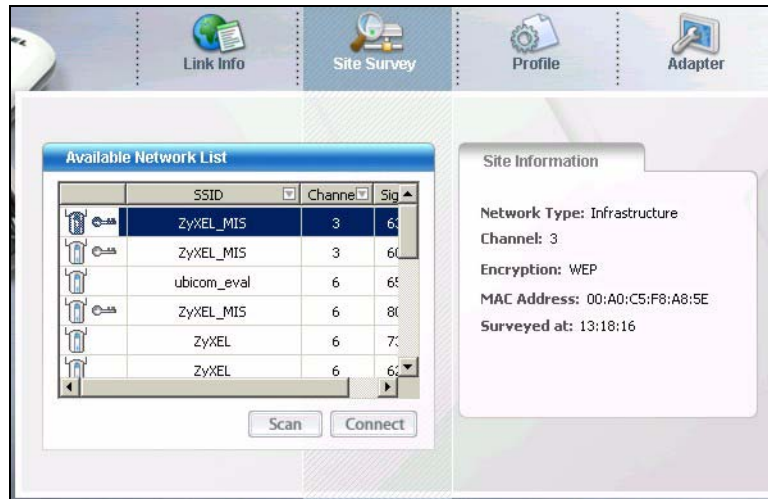
**Table 4** Link Info: Trend Chart

LABEL	DESCRIPTION
Transmit	This field displays the current data transmission rate in kilobits per second (Kbps).
Receive	This field displays the current data receiving rate in kilobits per second (Kbps).

## 3.2 The Site Survey Screen

Use the **Site Survey** screen to scan for and connect to a wireless network automatically.

**Figure 12** Site Survey



The following table describes the labels in this screen.

**Table 5** Site Survey

LABEL	DESCRIPTION
Available Network List	Click a column heading to sort the entries.
, , or 	denotes that the wireless device is in infrastructure mode and the wireless security is activated. denotes that the wireless device is in infrastructure mode but the wireless security is deactivated. denotes that the wireless device is in Ad-Hoc mode and the wireless security is activated. denotes that the wireless device is in Ad-Hoc mode but the wireless security is deactivated.
SSID	This field displays the SSID (Service Set Identifier) of each wireless device.
Channel	This field displays the channel number used by each wireless device.
Signal	This field displays the signal strength of each wireless device.
Scan	Click <b>Scan</b> to search for available wireless devices within transmission range.
Connect	Click <b>Connect</b> to associate to the selected wireless device.
Site Information	Click an entry in the <b>Available Network List</b> table to display the information of the selected wireless device.
Network Type	This field displays the network type ( <b>Infrastructure</b> or <b>Ad Hoc</b> ) of the wireless device.
Channel	This field displays the channel number used by each wireless device.
Encryption	This field shows whether data encryption is activated ( <b>WEP</b> (WEP or 802.1x), <b>WPA</b> , <b>WPA-PSK</b> , <b>WPA2</b> , <b>WPA2-PSK</b> ) or inactive ( <b>Disabled</b> ).

**Table 5** Site Survey (continued)

LABEL	DESCRIPTION
MAC address	This field displays the MAC address of the wireless device.
Surveyed at	This field displays the time when the wireless device is scanned.

### 3.2.1 Connecting to a WLAN Network

Follow the steps below to connect to a WLAN network using the **Site Survey** screen.

- 1 Click **Scan** to search for all available wireless networks within range.
- 2 To join a network, click an entry in the table to select a wireless network and then click **Connect**.
- 3 If the WEP encryption is activated for the selected wireless network, the **Security Settings** screen displays. You must set the related fields in the **Security Settings** screen to the same security settings as the associated wireless device. Refer to [Section 3.2.2 on page 37](#) for more information.  
Otherwise click the **Back** or **Exit** button and connect to another wireless network without data encryption.
- 4 Verify that you have successfully connected to the selected network and check the network information in the **Link Info** screen.

### 3.2.2 Security Settings

When you configure the ZyXEL G-260 to connect to a network with wireless security activated and the security settings are disabled on the ZyXEL G-260, the screen varies according to the encryption method used by the selected network.

#### 3.2.2.1 WEP Encryption

**Figure 13** Security Settings: WEP

The screenshot shows a window titled "Security Setting" with the following fields and values:

- WEP: 64 bits
- Encryption Type: Open
- Pass Phrase: (empty text field)
- Transmit Key: 1
- Key1: (empty text field)

At the bottom of the window, there are three buttons: "Back", "Next", and "Exit".

The following table describes the labels in this screen.

**Table 6** Security Settings: WEP

LABEL	DESCRIPTION
Security Setting	
WEP	<p>Select <b>64 Bits</b>, <b>128 Bits</b> or <b>256 Bits</b> to activate WEP encryption and then fill in the related fields.</p> <p>Select <b>Disable</b> to deactivate WEP encryption.</p>
Encryption Type	<p>Select an encryption type. Choices are <b>Open</b> and <b>Shared</b>. Refer to <a href="#">Section 2.3 on page 28</a> for more information.</p>
Pass Phrase	<p>When you select the radio button, enter a passphrase of up to 63 case-sensitive printable characters. As you enter the passphrase, the ZyXEL G-260 automatically generates four different WEP keys and displays it in the key field below. Refer to Section 2.2.1 on page 25 for more information.</p> <p>At the time of writing, you cannot use passphrase to generate 256-bit WEP keys.</p>
Transmit Key	<p>Select a default WEP key to use for data encryption. The key displays in the field below.</p>
Key x (where x is a number between 1 and 4)	<p>Select this option if you want to manually enter the WEP keys. Enter the WEP key in the field provided.</p> <p>If you select <b>64 Bits</b> in the <b>WEP</b> field.</p> <p>Enter either 10 hexadecimal digits in the range of "A-F", "a-f" and "0-9" (for example, 11AA22BB33) for HEX key type.</p> <p>or</p> <p>Enter 5 ASCII characters (case sensitive) ranging from "a-z", "A-Z" and "0-9" (for example, MyKey) for ASCII key type.</p> <p>If you select <b>128 Bits</b> in the <b>WEP</b> field,</p> <p>Enter either 26 hexadecimal digits in the range of "A-F", "a-f" and "0-9" (for example, 00112233445566778899AABBCC) for HEX key type</p> <p>or</p> <p>Enter 13 ASCII characters (case sensitive) ranging from "a-z", "A-Z" and "0-9" (for example, MyKey12345678) for ASCII key type.</p> <p>If you select <b>256 Bits</b> in the <b>WEP</b> field,</p> <p>Enter either 58 hexadecimal digits in the range of "A-F", "a-f" and "0-9" (for example, 0000111122223333444455556666777788889999AAAABBBBCCCC000011) for HEX key type</p> <p>or</p> <p>Enter 29 ASCII characters (case sensitive) ranging from "a-z", "A-Z" and "0-9" (for example, MyKey111122223333444455556678) for ASCII key type.</p> <p><b>Note:</b> The values for the WEP keys must be set up exactly the same on all wireless devices in the same wireless LAN.</p> <p>ASCII WEP keys are case sensitive.</p>
Back	<p>Click <b>Back</b> to go to the <b>Encryption Type</b> screen to change the encryption type</p>
Next	<p>Click <b>Next</b> to confirm your selections and advance to the <b>Save</b> screen. Refer to <a href="#">Section 3.2.3 on page 41</a>.</p>
Exit	<p>Click <b>Exit</b> to return to the <b>Profile List</b> screen</p>

### 3.2.2.2 WPA/WPA2

**Figure 14** Security Settings: WPA/WPA2

The following table describes the labels in this screen.

**Table 7** Security Settings: WPA/WPA2

LABEL	DESCRIPTION
Authentication Type	Select an authentication method from the drop down list. Options are <b>TLS</b> and <b>PEAP</b> .
Login Name	Enter a user name. This is the user name that you or an administrator set up on a <b>WPA/WPA2</b> server.
Certificate	This field is only available when you select <b>TLS</b> in the <b>Authentication Type</b> field. Specify the location and name of a certificate in the <b>Certificate</b> field or click <b>Browse</b> to locate it. <b>Note:</b> You must first have a wired connection to a network and obtain the certificate(s) from a certificate authority (CA). Consult your network administrator for more information.
Password	This field is not available when you select <b>TLS</b> in the <b>Authentication Type</b> field. Enter the password associated with the user name above.
Validate Server Certificate	Select the check box to check the certificate of the authentication server.
PEAP Inner EAP	This field is only available when you select <b>PEAP</b> in the <b>Authentication Type</b> field. Use the drop-down list box to select a PEAP protocol. Options are <b>MD5 CHALLENGE</b> , <b>TOKEN CARD</b> and <b>MS CHAP v2</b> .
Back	Click to go back to the <b>Encryption Type</b> screen.
Next	Click <b>Next</b> to confirm your selections and go to the <b>Save</b> screen. <a href="#">Section 3.2.3 on page 41</a>
Exit	Click <b>Exit</b> to discard changes and return to the <b>Site Survey</b> screen.

### 3.2.2.3 WPA-PSK/WPA2-PSK

**Figure 15** Security Settings: WPA-PSK/WPA2-PSK

The following table describes the labels in this screen.

**Table 8** Security Settings: WPA-PSK/WPA2-PSK

LABEL	DESCRIPTION
Security Setting	
Encryption Type	The encryption mechanisms used for WPA and WPA-PSK/WPA2-PSK are the same. The only difference between the two is that WPA-PSK/WPA2-PSK uses a simple common password, instead of user-specific credentials. The encryption types for WPA-PSK and WPA2-PSK are <b>TKIP</b> and <b>AES</b> respectively. Refer to <a href="#">Section 2.2.3 on page 26</a> for more information.
Pass Phrase	Type a passphrase from 8 to 63 case-sensitive ASCII characters (including spaces and symbols).
Back	Takes you back to the <b>Encryption Type</b> screen
Next	Confirms your selections and takes you to the <b>Save</b> screen. <a href="#">Section 3.2.3 on page 41</a> .
Exit	Takes you back to the <b>Site Survey</b> screen.


### 3.2.2.4 802.1x

**Figure 16** Security Settings: 802.1x



The following table describes the labels in this screen.

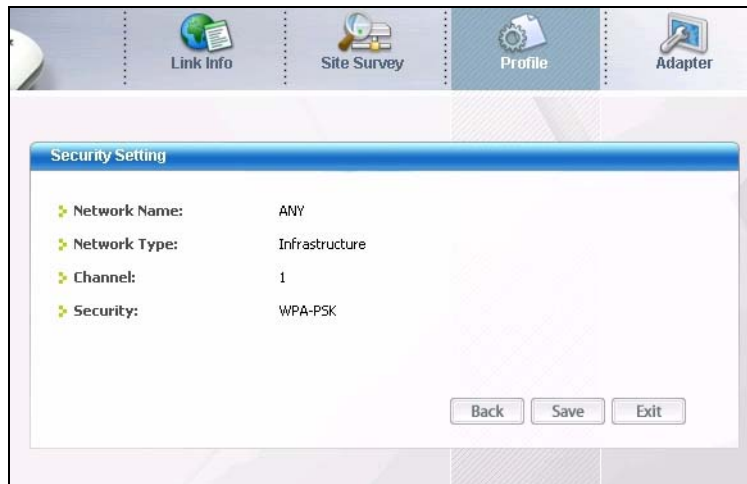
**Table 9** Security Settings: 802.1x

LABEL	DESCRIPTION
Authentication Type	Select an authentication method from the drop down list. Options are <b>TLS</b> and <b>PEAP</b> .
Login Name	Enter a user name. This is the user name that you or an administrator set up on a RADIUS server.
Password	This field is not available when you select <b>TLS</b> in the <b>Authentication Type</b> field. Enter the password associated with the user name above.
Certificate	This field is only available when you select <b>TLS</b> in the <b>Authentication Type</b> field. Specify the location and name of a certificate in the <b>Certificate</b> field or click <b>Browse</b> to locate it. <b>Note:</b> You must first have a wired connection to a network and obtain the certificate(s) from a certificate authority (CA). Consult your network administrator for more information.
Browse	This field is only available when you select <b>TLS</b> in the <b>Authentication Type</b> field. Click this button to display the <b>Select Certificate</b> screen, select a certificate and click <b>OK</b> .
Validate Server Certificate	Select the check box to check the certificate of the authentication server.
PEAP Inner EAP	This field is only available when you select <b>PEAP</b> in the <b>Authentication Type</b> field. Use the drop-down list box to select a PEAP protocol. Options are <b>MD5 CHALLENGE</b> , <b>TOKEN CARD</b> and <b>MS CHAP v2</b> .
Save	Click <b>Save</b> to save the changes back to the ZyXEL G-260 and display the <b>Link Info</b> screen. Otherwise, click the close (  ) button to discard changes and go back to the <b>Site Survey</b> screen.

### 3.2.3 Confirm Save Screen

Use the **Confirm Save** screen to confirm and save the security settings.

**Figure 17** Confirm Save Screen



The following table describes the labels in this screen.

**Table 10** Confirm Save Screen

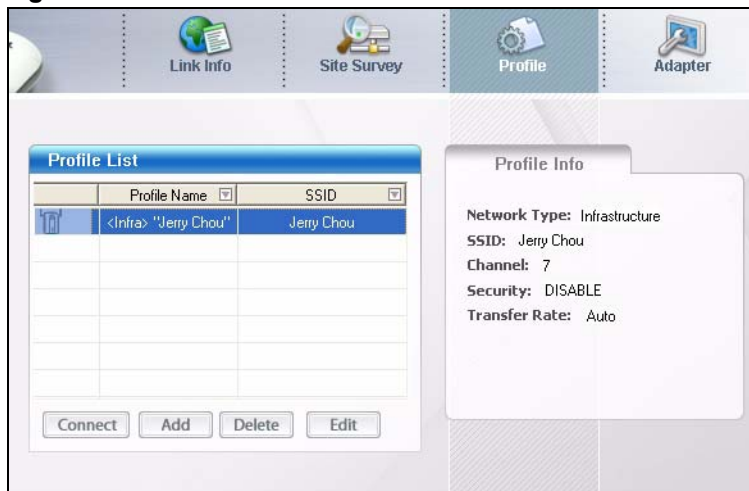
LABEL	DESCRIPTION
Security Setting	
Network Name	This field displays the <b>SSID</b> previously entered.
Network Type	This field displays the network type ( <b>Infrastructure</b> or <b>Ad Hoc</b> ) of the wireless device.
Channel	This field displays the channel number used by the profile.
Security	This field shows whether data encryption is activated ( <b>WEP, WPA, WPA2, WPA-PSK, WPA2-PSK</b> or <b>802.1x</b> ) or inactive ( <b>Disabled</b> ).
Back	Click <b>Back</b> to return to the <b>Encryption/Authentication</b> screen
Save	Click <b>Save</b> to save the changes back to the ZyXEL G-260 and display the <b>Link Info</b> screen. Otherwise, click <b>Back</b> to go back to the <b>Encryption Type</b> screen or click <b>Exit</b> to discard changes and go back to the <b>Site Survey</b> screen.
Exit	Click <b>Exit</b> to discard changes and return to the <b>Site Survey</b> screen.

### 3.3 The Profile Screen

Click the **Profile** tab in the ZyXEL Utility program to display the **Profile** screen as shown next.









The profile function allows you to save the wireless network settings in this screen, or use one of the pre-configured network profiles.

**Figure 18** Profile Screen



The following table describes the labels in this screen.

**Table 11** Profile Screen

LABEL	DESCRIPTION
Profile List	Click a column heading to sort the entries.
 ,  ,  or 	 denotes that the wireless device is in infrastructure mode and the wireless security is activated.  denotes that the wireless device is in infrastructure mode but the wireless security is deactivated.  denotes that the wireless device is in Ad-Hoc mode and the wireless security is activated.  denotes that the wireless device is in Ad-Hoc mode but the wireless security is deactivated.
Profile Name	This is the name of the pre-configured profile.
SSID	This is the SSID of the wireless network to which the selected profile associate.
Connect	To use a previously saved network profile, select a pre-configured profile name in the table and click <b>Connect</b> .
Add	To add a new profile into the table, click <b>Add</b> .
Delete	To delete an existing wireless network configuration, select a profile in the table and click <b>Delete</b> .
Edit	To edit an existing wireless network configuration, select a profile in the table and click <b>Edit</b> .
Profile Info	The following fields display detail information of the selected profile in the <b>Profile List</b> table.
Network Type	This field displays the network type ( <b>Infrastructure</b> or <b>Ad Hoc</b> ) of the profile.
SSID	This field displays the SSID (Service Set Identifier) of the profile.
Channel	This field displays the channel number used by the profile.
Security	This field shows whether data encryption is activated ( <b>WEP</b> (WEP or 802.1x), <b>WPA</b> , <b>WPA-PSK</b> , <b>WPA2</b> , <b>WPA2-PSK</b> ) or inactive ( <b>Disabled</b> ).
Transfer Rate	This field displays the transfer speed of the selected profile in megabits per second (Mbps).

### 3.3.1 Adding a New Profile

Follow the steps below to add a new profile.

- 1 Click **Add** in the **Profile** screen. An **Add New Profile** screen displays as shown next. Click **Next** to continue.

**Figure 19** Profile: Add New Profile

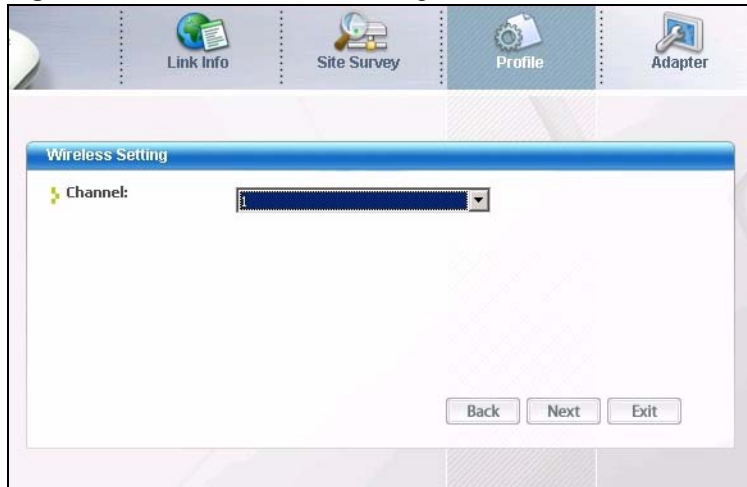
The following table describes the labels in this screen.

**Table 12** Profile: Add New Profile

LABEL	DESCRIPTION
Add New Profile	
Profile Name	Enter a descriptive name in this field.
SSID	Select an available wireless device in the <b>Scan Info</b> table and click <b>Select</b> , or enter the SSID of the wireless device to which you want to associate in this field manually. Otherwise, leave this field blank to have the ZyXEL G-260 associate to or roam between any infrastructure wireless networks.
Network Type	Select the <b>Infrastructure</b> radio button to associate to an AP. Select the <b>Ad-Hoc</b> radio button to associate to a peer computer.
Next	Click <b>Next</b> to go to the next screen.
Exit	Click <b>Exit</b> to go back to the previous screen without saving.
Scan Info	This table displays the information of the available wireless networks within the transmission range.
	denotes that the wireless device is in infrastructure mode and the wireless security is activated. denotes that the wireless device is in infrastructure mode but the wireless security is deactivated. or denotes that the wireless device is in Ad-Hoc mode and the wireless security is activated. denotes that the wireless device is in Ad-Hoc mode but the wireless security is deactivated.
SSID	This field displays the SSID (Service Set Identifier) of each wireless device.
Scan	Click <b>Scan</b> to search for available wireless devices within transmission range.
Select	Select an available wireless device in the table and click <b>Select</b> to add it to this profile. Whenever you activate this profile, the ZyXEL G-260 associates to the selected wireless network only.

- 2** If you select the **Infrastructure** network type in the previous screen, skip to step **3**. If you select the **Ad-Hoc** network type in the previous screen, a screen displays as follows. Select a channel number and wireless LAN mode and click **Next** to continue.

**Figure 20** Profile: Wireless Setting: Select a Channel

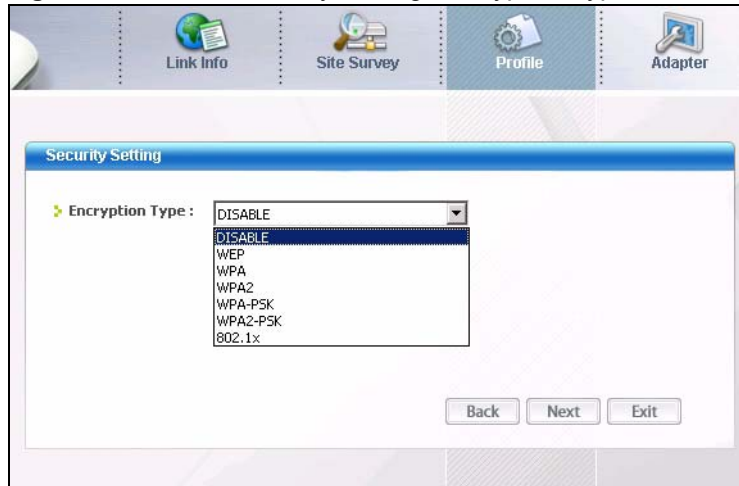


The following table describes the labels in this screen.

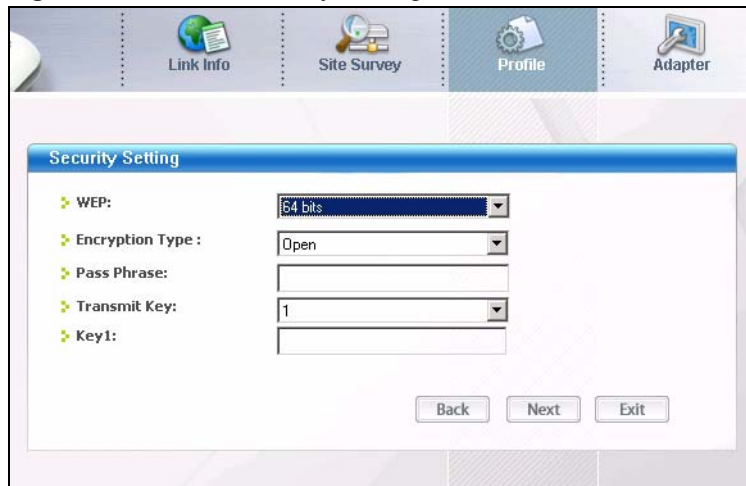
**Table 13** Profile: Wireless Setting: Select a Channel

LABEL	DESCRIPTION
Wireless Setting	
Channel	Select a channel number from the drop-down list box. To associate to an ad-hoc network, you must use the same channel as the peer computer.
Back	Click <b>Back</b> to return to the <b>Add New Profile</b> screen.
Next	Click <b>Next</b> to confirm your selection and advance to the <b>Encryption Type</b> screen.
Exit	Click <b>Exit</b> to discard changes and return to the <b>Add New Profile</b> screen.

- 3** If you select **Infrastructure** network type in the first screen, select **WEP**, **WPA-PSK**, **WPA2-PSK**, **WPA** or **WPA2** from the drop-down list box to enable data encryption. If you select **Ad-Hoc** network type in the first screen, you can only use **WEP** encryption method. Otherwise, select **Disable** to allow the ZyXEL G-260 to communicate with the access points or other peer wireless computers without any data encryption and skip to step **5**.

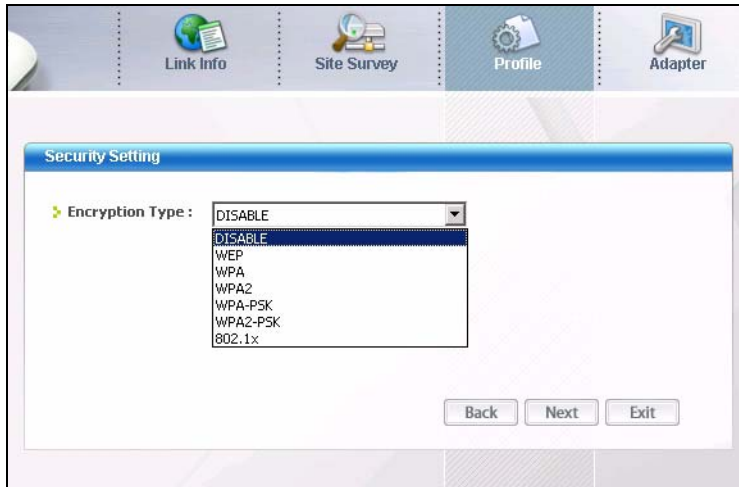
**Figure 21** Profile: Security Setting: Encryption Type

- 4 The screen varies depending on the encryption method you select in the previous screen. The settings must be exactly the same on the APs or other peer wireless computers as they are on the ZyXEL G-260. Refer to [Section 3.2.2 on page 37](#) for detailed information on wireless security configuration.

**Figure 22** Profile: Security Setting

- 5 This read-only screen shows a summary of the new profile settings. Verify that the settings are correct. Click **Save** to save and go to the next screen. Click **Back** to return to the previous screen. Otherwise, click **Exit** to go back to the **Profile** screen without saving.

**Figure 23** Profile: Confirm New Settings



**6** To use this network profile, click the **Activate Now** button. Otherwise, click the **Activate Later** button.

**Note:** Once you activate a profile, the ZyXEL Utility will use that profile the next time it is started.

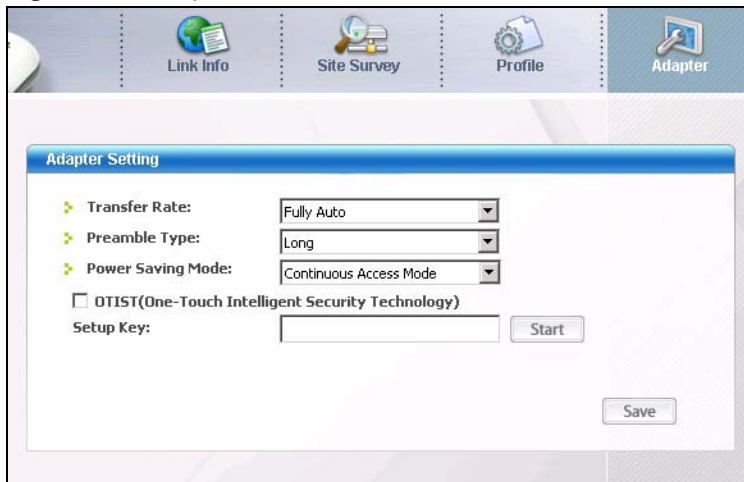
**Figure 24** Profile: Activate the Profile



### 3.4 The Adapter Screen

To set the advanced features on the ZyXEL G-260, click the **Adapter** tab.

**Figure 25** Adapter Screen



The following table describes the labels in this screen.

**Table 14** Adapter

LABEL	DESCRIPTION
Adapter	
Transfer Rate	Select a transfer speed from the drop-down list box. Choose from <b>Fully Auto</b> (default), <b>1 Mbps</b> , <b>2 Mbps</b> , <b>5.5 Mbps</b> , <b>6 Mbps</b> , <b>9 Mbps</b> , <b>12 Mbps</b> , <b>18 Mbps</b> , <b>24 Mbps</b> , <b>36 Mbps</b> , <b>48 Mbps</b> , and <b>54 Mbps</b> .
Preamble Type	Select a preamble type. Choices are <b>Long</b> , <b>Short</b> and <b>Auto</b> .The default setting is <b>Long</b> . Refer to <a href="#">Section 2.4 on page 28</a> for more information.
Power Saving Mode	Select <b>Maximum Power Save</b> or <b>Fast Power Save</b> to save power (especially for notebook computers). This forces the ZyXEL G-260 to go to sleep mode when it is not transmitting data. When you select <b>Continuous Access Mode</b> , the ZyXEL G-260 will never go to sleep mode.
OTIST (One-Touch Intelligent Security)	Select this check box to enable auto security.
Setup Key	Enter the same setup key (up to eight printable characters) as the ZyXEL AP or wireless router to which you want to associate. The default OTIST setup key is "01234567". <b>Note:</b> If you change the OTIST setup key on the ZyXEL AP or wireless router, you must also make the same change here.
Save	Click <b>Save</b> to save the changes back to the ZyXEL G-260 and return to the <b>Link Info</b> screen.





# CHAPTER 4

## Maintenance

This chapter describes how to uninstall or upgrade the ZyXEL Utility.

### 4.1 The About Screen

The **About** screen displays related version numbers of the ZyXEL G-260. To display the screen as shown below, click the about ( ? ) button.

**Figure 26** About



The following table describes the read-only fields in this screen.

**Table 15** About

LABEL	DESCRIPTION
Driver Version	This field displays the version number of the ZyXEL G-260 driver.
Utility Version	This field displays the version number of the ZyXEL Utility.

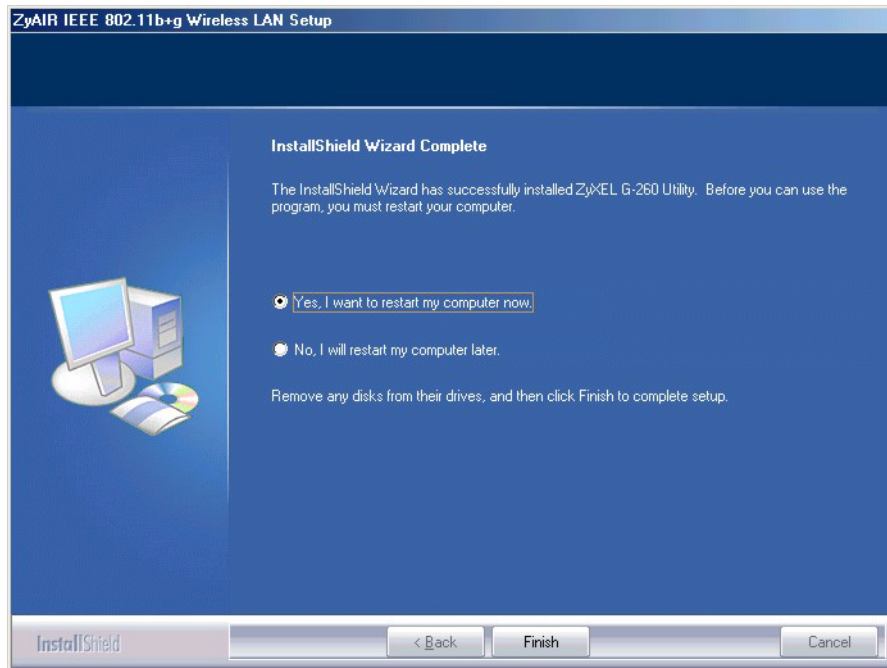
### 4.2 Uninstalling the ZyXEL Utility

Follow the steps below to remove (or uninstall) the ZyXEL Utility from your computer.

- 1 Click **Start, Programs, ZyXEL G-260 Utility, Uninstall ZyXEL G-260 Utility**.
- 2 When prompted, click **OK** or **Yes** to remove the driver and the utility software.

**Figure 27** Uninstall: Confirm

- 3 Click **Finish** to complete uninstalling the software and restart the computer when prompted.

**Figure 28** Uninstall: Finish

## 4.3 Upgrading the ZyXEL Utility

**Note:** Before you uninstall the ZyXEL Utility, take note of the current network configuration.

To perform the upgrade, follow the steps below.

- 1 Download the latest version of the utility from the ZyXEL web site and save the file on your computer.
- 2 Follow the steps in [Section 4.2 on page 50](#) to remove the current ZyXEL Utility from your computer.
- 3 Restart your computer when prompted.
- 4 Disconnect the ZyXEL G-260 from your computer.
- 5 Double-click on the setup program for the new utility to start the ZyXEL Utility installation.

- 6 Insert the ZyXEL G-260 and check the version numbers in the **About** screen to make sure the new utility is installed properly.



# CHAPTER 5

## Troubleshooting

This chapter covers potential problems and the possible remedies. After each problem description, some instructions are provided to help you to diagnose and to solve the problem.

### 5.1 Problems Starting the ZyXEL Utility Program

**Table 16** Troubleshooting Starting ZyXEL Utility Program

PROBLEM	CORRECTIVE ACTION
Cannot start the ZyXEL Wireless LAN Utility	<p>Make sure the ZyXEL G-260 is properly inserted and the LED is on.</p> <p>Use the <b>Device Manager</b> to check for possible hardware conflicts. Click <b>Start, Settings, Control Panel, System, Hardware</b> and <b>Device Manager</b>. Verify the status of the ZyXEL G-260 under <b>Network Adapter</b>. (Steps may vary depending on the version of Windows).</p> <p>Install the ZyXEL G-260 in another computer.</p> <p>If the error persists, you may have a hardware problem. In this case, you should contact your local vendor.</p>
The ZyXEL Utility icon does not display.	<p>If you install the Funk Odyssey Client software on the computer, uninstall (remove) both the Funk Odyssey Client software and ZyXEL utility, and then install the ZyXEL utility again after restarting the computer.</p> <p>If you use the Windows XP configuration tool and the ZyXEL Utility to configure the ZyXEL G-260 at the same time, the ZyXEL Utility icon does not display. You need to disable the Windows XP configuration tool (refer to <a href="#">Appendix B on page 58</a> for more information).</p>

### 5.2 Problem with the Link Status

**Table 17** Troubleshooting Link Quality

PROBLEM	CORRECTIVE ACTION
The link quality and/or signal strength is poor all the time.	<p>Search and connect to another AP with a better link quality using the <b>Site Survey</b> screen.</p> <p>Move your computer closer to the AP or the peer computer(s) within the transmission range.</p> <p>There may be too much radio interference (for example microwave or another AP using the same channel) around your wireless network. Relocate or reduce the radio interference.</p>

## 5.3 Problems Communicating With Other Computers

**Table 18** Troubleshooting Communication Problem

PROBLEM	CORRECTIVE ACTION
In wireless station mode, the computer with the ZyXEL G-260 installed cannot communicate with the other computer(s).	<p>In Infrastructure Mode</p> <ul style="list-style-type: none"><li>• Make sure that the AP and the associated computers are turned on and working properly.</li><li>• Make sure the ZyXEL G-260 computer and the associated AP use the same SSID.</li><li>• Change the AP and the associated wireless clients to use another radio channel if interference is high.</li><li>• Make sure that the computer and the AP share the same security option and key. Verify the settings in the <b>Profile Security Settings</b> screen.</li></ul> <p>In Ad-Hoc (IBSS) Mode</p> <ul style="list-style-type: none"><li>• Verify that the peer computer(s) is turned on.</li><li>• Make sure the ZyXEL G-260 computer and the peer computer(s) are using the same SSID and channel.</li><li>• Make sure that the computer and the peer computer(s) share the same security settings.</li><li>• Change the wireless clients to use another radio channel if interference is high.</li></ul>

# Appendix A

## Product Specifications

**Table 19** Product Specifications

<b>PHYSICAL AND ENVIRONMENTAL</b>	
Product Name	ZyXEL G-260 802.11g Wireless USB Adapter
Interface	USB 2.0 bus-powered
Standards	IEEE 802.11b IEEE 802.11g
Network Architectures	Infrastructure Ad-Hoc
Security	64/128/256-bit WEP Encryption
Operating Temperature	0 ~ 50 degrees Centigrade
Storage Temperature	-10 ~ 60 degrees Centigrade
Operating Humidity	20 ~ 95% (non-condensing)
Storage Humidity	20 ~ 95% (non-condensing)
Power Consumption	TX: <480mA RX: <430mA
Voltage	5V
Weight	25.8 g
Dimension	(L) 95 mm × (M) 30 mm × (H) 16 mm
<b>RADIO SPECIFICATIONS</b>	
Media Access Protocol	IEEE 802.11
Frequency	USA (FCC) & Canada 11 Channels: 2.412GHz~2.462GHz Europe (ETSI) 13 Channels: 2.412GHz~2.472GHz Japan (TELEC) 14 Channels: 2.412GHz~2.483GHz
Data Rate	11g: Orthogonal Frequency Division Multiplexing (OFDM): *125, 54, 48, 36, 24, 18, 12, 9, 6 Mbps 11b: 11, 5.5, 2, 1 Mbps
Modulation	11g: OFDM (64QAM, 16QAM, QPSK, BPSK) 11b: PBCC, Direct Sequence Spread Spectrum (DSSS), (CCK, DQPSK, DBPSK)
Output Power	11g: 64QAM 14dBm typical +/-3dBi 11b: DBPSK, DQPSK, CCK 17dBm typical +/-3dBi
RX Sensitivity	11g (OFDM): 54 Mbps: < -68 dBm (typical) 11b (CCK): 11 Mbps: < -83 dBm (typical)
<b>SOFTWARE SPECIFICATIONS</b>	
Device Drivers	Microsoft Windows 98 Second Edition, Windows ME, Windows 2000, Windows XP
Roaming	IEEE 802.11b/g compliant
WEP	64/128/256-bit WEP encryption





# APPENDIX B

## Disable Windows XP Wireless LAN Configuration Tool

Windows XP includes a configuration tool (also known as Wireless Zero Configuration (WZC)) for wireless devices.

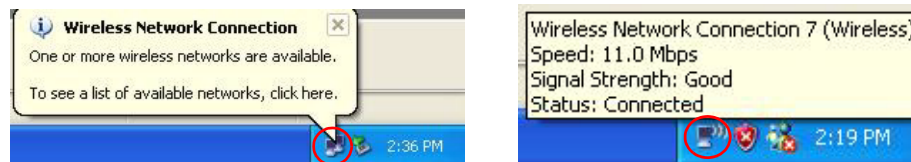
Follow the steps below to disable the configuration tool in Windows XP after you install the ZyXEL Utility. The screen varies depending on the version of Windows XP service pack.

### Via the Wireless Network System Tray Icon

If the network icon for wireless connections is not present in the system tray, see the next section.

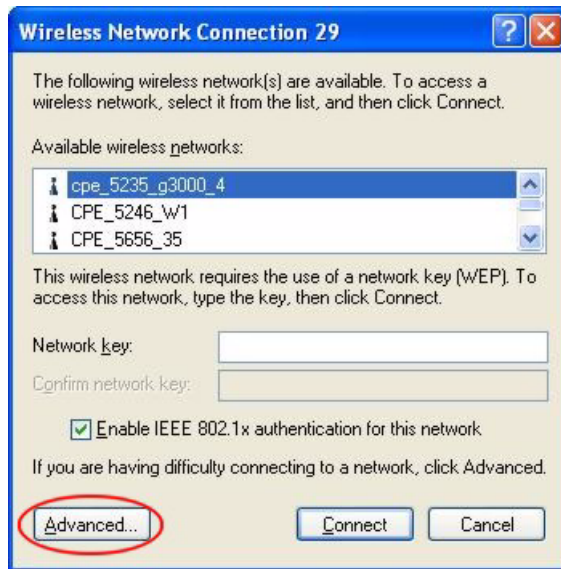
- 1 Double-click the network icon for wireless connections in the system tray.

**Figure 29** Windows XP: System Tray Icon



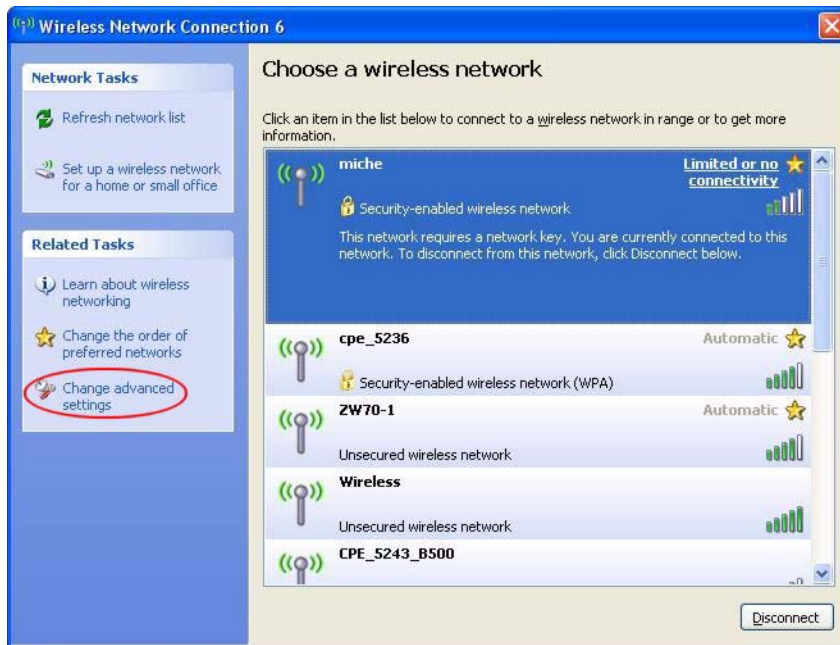
- 2 Windows XP SP1: When a **Wireless Network Connection** window displays, click **Advanced...**

**Figure 30** Windows XP SP1: Wireless Network Connection

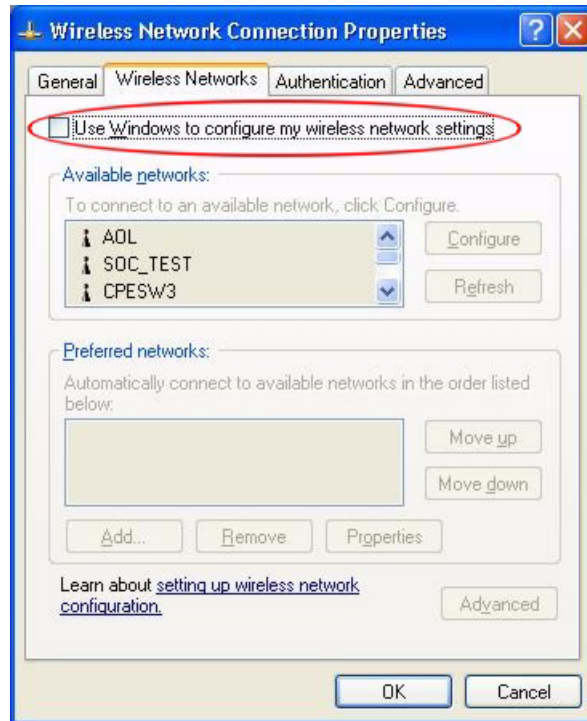
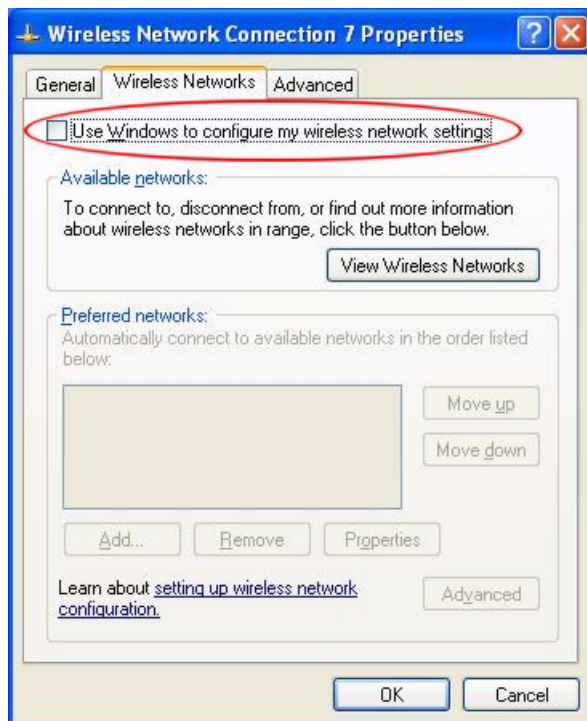


Windows XP SP2: When a **Wireless Network Connection** window displays, click **Change advanced settings** under **Related Tasks** and then the **Wireless Networks** tab.

**Figure 31** Windows XP SP2: Wireless Network Connection



**3** In the **Wireless Network Connection Properties** window, make sure the **Use Windows to configure my wireless network settings** check box is not selected. Click **OK**.

**Figure 32** Windows XP SP1: Wireless Network Connection Properties**Figure 33** Windows XP SP2: Wireless Network Connection Properties

## Via the Control Panel

- 1 If the icon for the wireless network connection is not in the system tray, click **Start**, **Control Panel** and double-click **Network Connections**.
- 2 Double-click on the icon for wireless network connection to display a status window as shown below.
- 3 Click **Properties** and click the **Wireless Networks** tab.

**Figure 34** Windows XP SP1: Wireless Network Connection Status



**Figure 35** Windows XP SP2: Wireless Network Connection Status

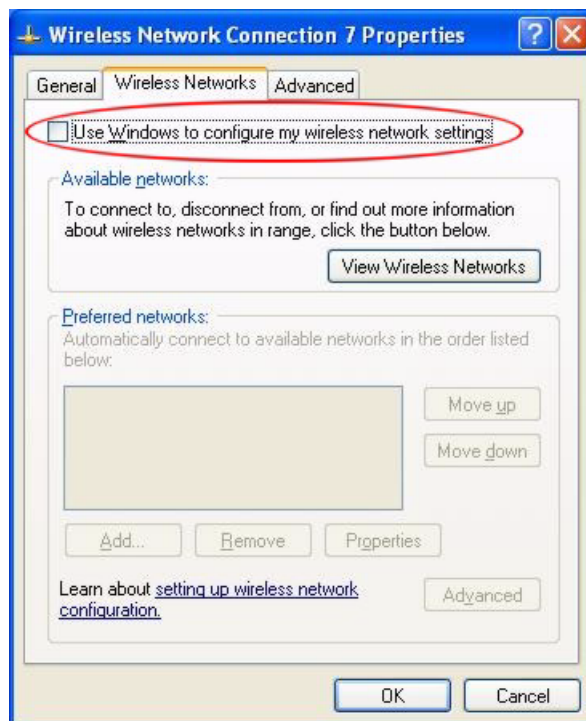


- 4 In the **Wireless Network Connection Properties** window, make sure the **Use Windows to configure my wireless network settings** check box is not selected. Click **OK**.

**Figure 36** Windows XP SP1: Wireless Network Connection Properties



**Figure 37** Windows XP SP2: Wireless Network Connection Properties





# APPENDIX C

## Management with Wireless Zero Configuration

This appendix shows you how to manage your ZyXEL wireless LAN adapter using the Windows XP wireless zero configuration tool.

Be sure you have the Windows XP service pack 2 installed on your computer. Otherwise, you should at least have the Windows XP service pack 1 already on your computer and download the support patch for WPA from the Microsoft web site.

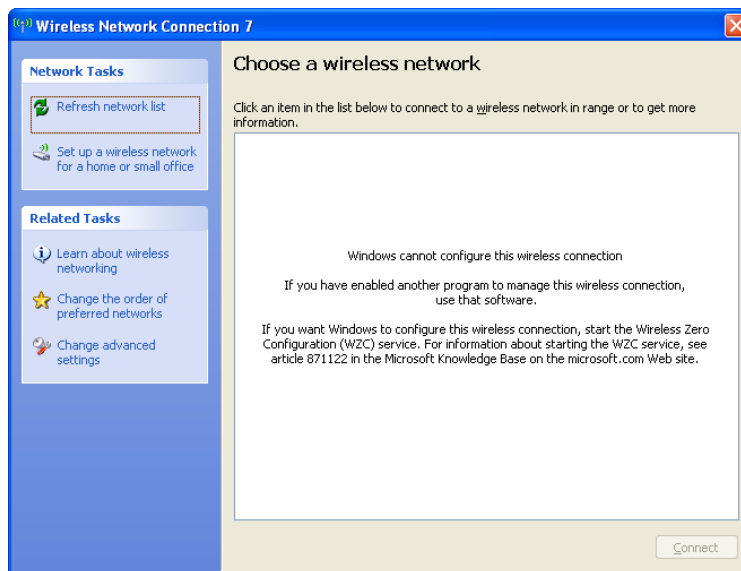
Windows XP SP2 screen shots are shown unless otherwise specified. Click the help icon ( ? ) in most screens, move the cursor to the item that you want the information about and click to view the help.

### Activating Wireless Zero Configuration

Make sure the **Use Windows to configure my wireless network settings** check box is selected in the **Wireless Network Connection Properties** screen. Refer to [Appendix B on page 58](#).

If you see the following screen, refer to article 871122 on the Microsoft web site for information on starting WZC.

**Figure 38** Windows XP SP2: WZC Not Available





## Connecting to a Wireless Network

- 1 Double-click the network icon for wireless connections in the system tray to open the Wireless Network Connection Status screen.

**Figure 39** Windows XP SP2: System Tray Icon



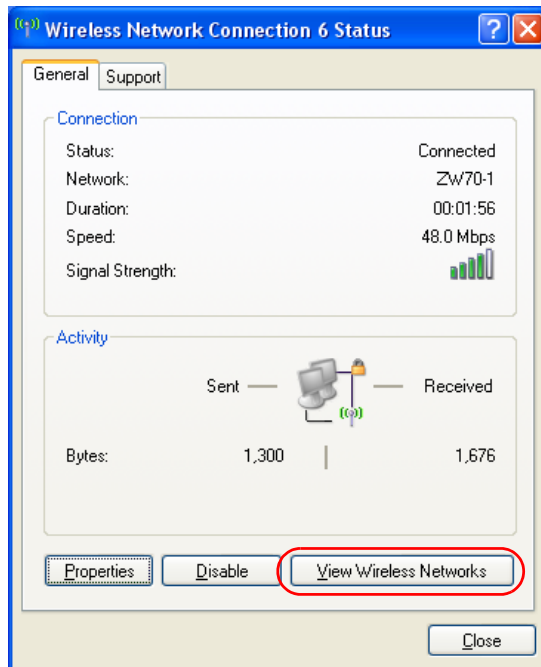
The type of the wireless network icon in Windows XP SP2 indicates the status of the ZyXEL wireless LAN adapter. Refer to the following table for details.

**Table 20** Windows XP SP2: System Tray Icon

ICON	DESCRIPTION
	The ZyXEL wireless LAN adapter is connected to a wireless network.
	The ZyXEL wireless LAN adapter is in the process of connecting to a wireless network.
	The connection to a wireless network is limited because the network did not assign a network address to the computer.
	The ZyXEL wireless LAN adapter is not connected to a wireless network.

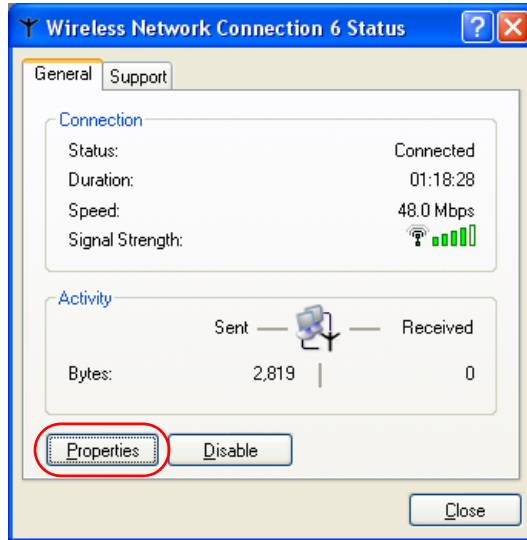
- 2 Windows XP SP2: In the **Wireless Network Connection Status** screen, click **View Wireless Networks** to open the **Wireless Network Connection** screen.

**Figure 40** Windows XP SP2: Wireless Network Connection Status



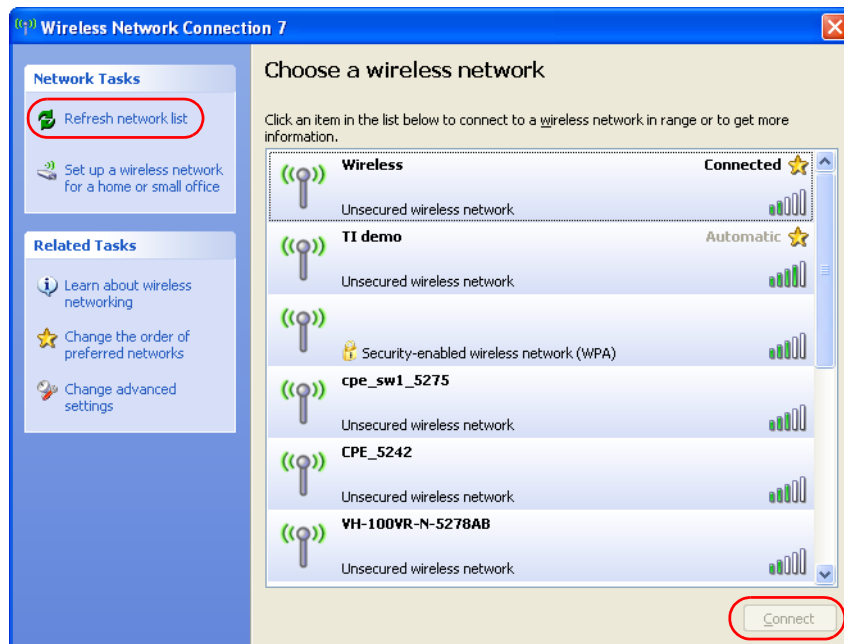
Windows XP SP1: In the **Wireless Network Connection Status** screen, click **Properties** and the **Wireless Networks** tab to open the **Wireless Network Connection Properties** screen.

**Figure 41** Windows XP SP1: Wireless Network Connection Status






- Windows XP SP2: Click **Refresh network list** to reload and search for available wireless devices within transmission range. Select a wireless network in the list and click **Connect** to join the selected wireless network.

**Figure 42** Windows XP SP2: Wireless Network Connection



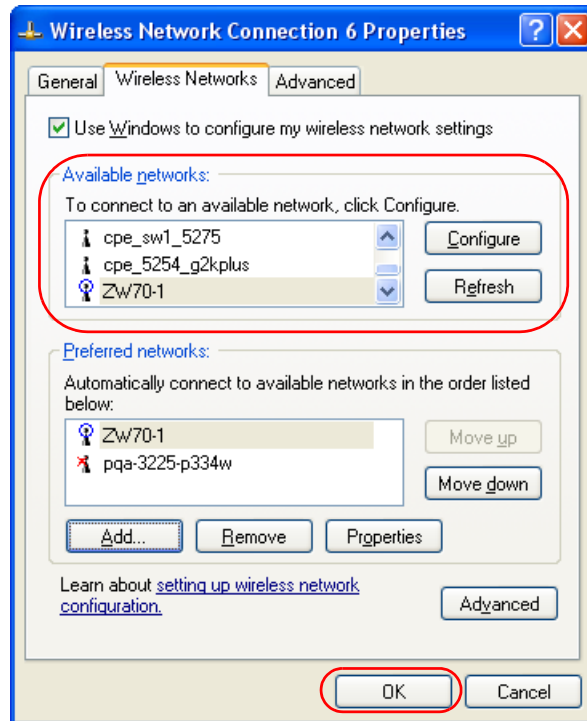
The following table describes the icons in the wireless network list.

**Table 21** Windows XP SP2: Wireless Network Connection

ICON	DESCRIPTION
	This denotes that wireless security is activated for the wireless network.
	This denotes that this wireless network is your preferred network. Ordering your preferred networks is important because the ZyXEL wireless LAN adapter tries to associate to the preferred network first in the order that you specify. Refer to the section on ordering the preferred networks for detailed information.
	This denotes the signal strength of the wireless network. Move your cursor to the icon to see details on the signal strength.

Windows XP SP1: Click **Refresh** to reload and search for available wireless devices within transmission range. Select a wireless network in the **Available networks** list, click **Configure** and set the related fields to the same security settings as the associated AP to add the selected network into the **Preferred** networks table. Click **OK** to join the selected wireless network. Refer to the section on security settings (discussed later) for more information.

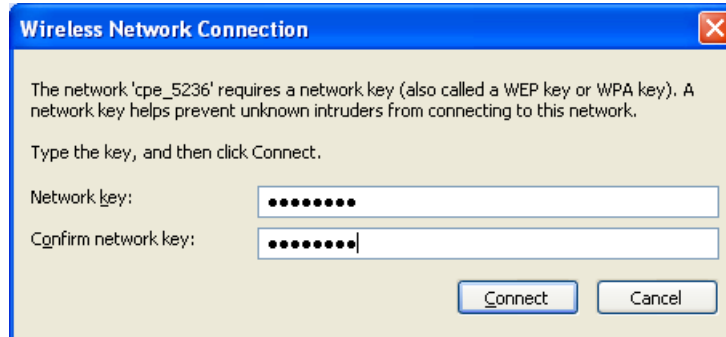
**Figure 43** Windows XP SP1: Wireless Network Connection Properties



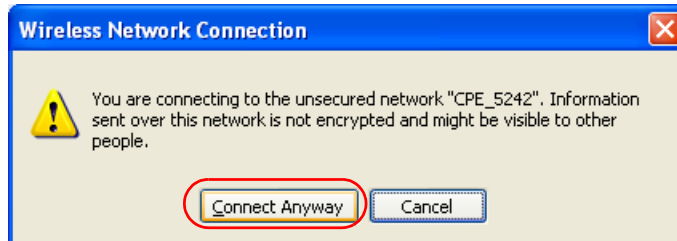
4. Windows XP SP2: If the wireless security is activated for the selected wireless network, the **Wireless Network Connection** screen displays. You must set the related fields in the **Wireless Network Connection** screen to the same security settings as the associated AP and click **Connect**. Refer to the section about security settings for more information. Otherwise click **Cancel** and connect to another wireless network without data encryption.

If there is no security activated for the selected wireless network, a warning screen appears. Click **Connect Anyway** if wireless security is not your concern.

**Figure 44** Windows XP SP2: Wireless Network Connection: WEP or WPA-PSK



**Figure 45** Windows XP SP2: Wireless Network Connection: No Security



- 5 Verify that you have successfully connected to the selected network and check the connection status in the wireless network list or the connection icon in the **Preferred networks** or **Available networks** list.

The following table describes the connection icons.

**Table 22** Windows XP: Wireless Networks

ICON	DESCRIPTION
	This denotes the wireless network is an available wireless network.
	This denotes the ZyXEL wireless LAN adapter is associated to the wireless network.
	This denotes the wireless network is not available.

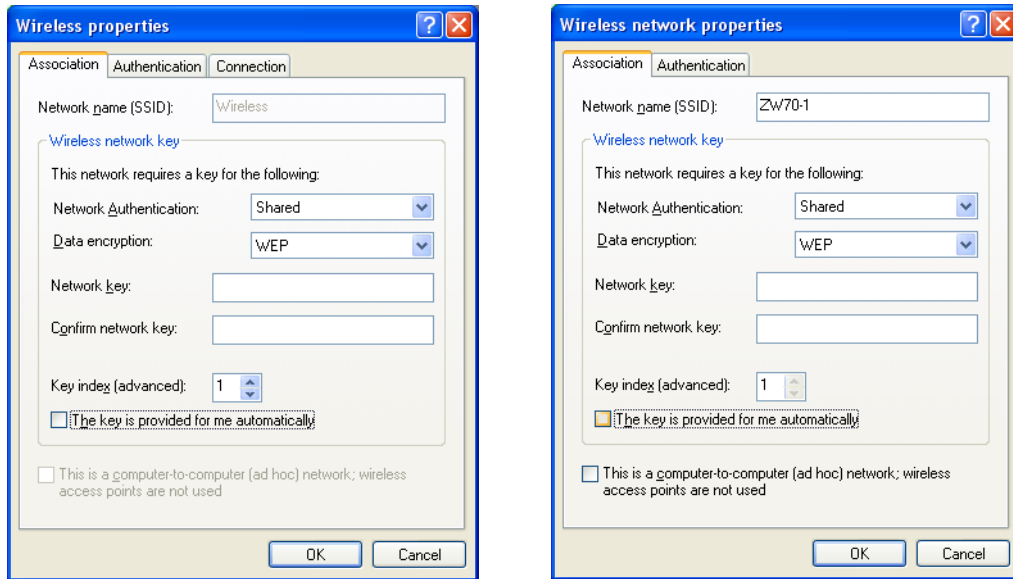
## Security Settings

When you configure the ZyXEL wireless LAN adapter to connect to a secure network but the security settings are not yet enabled on the ZyXEL wireless LAN adapter, you will see different screens according to the authentication and encryption methods used by the selected network.

## Association

Select a network in the Preferred networks list and click Properties to view or configure security.

**Figure 46** Windows XP: Wireless (network) properties: Association



The following table describes the labels in this screen.

**Table 23** Windows XP: Wireless (network) properties: Association

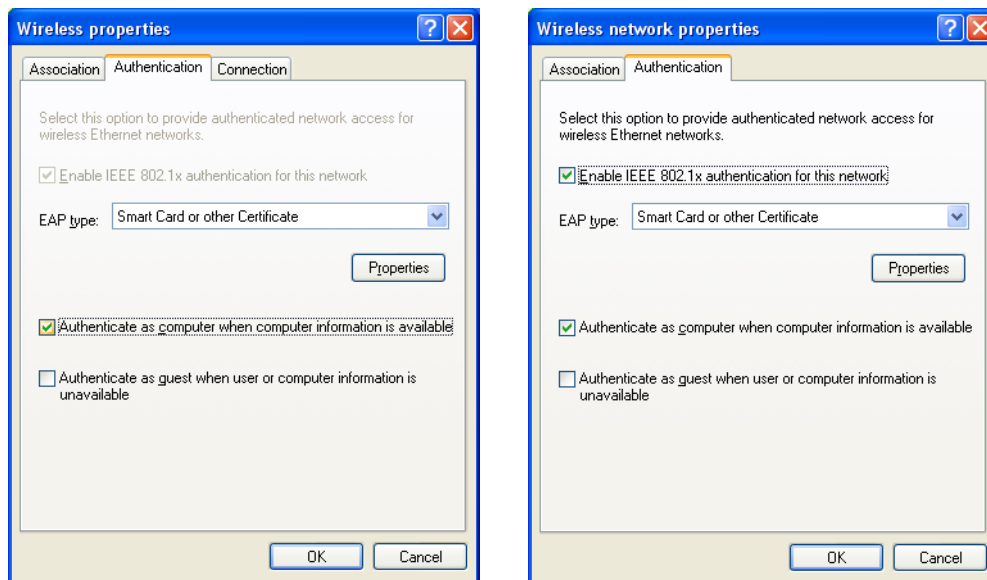
LABEL	DESCRIPTION
Network name (SSID)	This field displays the SSID (Service Set Identifier) of each wireless network.
Network Authentication	This field automatically shows the authentication method ( <b>Share</b> , <b>Open</b> , <b>WPA</b> or <b>WPA-PSK</b> ) used by the selected network.
Data Encryption	This field automatically shows the encryption type ( <b>TKIP</b> , <b>WEP</b> or <b>Disable</b> ) used by the selected network.
Network Key	Enter the pre-shared key or WEP key. The values for the keys must be set up exactly the same on all wireless devices in the same wireless LAN.
Confirm network key	Enter the key again for confirmation.
Key index (advanced)	Select a default WEP key to use for data encryption. This field is available only when the network use <b>WEP</b> encryption method and the <b>The key is provided for me automatically</b> check box is not selected.
The key is provided for me automatically	If this check box is selected, the wireless AP assigns the ZyXEL wireless LAN adapter a key.

**Table 23** Windows XP: Wireless (network) properties: Association (continued)

LABEL	DESCRIPTION
This is a computer-to-computer (ad hoc) network; wireless access points are not used	If this check box is selected, you are connecting to another computer directly.
OK	Click <b>OK</b> to save your changes.
Cancel	Click <b>Cancel</b> to leave this screen without saving any changes you may have made.

## Authentication

Click the **Authentication** tab in the **Wireless (network) properties** screen to display the screen shown next. The fields on this screen are grayed out when the network is in Ad-Hoc mode or data encryption is disabled.

**Figure 47** Windows XP: Wireless (network) properties: Authentication

The following table describes the labels in this screen.

**Table 24** Windows XP: Wireless (network) properties: Authentication

LABEL	DESCRIPTION
Enable IEEE 802.1x authentication for this network	This field displays whether the IEEE 802.1x authentication is active. If the network authentication is set to <b>Open</b> in the previous screen, you can choose to disable or enable this feature.
EAP Type	Select the type of EAP authentication. Options are <b>Protected EAP (PEAP)</b> and <b>Smart Card or other Certificate</b> .
Properties	Click this button to open the properties screen and configure certificates. The screen varies depending on what you select in the <b>EAP type</b> field.

**Table 24** Windows XP: Wireless (network) properties: Authentication (continued)

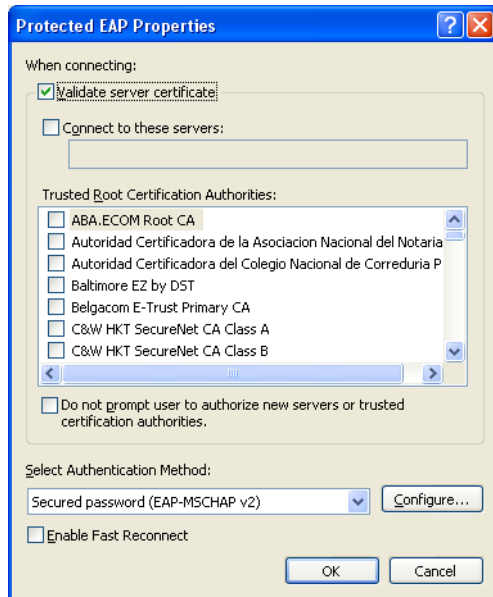
LABEL	DESCRIPTION
Authenticate as computer when computer information is available	Select this check box to have the computer send its information to the network for authentication when a user is not logged on.
Authenticate as guest when user or computer information is unavailable	Select this check box to have the computer access to the network as a guest when a user is not logged on or computer information is not available.
OK	Click <b>OK</b> to save your changes.
Cancel	Click <b>Cancel</b> to leave this screen without saving any changes you may have made.

### Authentication Properties

Select an EAP authentication type in the **Wireless (network) properties: Authentication** screen and click the **Properties** button to display the following screen.

### Protected EAP Properties

**Figure 48** Windows XP: Protected EAP Properties



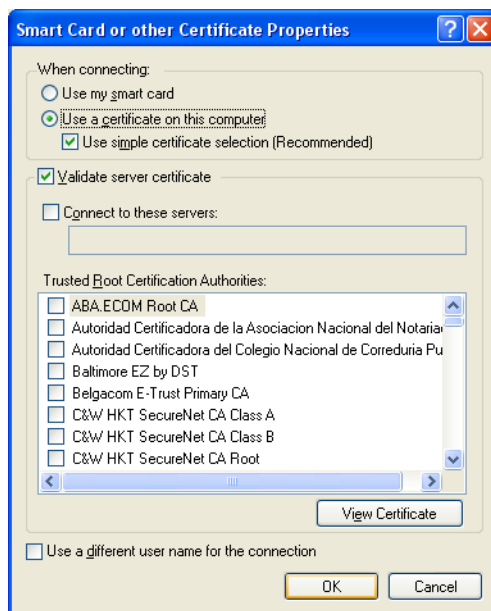
The following table describes the labels in this screen.

**Table 25** Windows XP: Protected EAP Properties

LABEL	DESCRIPTION
Validate server certificate	Select the check box to verify the certificate of the authentication server.
Connect to these servers	Select the check box and specify a domain in the field below to have your computer connect to a server which resides only within this domain.
Trusted Root Certification Authorities:	Select a trusted certification authority from the list below.  <b>Note:</b> You must first have a wired connection to a network and obtain the certificate(s) from a certificate authority (CA). Consult your network administrator for more information.
Do not prompt user to authorize new server or trusted certification authorities.	Select this check box to verify a new authentication server or trusted CA without prompting. This field is available only if you installed the Windows XP server pack 2.
Select Authentication Method:	Select an authentication method from the drop-down list box and click <b>Configure</b> to do settings.
Enable Fast Reconnect	Select the check box to automatically reconnect to the network (without re-authentication) if the wireless connection goes down.
OK	Click <b>OK</b> to save your changes.
Cancel	Click <b>Cancel</b> to leave this screen without saving any changes you may have made.

### Smart Card or other Certificate Properties

**Figure 49** Windows XP: Smart Card or other Certificate Properties





The following table describes the labels in this screen.

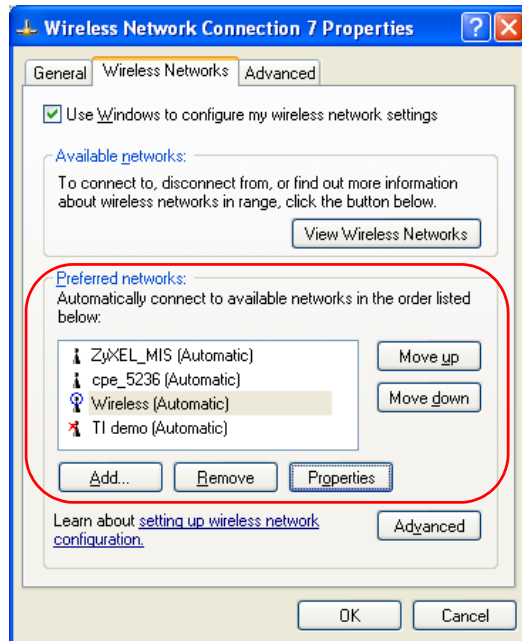
**Table 26** Windows XP: Smart Card or other Certificate Properties

LABEL	DESCRIPTION
Use my smart card	Select this check box to use the smart card for authentication.
Use a certificate on this computer	Select this check box to use a certificate on your computer for authentication.
Validate server certificate	Select the check box to check the certificate of the authentication server.
Connect to these servers	Select the check box and specify a domain in the field below to have your computer connect to a server which resides only within this domain.
Trusted Root Certification Authorities:	Select a trusted certification authority from the list below. <b>Note:</b> You must first have a wired connection to a network and obtain the certificate(s) from a certificate authority (CA). Consult your network administrator for more information.
View Certificate	Click this button if you want to verify the selected certificate.
Use a different user name for the connection:	Select the check box to use a different user name when the user name in the smart card or certificate is not the same as the user name in the domain that you are logged on to.
OK	Click <b>OK</b> to save your changes.
Cancel	Click <b>Cancel</b> to leave this screen without saving any changes you may have made.

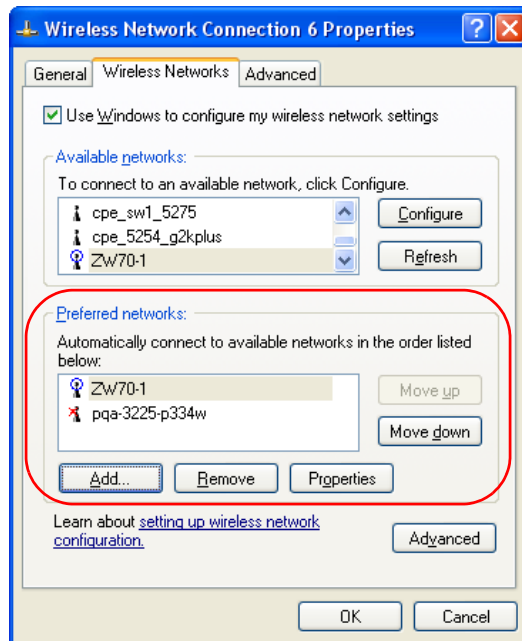
## Ordering the Preferred Networks

Follow the steps below to manage your preferred networks.

- 1 Windows XP SP2: Click **Change the order of preferred networks** in the **Wireless Network Connection** screen (see [Figure 42 on page 66](#)). The screen displays as shown.

**Figure 50** Windows XP SP2: Wireless Networks: Preferred Networks

Windows XP SP1: In the **Wireless Network Connection Status** screen, click **Properties** and the **Wireless Networks** tab to open the screen as shown.

**Figure 51** Windows XP SP1: Wireless Networks: Preferred Networks

- 2 Whenever the ZyXEL wireless LAN adapter tries to connect to a new network, the new network is added in the **Preferred networks** table automatically. Select a network and click **Move up** or **Move down** to change its order, click **Remove** to delete it or click **Properties** to view the security, authentication or connection information of the selected network. Click **Add** to add a preferred network into the list manually.



# Appendix D

## Types of EAP Authentication

This appendix discusses some popular authentication types: EAP-MD5, EAP-TLS, EAP-TTLS, PEAP and LEAP.

The type of authentication you use depends on the RADIUS server or the AP. Consult your network administrator for more information. Your wireless LAN device may not support all authentication types.

### EAP-MD5 (Message-Digest Algorithm 5)

MD5 authentication is the simplest one-way authentication method. The authentication server sends a challenge to the wireless station. The wireless station 'proves' that it knows the password by encrypting the password with the challenge and sends back the information. Password is not sent in plain text.

However, MD5 authentication has some weaknesses. Since the authentication server needs to get the plaintext passwords, the passwords must be stored. Thus someone other than the authentication server may access the password file. In addition, it is possible to impersonate an authentication server as MD5 authentication method does not perform mutual authentication. Finally, MD5 authentication method does not support data encryption with dynamic session key. You must configure WEP encryption keys for data encryption.

### EAP-TLS (Transport Layer Security)

With EAP-TLS, digital certifications are needed by both the server and the wireless stations for mutual authentication. The server presents a certificate to the client. After validating the identity of the server, the client sends a different certificate to the server. The exchange of certificates is done in the open before a secured tunnel is created. This makes user identity vulnerable to passive attacks. A digital certificate is an electronic ID card that authenticates the sender's identity. However, to implement EAP-TLS, you need a Certificate Authority (CA) to handle certificates, which imposes a management overhead.

### EAP-TTLS (Tunneled Transport Layer Service)

EAP-TTLS is an extension of the EAP-TLS authentication that uses certificates for only the server-side authentications to establish a secure connection. Client authentication is then done by sending username and password through the secure connection, thus client identity is protected. For client authentication, EAP-TTLS supports EAP methods and legacy authentication methods such as PAP, CHAP, MS-CHAP and MS-CHAP v2.

## PEAP (Protected EAP)

Like EAP-TTLS, server-side certificate authentication is used to establish a secure connection, then use simple username and password methods through the secured connection to authenticate the clients, thus hiding client identity. However, PEAP only supports EAP methods, such as EAP-MD5, EAP-MSCHAPv2 and EAP-GTC (EAP-Generic Token Card), for client authentication. EAP-GTC is implemented only by Cisco.

## LEAP

LEAP (Lightweight Extensible Authentication Protocol) is a Cisco implementation of IEEE 802.1x.

## Dynamic WEP Key Exchange

The AP maps a unique key that is generated with the RADIUS server. This key expires when the wireless connection times out, disconnects or reauthentication times out. A new WEP key is generated each time reauthentication is performed.

If this feature is enabled, it is not necessary to configure a default encryption key in the Wireless screen. You may still configure and store keys here, but they will not be used while Dynamic WEP is enabled.

**Note:** EAP-MD5 cannot be used with Dynamic WEP Key Exchange

For added security, certificate-based authentications (EAP-TLS, EAP-TTLS and PEAP) use dynamic keys for data encryption. They are often deployed in corporate environments, but for public deployment, a simple user name and password pair is more practical. The following table is a comparison of the features of authentication types.

**Table 27** Comparison of EAP Authentication Types

	EAP-MD5	EAP-TLS	EAP-TTLS	PEAP	LEAP
Mutual Authentication	No	Yes	Yes	Yes	Yes
Certificate – Client	No	Yes	Optional	Optional	No
Certificate – Server	No	Yes	Yes	Yes	No
Dynamic Key Exchange	No	Yes	Yes	Yes	Yes
Credential Integrity	None	Strong	Strong	Strong	Moderate
Deployment Difficulty	Easy	Hard	Moderate	Moderate	Moderate
Client Identity Protection	No	No	Yes	Yes	No

# WPA

## User Authentication

WPA applies IEEE 802.1x and Extensible Authentication Protocol (EAP) to authenticate wireless stations using an external RADIUS database.

## Encryption

WPA improves data encryption by using Temporal Key Integrity Protocol (TKIP) or Advanced Encryption Standard (AES), Message Integrity Check (MIC) and IEEE 802.1x.

TKIP uses 128-bit keys that are dynamically generated and distributed by the authentication server. It includes a per-packet key mixing function, a Message Integrity Check (MIC) named Michael, an extended initialization vector (IV) with sequencing rules, and a re-keying mechanism.

TKIP regularly changes and rotates the encryption keys so that the same encryption key is never used twice.

The RADIUS server distributes a Pairwise Master Key (PMK) key to the AP that then sets up a key hierarchy and management system, using the PMK to dynamically generate unique data encryption keys to encrypt every data packet that is wirelessly communicated between the AP and the wireless stations. This all happens in the background automatically.

AES (Advanced Encryption Standard) also uses a secret key. This implementation of AES applies a 128-bit key to 128-bit blocks of data.

The Message Integrity Check (MIC) is designed to prevent an attacker from capturing data packets, altering them and resending them. The MIC provides a strong mathematical function in which the receiver and the transmitter each compute and then compare the MIC. If they do not match, it is assumed that the data has been tampered with and the packet is dropped.

By generating unique data encryption keys for every data packet and by creating an integrity checking mechanism (MIC), TKIP makes it much more difficult to decrypt data on a Wi-Fi network than WEP, making it difficult for an intruder to break into the network.

The encryption mechanisms used for WPA and WPA-PSK are the same. The only difference between the two is that WPA-PSK uses a simple common password, instead of user-specific credentials. The common-password approach makes WPA-PSK susceptible to brute-force password-guessing attacks but it's still an improvement over WEP as it employs an easier-to-use, consistent, single, alphanumeric password.

## Security Parameters Summary

Refer to this table to see what other security parameters you should configure for each Authentication Method/ key management protocol type. MAC address filters are not dependent on how you configure these security features.

**Table 28** Wireless Security Relational Matrix

AUTHENTICATION METHOD/ KEY MANAGEMENT PROTOCOL	ENCRYPTION METHOD	ENTER MANUAL KEY	ENABLE IEEE 802.1X
Open	None	No	No
Open	WEP	No	Enable with Dynamic WEP Key
		Yes	Enable without Dynamic WEP Key
		Yes	Disable
Shared	WEP	No	Enable with Dynamic WEP Key
		Yes	Enable without Dynamic WEP Key
		Yes	Disable
WPA	WEP	No	Yes
WPA	TKIP	No	Yes
WPA-PSK	WEP	Yes	Yes
WPA-PSK	TKIP	Yes	Yes

# Index

## Numerics

802.1x [40](#)

## A

About [50](#)

about your ZyXEL G-260 [18](#)

activating a profile [47](#)

Adapter [47](#)

Ad-Hoc [45](#)

advanced settings [47](#)

antenna [18](#)

antenna power output [56](#)

authentication [38](#)

authentication method

open system [28](#)

shared key [28](#)

## C

CA [76](#)

Certificate Authority [76](#)

channel [24](#), [35](#), [36](#), [45](#)

configuration method

important note [19](#)

Odyssey Client Manager [19](#)

Wireless Zero Configuration (WZC) [19](#)

ZyXEL Utility [19](#)

connecting to a WLAN [37](#)

Copyright [2](#)

creating a new profile [43](#)

current configuration [34](#)

current connection status [34](#)

Customer Support [6](#)

## D

data encryption [36](#)

Denmark, Contact Information [6](#)

driver version [50](#)

Dynamic WEP Key Exchange [77](#)

## E

Enabling OTIST [29](#)

Encryption [78](#)

## F

FCC [3](#)

Finland, Contact Information [6](#)

France, Contact Information [6](#)

## G

Germany, Contact Information [6](#)

getting started [18](#)

graphics icons key [17](#)

## H

hardware connections [19](#)

## I

initialization vector (IV) [78](#)

installation

utility [18](#)



## L

link information [34](#)

## M

Message Integrity Check (MIC) [78](#)

## N

network type [34](#)

North America Contact Information [6](#)

Norway, Contact Information [6](#)

## O

Odyssey Client Manager [19](#)

One-Touch Intelligent Security Technology [29](#)

open system authentication [28](#)

OTIST [31](#)

OTIST (One-Touch Intelligent Security) [48](#)

OTIST Introduction [29](#)

## P

Pairwise Master Key (PMK) [78](#)

passphrase [25](#), [38](#)

password phrase [25](#)

Power Saving Mode [48](#)

preamble [48](#)

product specifications [56](#)

profile [34](#), [43](#)

    activation [47](#)

    add new [43](#)

    delete [43](#)

    edit [43](#)

    information [43](#)

## Q

Quick Start Guide [16](#), [19](#)

## R

radio interference [54](#)

real-time data traffic statistics [35](#)

Regular Mail [6](#)

Related Documentation [16](#)

## S

save power [48](#)

Scan Info [44](#)

security [25](#), [56](#)

    data encryption [25](#)

Security Parameters [79](#)

Service [5](#)

Setup Key [29](#)

shared key authentication [28](#)

signal strength [36](#)

site survey [36](#)

    connecting to a WLAN network [37](#)

    scan [36](#)

    security settings [37](#)

sleep mode [48](#)

Spain, Contact Information [6](#)

SSID [34](#), [36](#)

SSID (Service Set Identity) [24](#)

Starting OTIST [31](#)

statistics [35](#)

support CD [16](#)

Support E-mail [6](#)

Sweden, Contact Information [6](#)

syntax conventions [16](#)

## T

Telephone [6](#)

Temporal Key Integrity Protocol (TKIP) [78](#)

transmission rate [34](#), [43](#), [48](#)

transmission rate (Tx Rate) [24](#)

transmit key [38](#)

Trend Chart [35](#)

troubleshooting [54](#)

    link status [54](#)

    network communication [55](#)

    starting ZyXEL Utility [54](#)

## U

uninstalling ZyXEL Utility [50](#)  
upgrading ZyXEL Utility [51](#)  
    important step [51](#)  
User Authentication [78](#)

opening [20](#)  
system tray icon [20](#)  
upgrade [51](#)  
version [50](#)

## V

voltage [56](#)

## W

Web Site [6](#)  
WEP [25](#), [37](#), [38](#)  
    manual setup [25](#), [38](#)  
    passphrase [25](#), [38](#)  
WEP (Wired Equivalent Privacy) [25](#)  
Windows XP [19](#)  
wireless LAN  
    authentication [28](#)  
    channel [24](#)  
    introduction [24](#)  
    security [24](#)  
    SSID [24](#)  
    transmission rate [24](#)  
Wireless LAN (WLAN) [24](#)  
wireless standard [56](#)  
wireless station mode  
    configuration [34](#)  
WLAN  
    Security parameters [79](#)  
Worldwide Contact Information [6](#)  
WPA [39](#)  
WPA2 [39](#)  
WPA2-PSK [40](#)  
WPA-PSK [40](#)  
WZC (Wireless Zero Configuration) [19](#)

## Z

ZyXEL Limited Warranty  
    Note [5](#)  
ZyXEL Utility [19](#)  
    accessing [20](#)  
    help [20](#)