



# Release Notes

***Layer2 Management Switch***  
***ES-2008-SC30***  
***Firmware Version 1.07***  
***Oct.08. 2003***

Oct.13.2003

# Release Notes

## Introduction:

### Layer 2 Managed Switch

The Switches provides 8 switched auto-sensing 10/100 Mbps RJ-45 Ethernet ports (8TP Management Switch) plus one 100Base-FX fiber port (ES-2008-SC30 Management Switch). The Switch will automatically detect the speed of the device that you plug into it to allow you to use both 10 and 100Mbps device. The 10Mbps bandwidth will accommodate 10Mbps workgroup hubs while simultaneously providing the 100Mbps bandwidth needed to accommodate multimedia applications. In addition, each RJ-45 port supports Auto MDI/MDIX function.

The ES-2008-SC30 Management Switch couples with one 100Base-FX fiber port. There are 4 types of fiber connectors available for the convenience of your connectivity on the Switch. These fiber connectors are SC/MT-RJ/VF-45 (multi-mode) and SC (single-mode). However, the fiber port can be used to connect to a remote side up to 2 Kilometers (single-mode) or 15~60 kilometers (SC single-mode) away.

The ES-2008-SC30 Management Switch series are compact desktop size switches, which are ideal solutions for SOHO (Small Office or Home Office) network user. It provides wire-speed, Fast Ethernet switching function that allows high-performance, low-cost connection. The Switches feature a store-and-forward switching and it can auto-learn and store source address on an 8K-entry MAC address table.

## Release Notes

### Hardware Comparison List

N/A

### Firmware Specification:

Status	Version No.	Type	Release Date
Current Version	1.07	Customer	10/08/2003
Previous Version	1.06	Customer	05/09/2003

### Hardware Compatibility

It is recommended that the firmware v1.07 should to install on new board EPCB00420.

### Supported Functionality Comparison List:

Features	New PCB Support
802.1Q - VLAN tagging	YES
Port Base VLAN Support (up to 4096 groups)	YES
Protocol VLAN Support	YES
IEEE 802.1d Spanning Tree protocol	YES
IEEE 802.3ad LACP Support	YES
IEEE 802.1ad Port Trunk Support	YES
GVRP Support	YES
IGMP Snooping	YES
TFTP Backup/restore Configuration	YES
Local Management via TELNET	YES
Static MAC Address	YES
Broadcast Storm Filter	YES
TFTP download & X modem upgrade	YES
SNMP	YES

## Release Notes

Port Mirroring	YES
Port Security	YES
802.1P QOS support	YES

### INSTALLATION AND CONFIGURATION NOTES:

In general, the ES-2008-SC30 will be shipped to you pre-configured with this version of firmware.

If you would like to upgrade an existing ES-2008SC30, please follow the TFTP download instructions that are included with your firmware image upgrade kit.

### Firmware upgrade (TFTP)

Use the "TFTP Update Firmware" page to upgrade the firmware (software programmed on a PROM) to the most up to date version.

#### TFTP Download New Image

<b>TFTP Server IP Address</b>	<input type="text" value="192.168.1.238"/>
<b>Firmware File Name</b>	<input type="text" value="image.bin"/>

To upgrade the firmware of procedure

1. Execute TFTP of software and select firmware of path.
2. Enter TFTP Server IP address.
3. Enter firmware of name "image.bin".

Click the Apply button to begin the upgrade process. After the upgrade is complete, remember to reset the device.

#### **Note:**

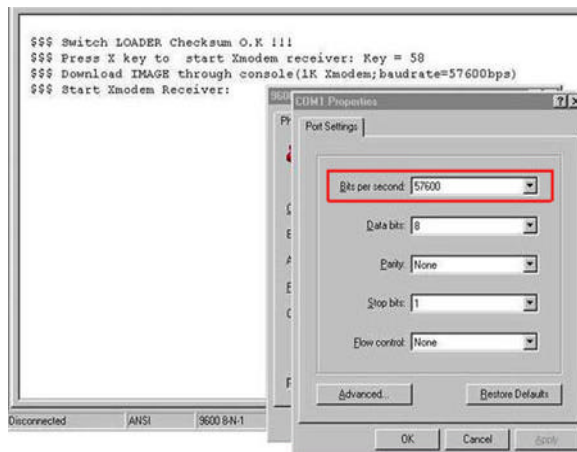
If the upgrade has failed, will use X modem upgrade.

## Release Notes

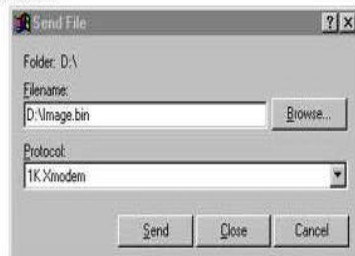
### Firmware upgrade (X modem)

Use the RSR-232 cable to upgrade the firmware (software programmed on a PROM) to the most up to date version.

```
$$$ Switch LOADER Checksum O.K !!!  
$$$ Press X key to start Xmodem receiver:  
$$$ Download IMAGE through console(1K Xmodem;baudrate=57600bps)  
$$$ Start Xmodem Receiver:
```



```
$$$ Switch LOADER Checksum O.K !!!  
$$$ Press X key to start Xmodem receiver: Key = 58  
$$$ Download IMAGE through console(1K Xmodem;baudrate=57600bps)  
$$$ Start Xmodem Receiver:
```



```
$$$ Switch LOADER Checksum O.K !!!  
$$$ Press X key to start Xmodem receiver: Key = 78  
$$$ Download IMAGE through console(1K Xmodem;baudrate=57600bps)  
$$$ Start Xmodem Receiver: CCCCC  
$$$ Download IMAGE ....O.K !!!  
$$$ Update firmware .....  
.....  
.....  
.....  
$$$ Update firmware ....O.K !!!  
$$$ Note: console baudrate of new image is 9600bps..  
$$$ Reboot .....
```

To upgrade the firmware of procedure

1. Press X key to start upgrading for X modem.
2. First, disconnect terminal and modify baud rate to 57600bps, then do the

## Release Notes

connection again

3. Select “send file” under “transfer” menu from menu bar.
4. Pressing “browse” button
5. Select “1K Xmodem” of protocol and press “Send button”.
6. After successfully upgraded the new firmware, please modify baud rate to 9600bps.

### FIRMWARE CHANGES AND ENHANCEMENTS:

#### MODIFICATIONS:

The following Known Issues have been fixed in this release of firmware.

1. Modify default MAC address.
2. Modify menu icon. Change the wrong word.

### KNOWN RESTRICTIONS AND LIMITATIONS:

1. Trunk and STP can't work at the same time.

## Release Notes

### COMPLIANCE SUPPORT:

Compliance Level	Compliant
Year 2000	YES*

Known Anomalies: **N/A**

### IEEE STANDARDS SUPPORT:

Standard	Title
IEEE 802.1d	Transparent Bridging Specifications (ISO/IEC 10038)
IEEE 802.1p	Traffic Class Expediting and Dynamic Multicast Filtering
IEEE 802.1Q	Virtual Bridged Local Area Networks
IEEE 802.2	Local Area Networks, Logical Link Control (LLC)
IEEE 802.3	CSMA/CD 9 (ISO/IEC 8802-3)
IEEE 802.3 i	10Base-T (ISO/IEC 8802-3, clause 14)
IEEE 802.3 u	100Base-TX (ISO/IEC 8802-3, clause 25)
IEEE 802.3 u	100Base-FX (ISO/IEC 8802-3, clause 26)
IEEE 802.3 x	Flow Control

### IETF STANDARDS MIB SUPPORT:

RFC No.	Title	Groups Supported
1157	Simple Network Management Protocol (SNMP)	
1213	MIB-II	System, Interfaces, IP, ICMP, UDP, Transmission, SNMP
1493	Bridge MIB	Spanning tree
1757	Remote Network Monitoring MIB	Ethernet statistics, Ethernet history, Alarm, Event

## Release Notes

### PRIVATE ENTERPRISE MIB SUPPORT:

Title	Version No.
ES-2008SC30.MIB	V1.00

### SNMP TRAP SUPPORT:

RFC No.	Title
RFC 1215	Cold Start trap Warm Start trap Link down/up trap

### PRIVATE ENTERPRISE TRAP SUPPORT:

N/A

### GLOBAL SUPPORT:

For information regarding the latest firmware available, recent release note revisions, or you require additional assistance requirement, please visit the ZyXEL web site.